

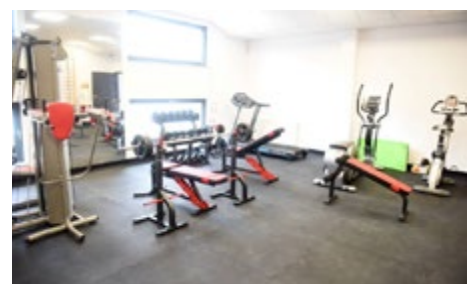
# LOW-VOLTAGE CURRENT TRANSFORMERS ▷



## ▷ LUMEL 4.0 - PLANT OF NEW TECHNOLOGIES



- ▷ OUR NEW PLANT BUILT IN 2020 POWERED BY A 125 kW LUMEL PHOTOVOLTAIC SYSTEM.  
LUMEL S.A. - PLANT AREA - 3639 m<sup>2</sup>.



- ▷ LUMEL ARENA  
(SPORTS AND RECREATION FACILITY FOR EMPLOYEES AND THEIR FAMILIES) - AREA - 1007 m<sup>2</sup>.



# EXPERIENCE THE ELECTRONIC WORLD OF LUMEL



RESEARCH LABORATORY  
БЕЗЕВНИЧ ГАРОВАТОРА



R&D  
Б&Д



SMT ASSEMBLY  
СМТ АСМБЛИ



QUALITY INSPECTION  
КОНТРОЛНА ИНСПЕКЦИЈА



THT ASSEMBLY  
ТНТ АСМБЛИ



WAREHOUSE  
СКОПИШТИЩЕ

CUSTOMER SERVICE  
КЛИЕНТОВЕВ СЕРВИС



99 DON'T FIND FAULT,  
**FIND A REMEDY.**  
ANYBODY CAN COMPLAIN.™

# CONTACT US

## AUTOMATION:

EXPORT DEPARTMENT - OFFICE POLAND:  
☎ + 48 68 45 75 130 or + 48 693 290 962  
✉ [export@lumel.com.pl](mailto:export@lumel.com.pl)

DACH / NL / BE SALES MANAGER  
☎ +49 152 0947 1770

LATIN / FR / IT SALES MANAGER  
☎ + 34 683 60 63 53

BALCAN / CZ / SK SALES MANAGER  
☎ +36 20 9343 785

AP SALES MANAGER  
☎ +886 935 276522

MEA / AFR / TR SALES MANAGER  
☎ +971 52 465 2511

CY / GR / NORTH SALES MANAGER  
☎ +357 99790671

INDIA SALES MANAGER  
+91 7755907813

## CUSTOMER SERVICE:

☎ + 48 68 45 75 151  
☎ + 48 68 45 75 152  
☎ + 48 68 45 75 153  
☎ + 48 68 45 75 154

## EMS | ODM | OEM SERVICES:

☎ + 48 693 290 405 or + 48 68 45 75 144  
✉ [ems@lumel.com.pl](mailto:ems@lumel.com.pl)

## RESEARCH LABORATORY:

☎ + 48 68 45 75 161  
✉ [laboratorium@lumel.com.pl](mailto:laboratorium@lumel.com.pl)

## PROTECTION RELAYS | CZIP:

☎ + 48 508 468 520  
✉ [czip@lumel.com.pl](mailto:czip@lumel.com.pl)

**3** YEAR  
WARRANTY ▷



PRODUCT CODE  
CONFIGURATOR  
at [www.lumel.com.pl](http://www.lumel.com.pl) ▷

**ePLAN** ▷

|   | PAGE |
|---|------|
| Current transformers summary.....                     | 6    |
| General overview of current transformers.....         | 8    |
| Instrument security factor.....                       | 10   |
| LCTM - wound primary series.....                      | 16   |
| LCTR - round conductor series.....                    | 17   |
| LCTB 45 - busbar series.....                          | 19   |
| LCTB 50 - busbar series.....                          | 20   |
| LCTB 62 - busbar series.....                          | 22   |
| LCTB 74 - busbar series.....                          | 24   |
| LCTB 86 - busbar series.....                          | 26   |
| LCTB 100 - busbar series.....                         | 28   |
| LCTB 104 - busbar series.....                         | 29   |
| LCTB 140 - busbar series.....                         | 30   |
| LCTB 225 - busbar series.....                         | 32   |
| LCTS - split core - <b>NEW</b> - COMPACT VERSION..... | 34   |
| LCTP - 3-phase current transformers.....              | 36   |
| LRC - resin cast current transformers.....            | 38   |
| LU01 - summation current transformers.....            | 42   |
| LW - round current transformers.....                  | 45   |
| LE - round current transformers.....                  | 48   |
| Accessories.....                                      | 50   |

3  
YEAR  
WARRANTY

ePLAN

# CURRENT TRANSFORMERS SUMMARY

| Hole diameter/<br>Busbar<br>dimensions   | Transformer type  | Page no. | Range of primary currents |        |           |        |            |        |           |        |         |        |
|--|-------------------|----------|---------------------------|--------|-----------|--------|------------|--------|-----------|--------|---------|--------|
|  |                   |          | Class 0.25                |        | Class 0.2 |        | Class 0.55 |        | Class 0.5 |        | Class 1 |        |
|  |                   |          | min                       | max    | min       | max    | min        | max    | min       | max    | min     | max    |
| <b>Wound primary series</b>  |                   |          |                           |        |           |        |            |        |           |        |         |        |
| N/A  | LCTM 62/W(40)     | 14       | -                         | -      | 1 A       | 30 A   | -          | -      | 1 A       | 30 A   | 1 A     | 30 A   |
| N/A  | LCTM 74/W(40)     | 14       | -                         | -      | 1 A       | 60 A   | -          | -      | 1 A       | 60 A   | 1 A     | 60 A   |
| <b>Current transformers with window for round conductor or busbar</b>          |                   |          |                           |        |           |        |            |        |           |        |         |        |
| Ø 14   | LCTR 45/14(40)    | 15       | -                         | -      | -         | -      | -          | -      | 80 A      | 300 A  | 30 A    | 300 A  |
| Ø 14   | LCTR 50/14(30)    | 15       | -                         | -      | -         | -      | -          | -      | 100 A     | 300 A  | 40 A    | 300 A  |
| Ø 14   | LCTR 50/14(50)    | 15       | -                         | -      | -         | -      | -          | -      | 50 A      | 300 A  | 30 A    | 300 A  |
| Ø 22   | LCTR 62/R(40)     | 15       | -                         | -      | 100 A     | 600 A  | -          | -      | 75 A      | 600 A  | 50 A    | 600 A  |
| Ø 20 / 20 x 10   | LCTB 45/21(40)    | 17       | -                         | -      | -         | -      | -          | -      | 80 A      | 400 A  | 50 A    | 400 A  |
| Ø 21 / 20 x 10   | LCTB 50/21(30)    | 18       | -                         | -      | -         | -      | -          | -      | 80 A      | 400 A  | 50 A    | 400 A  |
| Ø 26 / 30 x 10   | LCTB 50/30(30)    | 18       | -                         | -      | -         | -      | -          | -      | 100 A     | 600 A  | 75 A    | 600 A  |
| Ø 21 / 20 x 10   | LCTB 50/21(50)    | 18       | -                         | -      | -         | -      | -          | -      | 50 A      | 400 A  | 50 A    | 400 A  |
| Ø 26 / 30 x 10   | LCTB 50/30(50)    | 18       | -                         | -      | -         | -      | -          | -      | 100 A     | 600 A  | 50 A    | 600 A  |
| 20 x 12  | LCTB 62/20(40)    | 20       | 100 A                     | 400 A  | 100 A     | 400 A  | 100 A      | 400 A  | 75 A      | 400 A  | 50 A    | 400 A  |
| Ø 30 / 30 x 10   | LCTB 62/30(40)    | 20       | 100 A                     | 800 A  | 100 A     | 800 A  | 100 A      | 800 A  | 100 A     | 800 A  | 50 A    | 800 A  |
| Ø 28 / 30 x 10   | LCTB 62/30(50)    | 20       | 100 A                     | 800 A  | 100 A     | 800 A  | 100 A      | 800 A  | 75 A      | 800 A  | 50 A    | 800 A  |
| Ø 31 / 40 x 10   | LCTB 62/40(40)    | 20       | 200 A                     | 800 A  | 200 A     | 800 A  | 200 A      | 800 A  | 200 A     | 800 A  | 100 A   | 800 A  |
| Ø 20 / 20 x 10   | LCTB 74/20(45)    | 22       | 100 A                     | 400 A  | 100 A     | 400 A  | 100 A      | 400 A  | 75 A      | 400 A  | 40 A    | 400 A  |
| Ø 26 / 30 x 15   | LCTB 74/30(45)    | 22       | 100 A                     | 800 A  | 100 A     | 800 A  | 100 A      | 800 A  | 75 A      | 800 A  | 40 A    | 800 A  |
| Ø 35 / 40 x 12   | LCTB 74/40(45)    | 22       | 200 A                     | 1000 A | 200 A     | 1000 A | 200 A      | 1000 A | 100 A     | 1000 A | 40 A    | 1000 A |
| Ø 41 / 50 x 12   | LCTB 74/50(45)    | 22       | 250 A                     | 1000 A | 250 A     | 1000 A | 250 A      | 1000 A | 200 A     | 1000 A | 100 A   | 1000 A |
| Ø 36 / 40 x 10   | LCTB 86/40(45)    | 24       | 100 A                     | 1000 A | 100 A     | 1000 A | 100 A      | 1000 A | 100 A     | 1000 A | 50 A    | 1000 A |
| Ø 46 / 50 x 12   | LCTB 86/50(45)    | 24       | 300 A                     | 1250 A | 300 A     | 1250 A | 300 A      | 1250 A | 120 A     | 1250 A | 100 A   | 1250 A |
| Ø 51 / 60 x 12   | LCTB 86/60(45)    | 24       | 300 A                     | 1600 A | 300 A     | 1600 A | 300 A      | 1600 A | 200 A     | 1600 A | 100 A   | 1600 A |
| Ø 54 / 60 x 12   | LCTB 104/60(45)   | 26       | 300 A                     | 1600 A | 250 A     | 1600 A | 300 A      | 1600 A | 150 A     | 1600 A | 100 A   | 1600 A |
| Ø 65 / 80 x 12   | LCTB 104/80(45)   | 26       | 750 A                     | 2000 A | 400 A     | 2000 A | 750 A      | 2000 A | 250 A     | 2000 A | 200 A   | 2000 A |
| Ø 72 / 80 x 30   | LCTB 140/80(45)   | 27       | 500 A                     | 2000 A | 300 A     | 2000 A | 500 A      | 2000 A | 200 A     | 2000 A | 200 A   | 2000 A |
| Ø 86 / 100 x 30  | LCTB 140/100H(45) | 27       | 600 A                     | 4000 A | 400 A     | 4000 A | 600 A      | 4000 A | 200 A     | 4000 A | 200 A   | 4000 A |
| 124 x 93   | LCTB 225/125(50)  | 29       | 1000 A                    | 6000 A | 600 A     | 6000 A | 1000 A     | 6000 A | 600 A     | 6000 A | 600 A   | 6000 A |
| 166 x 65   | LCTB 225/167(50)  | 29       | 1500 A                    | 7500 A | 1000 A    | 7500 A | 1500 A     | 7500 A | 1000 A    | 7500 A | 1000 A  | 7500 A |
| <b>Current transformers with vertical window for busbar or round conductor</b> |                   |          |                           |        |           |        |            |        |           |        |         |        |
| 41 x 103   | LCTB 100/100V(45) | 25       | 1200 A                    | 2500 A | 1000 A    | 2500 A | 1200 A     | 2500 A | 400 A     | 2500 A | 400 A   | 2500 A |
| 38 x 128   | LCTB 100/130V(45) | 25       | NA                        | NA     | 1500 A    | 3000 A | NA         | NA     | 400 A     | 3000 A | 400 A   | 3000 A |
| Ø 86 / 100 x 30  | LCTB 140/100V(45) | 27       | 600 A                     | 3000 A | 400 A     | 3000 A | 600 A      | 3000 A | 200 A     | 3000 A | 200 A   | 3000 A |
| 70 x 130   | LCTB 140/130V(45) | 27       | NA                        | NA     | 1000 A    | 5000 A | NA         | NA     | 400 A     | 5000 A | 400 A   | 5000 A |
| <b>Split core series</b>   |                   |          |                           |        |           |        |            |        |           |        |         |        |
| 23 x 33  | LCTS 93/30SC(40)  | 30       | NA                        | NA     | NA        | NA     | NA         | NA     | 300 A     | 400 A  | 100 A   | 400 A  |
| 85 x 54  | LCTS 125/50SC(40) | 30       | NA                        | NA     | NA        | NA     | NA         | NA     | 250 A     | 1000 A | 250 A   | 1000 A |
| 85 x 125   | LCTS 155/80SC(40) | 30       | NA                        | NA     | NA        | NA     | NA         | NA     | 250 A     | 3000 A | 250 A   | 3000 A |
| 82 x 162   | LCTS 195/80SC(64) | 30       | NA                        | NA     | NA        | NA     | NA         | NA     | 500 A     | 5000 A | 500 A   | 5000 A |
| Ø 18,5   | LCTS 50/18SC      | 32       | -                         | -      | -         | -      | -          | -      | -         | -      | 150 A   | 250 A  |
| Ø 32,5   | LCTS 50/32SC      | 32       | -                         | -      | -         | -      | -          | -      | -         | -      | 250 A   | 500 A  |
| <b>3-phase current transformers</b>  |                   |          |                           |        |           |        |            |        |           |        |         |        |
| 20 x 10  | LCTP 75/ 15 (60)  | 31       | NA                        | NA     | NA        | NA     | NA         | NA     | 150 A     | 160 A  | 100 A   | 160 A  |
| 20 x 10  | LCTP 105/ 21 (40) | 31       | NA                        | NA     | NA        | NA     | NA         | NA     | 160 A     | 250 A  | 100 A   | 250 A  |
| 30 x 15  | LCTP 140/ 31 (40) | 31       | NA                        | NA     | NA        | NA     | NA         | NA     | 250 A     | 630 A  | 250 A   | 630 A  |
| N/A  | LCTP 185/ 27 (45) | 32       | NA                        | NA     | NA        | NA     | NA         | NA     | NA        | NA     | 100 A   | 500 A  |
| N/A  | LCTP 185/ 37 (45) | 32       | NA                        | NA     | NA        | NA     | NA         | NA     | NA        | NA     | 300 A   | 800 A  |

3 YEAR WARRANTY

ePLAN

# CURRENT TRANSFORMERS SUMMARY

| Hole diameter/<br>Busbar<br>dimensions | Transformer type  | Page no. | Range of primary currents |     |           |        |            |        |           |        |         |        |         |      |   |
|--|-------------------|----------|---------------------------|-----|-----------|--------|------------|--------|-----------|--------|---------|--------|---------|------|---|
|  |                   |          | Class 0.25                |     | Class 0.2 |        | Class 0.5S |        | Class 0.5 |        | Class 1 |        | Class 5 |      |   |
|  |                   |          | min                       | max | min       | max    | min        | max    | min       | max    | min     | max    | min     | max  |   |
| <b>Resin cast current transformers</b> |                   |          |                           |     |           |        |            |        |           |        |         |        |         |      |   |
| Ø 30                                   | LRC1 80/30 (50)   | 33       | -                         | -   | -         | -      | -          | -      | -         | 75 A   | 160 A   | 60 A   | 160 A   | -    | - |
| Ø 50                                   | LRC2 90/50 (40)   | 33       | -                         | -   | -         | -      | -          | -      | -         | 200 A  | 320 A   | 200 A  | 320 A   | -    | - |
| Ø 72                                   | LRC3 110/72 (40)  | 34       | -                         | -   | -         | -      | -          | -      | -         | 400 A  | 630 A   | 400 A  | 630 A   | -    | - |
| Ø 85                                   | LRC4 135/85 (40)  | 34       | -                         | -   | -         | -      | -          | -      | -         | 800 A  | 1250 A  | 800 A  | 1250 A  | -    | - |
| Ø 115                                  | LRC5 165/115 (40) | 35       | -                         | -   | -         | -      | -          | -      | -         | 1500 A | 2000 A  | 1500 A | 2000 A  | -    | - |
| Ø 130                                  | LRC6 195/130 (40) | 35       | -                         | -   | -         | -      | -          | -      | -         | 2500 A | 3200 A  | 2500 A | 3200 A  | -    | - |
| Ø 165                                  | LRC7 230/165 (40) | 36       | -                         | -   | -         | -      | -          | -      | -         | 3000 A | 3200 A  | 3000 A | 3200 A  | -    | - |
| Ø 200                                  | LRC8 295/200 (40) | 36       | -                         | -   | -         | -      | -          | -      | -         | 4000 A | 5000 A  | 4000 A | 5000 A  | -    | - |
| <b>Round current transformers</b>      |                   |          |                           |     |           |        |            |        |           |        |         |        |         |      |   |
| Ø 30                                   | LW01              | 41       | -                         | -   | -         | -      | -          | -      | -         | 100 A  | 200 A   | 50 A   | 200 A   | -    | - |
| Ø 30                                   | LW02              | 41       | -                         | -   | 200 A     | 200 A  | 150 A      | 200 A  | 75 A      | 200 A  | 50 A    | 200 A  | -       | -    |   |
| Ø 43                                   | LW03              | 42       | -                         | -   | 200 A     | 300 A  | 200 A      | 300 A  | 100 A     | 300 A  | 75 A    | 300 A  | -       | -    |   |
| Ø 58                                   | LW04              | 42       | -                         | -   | 400 A     | 600 A  | 200 A      | 600 A  | 150 A     | 600 A  | 120 A   | 600 A  | -       | -    |   |
| Ø 72                                   | LW05              | 43       | -                         | -   | 400 A     | 1000 A | 400 A      | 1000 A | 250 A     | 1000 A | 200 A   | 1000 A | -       | -    |   |
| Ø 113                                  | LW06              | 43       | -                         | -   | 600 A     | 3200 A | 600 A      | 3200 A | 600 A     | 3200 A | 600 A   | 3200 A | -       | -    |   |
| Ø 30                                   | LE 73/30 (50)     | 44       | -                         | -   | -         | -      | -          | -      | -         | -      | 100 A   | 200 A  | 50 A    | 75 A |   |
| Ø 43                                   | LE 92/43 (41)     | 44       | -                         | -   | -         | -      | -          | -      | -         | -      | 200 A   | 400 A  | -       | -    |   |
| Ø 50                                   | LE 95/50 (40)     | 44       | -                         | -   | -         | -      | -          | -      | -         | -      | 200 A   | 300 A  | -       | -    |   |
| Ø 58                                   | LE 100/58 (41)    | 44       | -                         | -   | -         | -      | -          | -      | -         | -      | 400 A   | 600 A  | -       | -    |   |
| Ø 72                                   | LE 110/72 (41)    | 45       | -                         | -   | -         | -      | -          | -      | -         | -      | 800 A   | 1000 A | -       | -    |   |
| Ø 85                                   | LE 135/85 (30)    | 45       | -                         | -   | -         | -      | -          | -      | -         | -      | 800 A   | 1200 A | -       | -    |   |
| Ø 113                                  | LE 159/113 (40)   | 45       | -                         | -   | -         | -      | -          | -      | -         | -      | 1200 A  | 2000 A | -       | -    |   |
| Ø 130                                  | LE 165/130 (30)   | 45       | -                         | -   | -         | -      | -          | -      | -         | -      | 2400 A  | 3000 A | -       | -    |   |

**3** YEAR WARRANTY

**ePLAN**



# GENERAL OVERVIEW OF CURRENT TRANSFORMERS

**CURRENT TRANSFORMER** is used for measurement of electric alternating currents. When current in a circuit (primary current) is too high to directly apply to measuring instruments, a current transformer produces a reduced current (secondary current) accurately proportional to the current in the circuit, which can be conveniently connected to measuring and recording instruments. A current transformer also isolates the measuring instruments from what may be very high voltage in the monitored circuit. Relationship between primary and secondary currents is called **rated transformation ratio**.



$$I_1 = I_2 \cdot \frac{N_2}{N_1}$$

where:  $I_1$  - primary current,  $I_2$  - secondary current,  $N_1$  - number of turns of primary winding,  $N_2$  - number of turns of secondary winding,  $N_2/N_1$  - rated transformation ratio  
Current transformers are used mainly in such a way that the cable from the measured shock or bus current passes through the main hole transformer, which is equivalent to one coil primary winding. In this case, the above equation simplifies to:

$$I_1 = I_2 \cdot N_2$$

The task is to reduce the transformer output current for currents of over 120% of measurement range, to protect against destruction of measuring devices connected to the transformer in case of surges or failures in the primary circuit.

## FEATURES:

- Wide range of accuracy classes: 0.2S, 0.2, 0.5S, 0.5, 1; 3
- Wide range of supported primary currents, the dimensions of rails, the length of casing and hole diameters.
- Multiple mounting methods, including wall mounting, DIN rail 35mm, the conductor, a current bar.
- Shields designed to seal connections.

## GENERAL SPECIFICATION

|   |   |
|---|---|
| <b>Applicable standard:</b>                                     | IEC 61869-1/2   |
| <b>Case:</b>  | 10% glass filled polycarbonate, flame retardant grades classified UL 94V-0 or housing made of epoxy resin (LRC series only)                 |
| <b>Connection:</b>  | Two connection on each side. M4 screws with self lifting clamp strap.   |
| <b>Insulation class</b>   | E (120°C max)   |
| <b>Maximum system voltage:</b>                                  | 0.72 kV   |
| <b>Test voltage:</b>  | 4kV, 1 min, 50Hz<br>3kV, 1 min, 50Hz (for LCTB 50/xx(30), LCTB 50xx(50))  |
| <b>Operating frequency:</b>                                     | 50/60 Hz  |
| <b>Rated primary rating:</b>                                    | 1 A...7500 A  |
| <b>Rated secondary output:</b>                                  | 5 A or 1 A  |
| <b>Rated burden:</b>  | 1, 1.25, 1.5, 2.5, 3.75, 5, 7.5, 10, 12.5, 15, 20, 30, 45, 60, 100 VA   |
| <b>Accuracy class:</b>  | 0.2, 0.2S, 0.5S – for laboratory and power measurement<br>0.5 – for accurate measuring<br>1; 3 – for general measurement, for analog meters |
| <b>Ambient temperature:</b>                                     | -25°C...+40°C   |
| <b>Operating temperature:</b>                                   | -10°C...+55°C   |
| <b>Storage temperature:</b>                                     | -50°C...+80°C   |
| <b>Rated continuous thermal current (<math>I_{cth}</math>):</b> | 1,2 x $I_n$   |
| <b>Thermal short circuit current (<math>I_{tth}</math>):</b>    | 40 x $I_n$ for wound type<br>60 x $I_n$ for bus bar type  |
| <b>Dynamic short circuit current (<math>I_{dyn}</math>):</b>    | 2.5x $I_{tth}$  |
| <b>Instrument security factor (FS):</b>                         | 2.5, 5, 10  |

## FEATURES:

**720 V** **Class**  
0.2S 0.2  
0.5S 0.5  
1 3

## OUTPUTS:

**5 A** **1 A**

## DEMAND FOR POWER MEASURING DEVICES:

CT users expect these devices fulfill two basic conditions:

- a high degree of accuracy in the nominal current,
- security functions with overloads.

In order to fulfill these stipulations it is necessary for the power of a current transformer offered to fully achieve the actual power requirements of the measurement setup. In ascertaining the actual power requirements, consideration is to be made not only of the loss of power of the appliances to be connected up, but also the losses incurred by the instrument leads.

3 YEAR WARRANTY

ePLAN



# GENERAL OVERVIEW OF CURRENT TRANSFORMERS

Power requirements for measuring apparatus and relays:

- Analog moving-iron meters 0.7 – 1.5VA
- Rectifier current meters 0.001 – 0.250 VA
- Multi-range current meters 0.005 – 5.000 VA
- Current recorders 0.300-9.000 VA
- Bimetallic ammeters 2.5 – 3.0 VA
- Power meter 0.2 – 5.0 VA
- Power factor meter 2.0 – 6.0 VA
- Meters 0.4 – 1.0 VA
- Relays 0.2 – 6.0 VA
- Power transducers 0.5 VA
- Energy meters 2.5 VA

Internal losses of copper wiring:

$$P = \frac{I^2 \times 2 L}{q_{Cu} \times 56} \text{ [VA]}$$

Where:  
 I – Secondary nominal current,  
 L – Distance in [m],  
 q<sub>CU</sub> – wire cross-section in [mm<sup>2</sup>].

CONNECTION DIAGRAMM OF CURRENT TRANSFORMERS

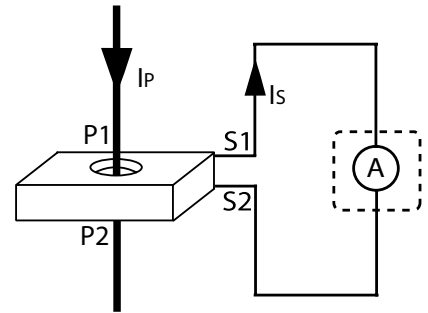


Table for values appertaining to 5 A

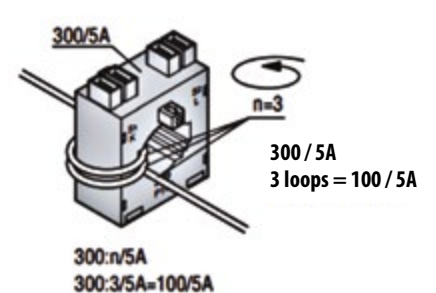
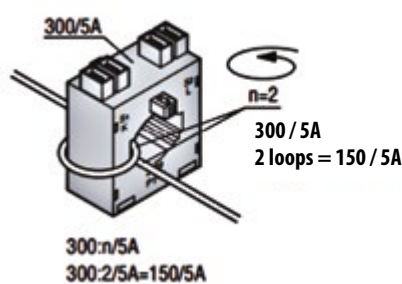
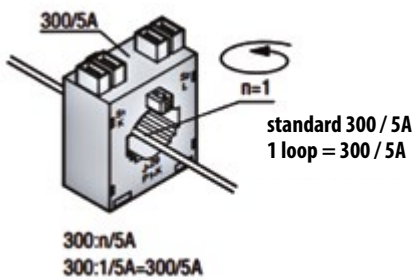
| q <sub>cu</sub>      | 1 m  | 2 m  | 3 m  | 4 m  | 5 m  | 6 m  | 7 m  | 8 m  | 9 m  | 10 m |
|----------------------|------|------|------|------|------|------|------|------|------|------|
| 2.5 mm <sup>2</sup>  | 0.36 | 0.71 | 1.07 | 1.43 | 1.78 | 2.14 | 2.50 | 2.86 | 3.21 | 3.57 |
| 4.0 mm <sup>2</sup>  | 0.22 | 0.45 | 0.67 | 0.89 | 1.12 | 1.34 | 1.56 | 1.79 | 2.01 | 2.24 |
| 6.0 mm <sup>2</sup>  | 0.15 | 0.30 | 0.45 | 0.60 | 0.74 | 0.89 | 1.04 | 1.19 | 1.34 | 1.49 |
| 10.0 mm <sup>2</sup> | 0.09 | 0.18 | 0.27 | 0.36 | 0.44 | 0.54 | 0.63 | 0.71 | 0.80 | 0.89 |

Table for values appertaining to 1 A

| q <sub>cu</sub>      | 10 m | 20 m | 30 m | 40 m | 50 m | 60 m | 70 m | 80 m | 90 m | 100 m |
|----------------------|------|------|------|------|------|------|------|------|------|-------|
| 1.0 mm <sup>2</sup>  | 0.36 | 0.71 | 1.07 | 1.43 | 1.78 | 2.14 | 2.50 | 2.86 | 3.21 | 3.57  |
| 2.5 mm <sup>2</sup>  | 0.14 | 0.29 | 0.43 | 0.57 | 0.72 | 0.86 | 1.00 | 1.14 | 1.29 | 1.43  |
| 4.0 mm <sup>2</sup>  | 0.09 | 0.18 | 0.27 | 0.36 | 0.45 | 0.54 | 0.63 | 0.71 | 0.80 | 0.89  |
| 6.0 mm <sup>2</sup>  | 0.06 | 0.12 | 0.18 | 0.24 | 0.30 | 0.36 | 0.42 | 0.48 | 0.54 | 0.60  |
| 10.0 mm <sup>2</sup> | 0.04 | 0.07 | 0.11 | 0.14 | 0.18 | 0.21 | 0.25 | 0.29 | 0.32 | 0.36  |

## Reducing the transformer ratio.

An example of measuring currents smaller than the rated current of the transformer.



3 YEAR WARRANTY  
 EPLAN





# INSTRUMENT SECURITY FACTOR



| Transformer type                       |           | LCTB - busbar series |     |                    |     |                 |      |                  |      |                  |   |                    |     |                    |     |                    |      |     |      |     |   |     |     |   |  |
|--|-----------|----------------------|-----|--------------------|-----|-----------------|------|------------------|------|------------------|---|--------------------|-----|--------------------|-----|--------------------|------|-----|------|-----|---|-----|-----|---|--|
|  |           | LCTB 100/100V (45)   |     | LCTB 100/130V (45) |     | LCTB104/60 (45) |      | LCTB 104/80 (45) |      | LCTB 140/80 (45) |   | LCTB 140/100H (45) |     | LCTB 140/100V (45) |     | LCTB 140/130V (45) |      |     |      |     |   |     |     |   |  |
| Class                                  | Range [A] | 0.25                 | 0.2 | 0.55               | 0.5 | 1               | 0.25 | 0.2              | 0.55 | 0.5              | 1 | 0.25               | 0.2 | 0.55               | 0.5 | 1                  | 0.25 | 0.2 | 0.55 | 0.5 | 1 | 0.2 | 0.5 | 1 |  |
| <b>Instrument security factor (F5)</b> |           |                      |     |                    |     |                 |      |                  |      |                  |   |                    |     |                    |     |                    |      |     |      |     |   |     |     |   |  |
| 100                                    |           |                      |     |                    |     |                 |      |                  |      |                  |   |                    |     |                    |     |                    |      |     |      |     |   |     |     |   |  |
| 120                                    |           |                      |     |                    |     | 10              |      |                  |      |                  |   |                    |     |                    |     |                    |      |     |      |     |   |     |     |   |  |
| 125                                    |           |                      |     |                    |     | 10              |      |                  |      |                  |   |                    |     |                    |     |                    |      |     |      |     |   |     |     |   |  |
| 150                                    |           |                      |     |                    | 10  | 5               |      |                  |      |                  |   |                    |     |                    |     |                    |      |     |      |     |   |     |     |   |  |
| 200                                    |           |                      |     |                    | 10  | 5               |      |                  |      |                  | 5 |                    |     |                    |     |                    |      |     |      |     |   |     |     |   |  |
| 250                                    |           |                      |     |                    |     | 5               |      |                  |      | 10               | 5 |                    |     |                    |     |                    |      |     |      |     |   |     |     |   |  |
| 300                                    |           |                      |     |                    |     | 5               |      |                  |      | 10               | 5 |                    |     |                    |     |                    |      |     |      |     |   |     |     |   |  |
| 400                                    |           |                      |     |                    |     | 5               |      |                  |      | 10               | 5 |                    |     |                    |     |                    |      |     |      |     |   |     |     |   |  |
| 500                                    |           |                      | 10  | 5                  |     | 5               |      |                  |      | 10               | 5 |                    |     |                    |     |                    |      |     |      |     |   |     |     |   |  |
| 600                                    |           |                      | 10  | 5                  |     | 5               |      |                  |      | 10               | 5 |                    |     |                    |     |                    |      |     |      |     |   |     |     |   |  |
| 750                                    |           |                      | 10  | 5                  |     | 5               |      |                  |      | 10               | 5 |                    |     |                    |     |                    |      |     |      |     |   |     |     |   |  |
| 800                                    |           |                      | 10  | 5                  |     | 5               |      |                  |      | 10               | 5 |                    |     |                    |     |                    |      |     |      |     |   |     |     |   |  |
| 1000                                   |           |                      | 10  | 5                  |     | 5               |      |                  |      | 10               | 5 |                    |     |                    |     |                    |      |     |      |     |   |     |     |   |  |
| 1200                                   |           | 10                   | 10  | 5                  | 5   | 5               |      |                  |      | 5                | 5 |                    |     |                    |     |                    |      |     |      |     |   |     |     |   |  |
| 1250                                   |           | 10                   | 10  | 5                  | 5   | 5               |      |                  |      | 5                | 5 |                    |     |                    |     |                    |      |     |      |     |   |     |     |   |  |
| 1500                                   |           | 10                   | 10  | 5                  | 5   | 5               |      |                  |      | 5                | 5 |                    |     |                    |     |                    |      |     |      |     |   |     |     |   |  |
| 1600                                   |           | 10                   | 10  | 5                  | 5   | 5               |      |                  |      | 5                | 5 |                    |     |                    |     |                    |      |     |      |     |   |     |     |   |  |
| 2000                                   |           | 10                   | 10  | 5                  | 5   | 5               |      |                  |      | 5                | 5 |                    |     |                    |     |                    |      |     |      |     |   |     |     |   |  |
| 2500                                   |           | 10                   | 10  | 10                 | 5   | 5               |      |                  |      | 5                | 5 |                    |     |                    |     |                    |      |     |      |     |   |     |     |   |  |
| 3000                                   |           |                      |     |                    |     |                 |      |                  |      |                  |   |                    |     |                    |     |                    |      |     |      |     |   |     |     |   |  |
| 4000                                   |           |                      |     |                    |     |                 |      |                  |      |                  |   |                    |     |                    |     |                    |      |     |      |     |   |     |     |   |  |
| 5000                                   |           |                      |     |                    |     |                 |      |                  |      |                  |   |                    |     |                    |     |                    |      |     |      |     |   |     |     |   |  |

# INSTRUMENT SECURITY FACTOR

| Transformer type | LCTB - busbar series            |                   | LCTS - split core series |                    |                    |                    |              |              | LCTP - busbar series |                  | LCTP - round conductor series |                  |                  |
|------------------|---------------------------------|-------------------|--------------------------|--------------------|--------------------|--------------------|--------------|--------------|----------------------|------------------|-------------------------------|------------------|------------------|
|                  | LCTB 225/125 (50)               | LCTB 225/167 (50) | LCTS 93/30SC (40)        | LCTS 125/50SC (40) | LCTS 155/80SC (40) | LCTS 195/80SC (64) | LCTS 50/18SC | LCTS 50/32SC | LCTP 75/15 (60)      | LCTP 105/21 (40) | LCTP 140/31 (40)              | LCTP 185/27 (45) | LCTP 185/37 (45) |
| Class            | 1                               | 0.5               | 1                        | 0.5                | 1                  | 0.5                | 1            | 1            | 1                    | 0.5              | 1                             | 1                | 1                |
| Range [A]        | Instrument security factor (FS) |                   |                          |                    |                    |                    |              |              |                      |                  |                               |                  |                  |
| 60               |                                 |                   | 10                       |                    |                    |                    |              |              |                      |                  |                               | 5                |                  |
| 100              |                                 |                   |                          |                    |                    |                    |              |              |                      |                  |                               | 5                |                  |
| 125              |                                 |                   |                          |                    |                    |                    |              |              |                      |                  | 5                             |                  |                  |
| 150              |                                 |                   | 10                       |                    |                    |                    |              |              |                      |                  | 5                             | 10               |                  |
| 160              |                                 |                   |                          |                    |                    |                    |              |              |                      |                  | 5                             |                  |                  |
| 200              |                                 |                   | 10                       |                    |                    |                    |              |              |                      |                  | 5                             |                  |                  |
| 250              |                                 |                   | 10                       | 10                 | 10                 | 10                 |              |              |                      |                  | 5                             | 5                | 10               |
| 300              |                                 |                   |                          | 10                 | 10                 | 10                 |              |              |                      |                  | 5                             | 5                | 5                |
| 400              |                                 |                   | 10                       | 10                 | 10                 | 10                 |              |              |                      |                  | 5                             | 5                | 5                |
| 500              |                                 |                   |                          | 10                 | 10                 | 10                 |              |              |                      |                  | 5                             | 5                | 5                |
| 600              | 10                              | 10                |                          | 10                 | 10                 | 10                 |              |              |                      |                  | 5                             | 5                | 5                |
| 630              |                                 |                   |                          |                    |                    |                    |              |              |                      |                  | 5                             | 5                | 5                |
| 750              | 10                              | 10                |                          | 10                 | 10                 | 10                 |              |              |                      |                  | 5                             | 5                | 5                |
| 800              | 10                              | 10                |                          | 10                 | 10                 | 10                 |              |              |                      |                  | 5                             | 5                | 5                |
| 1000             | 10                              | 10                |                          | 10                 | 10                 | 10                 |              |              |                      |                  | 5                             | 5                | 5                |
| 1200             | 10                              | 10                |                          | 10                 | 10                 | 10                 |              |              |                      |                  | 5                             | 5                | 5                |
| 1250             | 10                              | 10                |                          | 10                 | 10                 | 10                 |              |              |                      |                  | 5                             | 5                | 5                |
| 1500             | 10                              | 10                |                          | 10                 | 10                 | 10                 |              |              |                      |                  | 5                             | 5                | 5                |
| 1600             | 10                              | 10                |                          | 10                 | 10                 | 10                 |              |              |                      |                  | 5                             | 5                | 5                |
| 2000             | 10                              | 10                |                          | 10                 | 10                 | 10                 |              |              |                      |                  | 5                             | 5                | 5                |
| 2500             | 10                              | 10                |                          | 10                 | 10                 | 10                 |              |              |                      |                  | 5                             | 5                | 5                |
| 3000             | 10                              | 10                |                          | 10                 | 10                 | 10                 |              |              |                      |                  | 5                             | 5                | 5                |
| 3200             |                                 |                   |                          |                    |                    |                    |              |              |                      |                  |                               |                  |                  |
| 4000             | 10                              | 10                |                          | 10                 | 10                 | 10                 |              |              |                      |                  |                               |                  |                  |
| 5000             | 15                              | 15                |                          | 15                 | 15                 | 15                 |              |              |                      |                  |                               |                  |                  |
| 6000             | 15                              | 15                |                          | 15                 | 15                 | 15                 |              |              |                      |                  |                               |                  |                  |
| 7500             |                                 |                   |                          |                    |                    |                    |              |              |                      |                  |                               |                  |                  |

3 YEAR WARRANTY





# INSTRUMENT SECURITY FACTOR

3 YEAR WARRANTY



| Transformer type | LRC - resin cast current transformers |    |                 |   |                  |   |                  |   |                   |   |                   |    |                   |    |                   |    |
|------------------|---------------------------------------|----|-----------------|---|------------------|---|------------------|---|-------------------|---|-------------------|----|-------------------|----|-------------------|----|
|                  | LRC1 80/30 (50)                       |    | LRC2 90/50 (40) |   | LRC3 110/72 (40) |   | LRC4 135/85 (40) |   | LRC5 165/115 (40) |   | LRC6 195/130 (40) |    | LRC7 230/165 (40) |    | LRC8 295/200 (40) |    |
| Class            | 0.5                                   | 1  | 0.5             | 1 | 0.5              | 1 | 0.5              | 1 | 0.5               | 1 | 0.5               | 1  | 0.5               | 1  | 0.5               | 1  |
| Range [A]        |                                       |    |                 |   |                  |   |                  |   |                   |   |                   |    |                   |    |                   |    |
| 60               |                                       | 10 |                 |   |                  |   |                  |   |                   |   |                   |    |                   |    |                   |    |
| 75               |                                       | 10 |                 |   |                  |   |                  |   |                   |   |                   |    |                   |    |                   |    |
| 100              | 10                                    | 5  |                 |   |                  |   |                  |   |                   |   |                   |    |                   |    |                   |    |
| 125              | 10                                    | 5  |                 |   |                  |   |                  |   |                   |   |                   |    |                   |    |                   |    |
| 150              | 10                                    | 5  |                 |   |                  |   |                  |   |                   |   |                   |    |                   |    |                   |    |
| 160              | 10                                    | 5  |                 |   |                  |   |                  |   |                   |   |                   |    |                   |    |                   |    |
| 200              |                                       |    | 5               | 5 |                  |   |                  |   |                   |   |                   |    |                   |    |                   |    |
| 250              |                                       |    | 5               | 5 |                  |   |                  |   |                   |   |                   |    |                   |    |                   |    |
| 300              |                                       |    | 5               | 5 |                  |   |                  |   |                   |   |                   |    |                   |    |                   |    |
| 320              |                                       |    | 5               | 5 |                  |   |                  |   |                   |   |                   |    |                   |    |                   |    |
| 400              |                                       |    |                 |   | 5                | 5 |                  |   |                   |   |                   |    |                   |    |                   |    |
| 500              |                                       |    |                 |   | 5                | 5 |                  |   |                   |   |                   |    |                   |    |                   |    |
| 600              |                                       |    |                 |   | 5                | 5 |                  |   |                   |   |                   |    |                   |    |                   |    |
| 630              |                                       |    |                 |   | 5                | 5 |                  |   |                   |   |                   |    |                   |    |                   |    |
| 750              |                                       |    |                 |   |                  |   |                  |   |                   |   |                   |    |                   |    |                   |    |
| 800              |                                       |    |                 |   |                  |   | 5                | 5 |                   |   |                   |    |                   |    |                   |    |
| 1000             |                                       |    |                 |   |                  |   | 5                | 5 |                   |   |                   |    |                   |    |                   |    |
| 1200             |                                       |    |                 |   |                  |   | 5                | 5 |                   |   |                   |    |                   |    |                   |    |
| 1250             |                                       |    |                 |   |                  |   | 5                | 5 |                   |   |                   |    |                   |    |                   |    |
| 1500             |                                       |    |                 |   |                  |   |                  |   | 5                 | 5 |                   |    |                   |    |                   |    |
| 1600             |                                       |    |                 |   |                  |   |                  |   | 5                 | 5 |                   |    |                   |    |                   |    |
| 2000             |                                       |    |                 |   |                  |   |                  |   | 5                 | 5 |                   |    |                   |    |                   |    |
| 2500             |                                       |    |                 |   |                  |   |                  |   |                   |   | 10                | 10 |                   |    |                   |    |
| 3000             |                                       |    |                 |   |                  |   |                  |   |                   |   | 10                | 10 | 10                | 10 |                   |    |
| 3200             |                                       |    |                 |   |                  |   |                  |   |                   |   | 10                | 10 | 10                | 10 |                   |    |
| 4000             |                                       |    |                 |   |                  |   |                  |   |                   |   |                   |    |                   |    | 15                | 15 |
| 5000             |                                       |    |                 |   |                  |   |                  |   |                   |   |                   |    |                   |    | 15                | 15 |

| Transformer type | LU01 - summation current transformer |                                 |            |    |    |
|------------------|--------------------------------------|---------------------------------|------------|----|----|
|                  | LU01 (75)                            |                                 | LU01 (150) |    |    |
| Class            | 0.5                                  | 1                               | 0.5        | 1  |    |
| Inputs           | Power                                | Instrument security factor (FS) |            |    |    |
| 2 x 5A           | 5 VA                                 | 5                               | 5          |    |    |
|                  | 10 VA                                | 5                               | 5          |    |    |
|                  | 15 VA                                | 5                               | 5          |    |    |
|                  | 20 VA                                |                                 | 5          |    |    |
|                  | 25 VA                                |                                 | 5          |    |    |
| 2 x 1A           | 5 VA                                 | 5                               | 5          |    |    |
|                  | 10 VA                                | 5                               | 5          |    |    |
|                  | 15 VA                                | 5                               | 5          |    |    |
|                  | 25 VA                                |                                 | 5          |    |    |
| 3 x 5A           | 5 VA                                 | 5                               | 5          |    |    |
|                  | 10 VA                                | 5                               | 5          |    |    |
|                  | 15 VA                                | 5                               | 5          |    |    |
|                  | 20 VA                                |                                 | 5          |    |    |
| 3 x 1A           | 5 VA                                 |                                 | 5          |    |    |
|                  | 10 VA                                | 5                               |            |    |    |
|                  | 15 VA                                | 5                               |            |    |    |
|                  | 25 VA                                |                                 | 5          |    |    |
| 4 x 5A           | 5 VA                                 | 5                               | 5          |    |    |
|                  | 10 VA                                | 5                               | 5          |    |    |
|                  | 15 VA                                | 5                               | 5          |    |    |
|                  | 20 VA                                |                                 | 5          |    |    |
| 4 x 1A           | 15 VA                                | 5                               |            |    |    |
|                  | 25 VA                                |                                 | 5          |    |    |
| 5 x 5A           | 5 VA                                 |                                 |            | 10 | 10 |
|                  | 10 VA                                |                                 |            | 5  | 5  |
|                  | 15 VA                                |                                 |            | 5  | 5  |
|                  | 20 VA                                |                                 |            |    | 5  |
|                  | 25 VA                                |                                 |            |    | 5  |
| 5 x 1A           | 10 VA                                |                                 |            | 5  | 5  |
|                  | 15 VA                                |                                 |            | 5  | 5  |
| 6 x 5A           | 5 VA                                 |                                 |            | 10 | 10 |
|                  | 10 VA                                |                                 |            | 5  | 5  |
|                  | 15 VA                                |                                 |            | 5  | 5  |
|                  | 20 VA                                |                                 |            |    | 5  |
| 6 x 1A           | 5 VA                                 |                                 |            | 10 | 10 |
|                  | 10 VA                                |                                 |            | 5  | 5  |
|                  | 15 VA                                |                                 |            | 5  | 5  |
|                  | 25 VA                                |                                 |            |    | 5  |
| 7 x 5A           | 5 VA                                 |                                 |            | 10 | 10 |
|                  | 10 VA                                |                                 |            | 10 | 10 |
|                  | 15 VA                                |                                 |            | 5  | 5  |
|                  | 20 VA                                |                                 |            |    | 5  |
| 7 x 1A           | 15 VA                                |                                 |            | 5  |    |
|                  | 25 VA                                |                                 |            |    | 5  |
| 8 x 5A           | 5 VA                                 |                                 |            | 10 | 10 |
|                  | 10 VA                                |                                 |            | 10 | 10 |
|                  | 15 VA                                |                                 |            | 5  | 5  |
|                  | 20 VA                                |                                 |            |    | 5  |
| 8 x 1A           | 15 VA                                |                                 |            |    | 5  |
|                  | 25 VA                                |                                 |            |    | 5  |

# INSTRUMENT SECURITY FACTOR

| Transformer type | LW - round current transformer |    |     |      |     |    |      |      |     |      |     |      |      |    |     |      |     |    |
|------------------|--------------------------------|----|-----|------|-----|----|------|------|-----|------|-----|------|------|----|-----|------|-----|----|
|                  | LW01                           |    |     | LW02 |     |    | LW03 |      |     | LW04 |     |      | LW05 |    |     | LW06 |     |    |
|                  | 0.5                            | 1  | 0.2 | 0.5S | 0.5 | 1  | 0.2  | 0.5S | 0.5 | 1    | 0.2 | 0.5S | 0.5  | 1  | 0.2 | 0.5S | 0.5 | 1  |
| Class            | 5                              | 5  | 5   | 5    | 5   | 5  | 5    | 5    | 5   | 5    | 5   | 5    | 5    | 5  | 5   | 5    | 5   | 5  |
| Range [A]        | 10                             | 10 | 10  | 10   | 10  | 10 | 10   | 10   | 10  | 10   | 10  | 10   | 10   | 10 | 10  | 10   | 10  | 10 |
| 50               |                                |    |     |      |     |    |      |      |     |      |     |      |      |    |     |      |     |    |
| 60               |                                |    |     |      |     |    |      |      |     |      |     |      |      |    |     |      |     |    |
| 75               |                                |    |     |      |     |    |      |      |     |      |     |      |      |    |     |      |     |    |
| 100              |                                |    |     |      |     |    |      |      |     |      |     |      |      |    |     |      |     |    |
| 120              |                                |    |     |      |     |    |      |      |     |      |     |      |      |    |     |      |     |    |
| 125              |                                |    |     |      |     |    |      |      |     |      |     |      |      |    |     |      |     |    |
| 150              |                                |    |     |      |     |    |      |      |     |      |     |      |      |    |     |      |     |    |
| 200              |                                |    |     |      |     |    |      |      |     |      |     |      |      |    |     |      |     |    |
| 250              |                                |    |     |      |     |    |      |      |     |      |     |      |      |    |     |      |     |    |
| 300              |                                |    |     |      |     |    |      |      |     |      |     |      |      |    |     |      |     |    |
| 400              |                                |    |     |      |     |    |      |      |     |      |     |      |      |    |     |      |     |    |
| 500              |                                |    |     |      |     |    |      |      |     |      |     |      |      |    |     |      |     |    |
| 600              |                                |    |     |      |     |    |      |      |     |      |     |      |      |    |     |      |     |    |
| 800              |                                |    |     |      |     |    |      |      |     |      |     |      |      |    |     |      |     |    |
| 1000             |                                |    |     |      |     |    |      |      |     |      |     |      |      |    |     |      |     |    |
| 1200             |                                |    |     |      |     |    |      |      |     |      |     |      |      |    |     |      |     |    |
| 1250             |                                |    |     |      |     |    |      |      |     |      |     |      |      |    |     |      |     |    |
| 1500             |                                |    |     |      |     |    |      |      |     |      |     |      |      |    |     |      |     |    |
| 1600             |                                |    |     |      |     |    |      |      |     |      |     |      |      |    |     |      |     |    |
| 2000             |                                |    |     |      |     |    |      |      |     |      |     |      |      |    |     |      |     |    |
| 2500             |                                |    |     |      |     |    |      |      |     |      |     |      |      |    |     |      |     |    |
| 3000             |                                |    |     |      |     |    |      |      |     |      |     |      |      |    |     |      |     |    |
| 3200             |                                |    |     |      |     |    |      |      |     |      |     |      |      |    |     |      |     |    |
| 4000             |                                |    |     |      |     |    |      |      |     |      |     |      |      |    |     |      |     |    |
| 5000             |                                |    |     |      |     |    |      |      |     |      |     |      |      |    |     |      |     |    |

| Transformer type | LE - round current transformer |   |               |   |               |   |                |   |                |   |                |   |                 |   |                 |   |
|------------------|--------------------------------|---|---------------|---|---------------|---|----------------|---|----------------|---|----------------|---|-----------------|---|-----------------|---|
|                  | LE 73/30 (50)                  |   | LE 92/43 (41) |   | LE 95/50 (40) |   | LE 100/58 (41) |   | LE 110/72 (41) |   | LE 135/85 (30) |   | LE 159/113 (40) |   | LE 165/130 (30) |   |
|                  | 1                              | 5 | 1             | 1 | 1             | 1 | 1              | 1 | 1              | 1 | 1              | 1 | 1               | 1 | 1               | 1 |
| Class            | 5                              | 5 | 5             | 5 | 5             | 5 | 5              | 5 | 5              | 5 | 5              | 5 | 5               | 5 | 5               | 5 |
| Range [A]        | 5                              | 5 | 5             | 5 | 5             | 5 | 5              | 5 | 5              | 5 | 5              | 5 | 5               | 5 | 5               | 5 |
| 50               |                                |   |               |   |               |   |                |   |                |   |                |   |                 |   |                 |   |
| 60               |                                |   |               |   |               |   |                |   |                |   |                |   |                 |   |                 |   |
| 75               |                                |   |               |   |               |   |                |   |                |   |                |   |                 |   |                 |   |
| 100              |                                |   |               |   |               |   |                |   |                |   |                |   |                 |   |                 |   |
| 120              |                                |   |               |   |               |   |                |   |                |   |                |   |                 |   |                 |   |
| 125              |                                |   |               |   |               |   |                |   |                |   |                |   |                 |   |                 |   |
| 150              |                                |   |               |   |               |   |                |   |                |   |                |   |                 |   |                 |   |
| 200              |                                |   |               |   |               |   |                |   |                |   |                |   |                 |   |                 |   |
| 250              |                                |   |               |   |               |   |                |   |                |   |                |   |                 |   |                 |   |
| 300              |                                |   |               |   |               |   |                |   |                |   |                |   |                 |   |                 |   |
| 400              |                                |   |               |   |               |   |                |   |                |   |                |   |                 |   |                 |   |
| 500              |                                |   |               |   |               |   |                |   |                |   |                |   |                 |   |                 |   |
| 600              |                                |   |               |   |               |   |                |   |                |   |                |   |                 |   |                 |   |
| 800              |                                |   |               |   |               |   |                |   |                |   |                |   |                 |   |                 |   |
| 1000             |                                |   |               |   |               |   |                |   |                |   |                |   |                 |   |                 |   |
| 1200             |                                |   |               |   |               |   |                |   |                |   |                |   |                 |   |                 |   |
| 1250             |                                |   |               |   |               |   |                |   |                |   |                |   |                 |   |                 |   |
| 1500             |                                |   |               |   |               |   |                |   |                |   |                |   |                 |   |                 |   |
| 1600             |                                |   |               |   |               |   |                |   |                |   |                |   |                 |   |                 |   |
| 2000             |                                |   |               |   |               |   |                |   |                |   |                |   |                 |   |                 |   |
| 2500             |                                |   |               |   |               |   |                |   |                |   |                |   |                 |   |                 |   |
| 3000             |                                |   |               |   |               |   |                |   |                |   |                |   |                 |   |                 |   |
| 3200             |                                |   |               |   |               |   |                |   |                |   |                |   |                 |   |                 |   |
| 4000             |                                |   |               |   |               |   |                |   |                |   |                |   |                 |   |                 |   |
| 5000             |                                |   |               |   |               |   |                |   |                |   |                |   |                 |   |                 |   |



3 YEAR WARRANTY

# LCTM - WOUND PRIMARY SERIES



INPUT:

1 A  
...  
60 A

OUTPUTS:

5 A 1 A

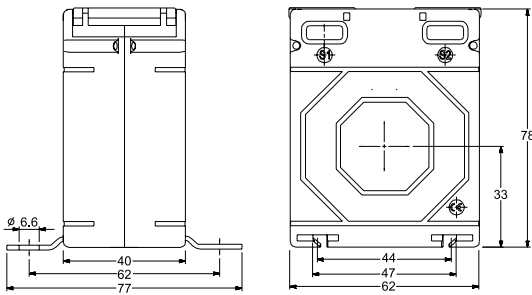
|                   | LCTM 62/W (40) | LCTM 74/W (45) |
|-------------------|----------------|----------------|
| Depth             | 40 mm          | 45 mm          |
| Width             | 62 mm          | 74 mm          |
| Primary current   | 1 A...30 A     | 1 A...60 A     |
| Secondary current | 1 A, 5 A       |                |
| Accuracy class    | 0.2; 0.5; 1    |                |

3 YEAR WARRANTY

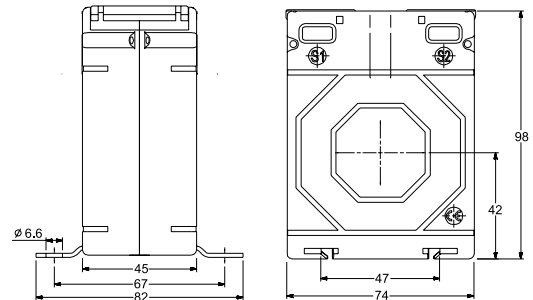


## DIMENSIONS

LCTM 62/W (40)



LCTM 74/W (45)



## ORDERING CODES

LCTM 62W040 [ ] [ ] [ ] [ ] [ ] [ ] [ ] [ ] [ ] [ ]

LCTM 74W045 [ ] [ ] [ ] [ ] [ ] [ ] [ ] [ ] [ ] [ ]

| Secondary current | Code |
|-------------------|------|
| x/5A              | 5    |
| x/1A              | 1    |

| Secondary current | Code |
|-------------------|------|
| x/5A              | 5    |
| x/1A              | 1    |

| Transformer type | LCTM 62/W (40) |     |   |
|------------------|----------------|-----|---|
| Accuracy class   | 0,2            | 0,5 | 1 |
| Code             | 2              | 5   | 1 |

| Transformer type | LCTM 74/W (45) |     |   |
|------------------|----------------|-----|---|
| Accuracy class   | 0.2            | 0.5 | 1 |
| Code             | 2              | 5   | 1 |

| Code  | Rated primary current | Transformer burden |       |     |
|-------|-----------------------|--------------------|-------|-----|
| 0001A | 1A                    | 1VA                | 2.5VA | 5VA |
| 02.5A | 2.5 A                 | 1VA                | 2.5VA | 5VA |
| 0005A | 5 A                   | 1VA                | 2.5VA | 5VA |
| 07.5A | 7.5 A                 | 1VA                | 2.5VA | 5VA |
| 0010A | 10 A                  | 1VA                | 2.5VA | 5VA |
| 0015A | 15 A                  | 1VA                | 2.5VA | 5VA |
| 0020A | 20 A                  | 1VA                | 2.5VA | 5VA |
| 0025A | 25 A                  | 1VA                | 2.5VA | 5VA |
| 0030A | 30 A                  | 1VA                | 2.5VA | 5VA |

| Code  | Rated primary current | Transformer burden |     |      |
|-------|-----------------------|--------------------|-----|------|
| 0001A | 1A                    | 1.5VA              | 5VA | 10VA |
| 02.5A | 2.5 A                 | 1.5VA              | 5VA | 10VA |
| 0005A | 5 A                   | 1.5VA              | 5VA | 10VA |
| 07.5A | 7.5 A                 | 1.5VA              | 5VA | 10VA |
| 0010A | 10 A                  | 1.5VA              | 5VA | 10VA |
| 0015A | 15 A                  | 1.5VA              | 5VA | 10VA |
| 0020A | 20 A                  | 1.5VA              | 5VA | 10VA |
| 0025A | 25 A                  | 1.5VA              | 5VA | 10VA |
| 0030A | 30 A                  | 1.5VA              | 5VA | 10VA |
| 0040A | 40 A                  | 1.5VA              | 5VA | 10VA |
| 0050A | 50 A                  | 1.5VA              | 5VA | 10VA |
| 0060A | 60 A                  | 1.5VA              | 5VA | 10VA |

Ordering example: Order code LCTM 62W0400030A55 means the transformer LCTM 62/W(40) 30/5A; Class 0.5; power 2.5VA

ACCESSORIES:  
DIN rail mounting base  
Order code: LH000-0904-130-124

# LCTR - ROUND CONDUCTOR SERIES

|                   | LCTR 45/14 (40) | LCTR 50/14 (30) | LCTR 50/14 (50)      | LCTR 62/R (40) |
|-------------------|-----------------|-----------------|----------------------|----------------|
| Hole diameter     | ∅ 14 mm         | ∅ 14 mm         | ∅ 14 mm              | ∅ 22 mm        |
| Depth             | 40 mm           | 31 mm           | 51 mm                | 40 mm          |
| Width             | 45 mm           | 50 mm           | 50 mm                | 62 mm          |
| Primary current   | 30 A...300 A    | 40 A...300 A    | 30 A...300 A         | 50 A...600 A   |
| Secondary current | 1 A, 5 A        |                 |                      |                |
| Accuracy class    | 0.5; 1; 3       |                 | 0.2; 0.5S; 0.5; 1; 3 |                |

INPUT:

30 A  
...  
600 A

OUTPUTS:

5 A 1 A

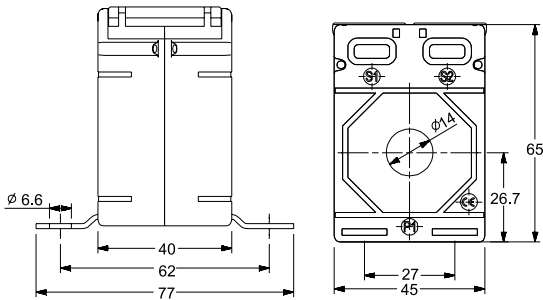


3 YEAR WARRANTY

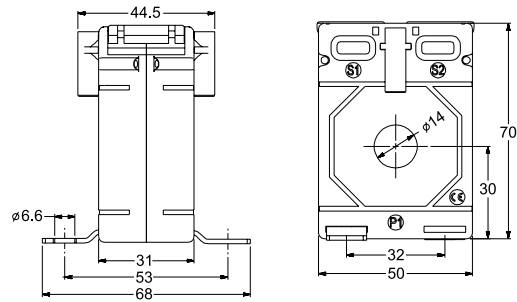
ePLAN

## DIMENSIONS

LCTR 45/14 (40)



LCTR 50/14 (30)



## ORDERING CODES

LCTR 451440

LCTR 501430

Secondary current

Code

x/5A 5

x/1A 1

Transformer type

LCTR 45/14 (40)

Accuracy class

0.5

1

3

| Code  | Rated primary current | Transformer burden |         |         | Code |
|-------|-----------------------|--------------------|---------|---------|------|
| 0030A | 30 A                  | -                  | 1 VA    | 1.5 VA  | 1    |
| 0040A | 40 A                  | -                  | 1 VA    | 1.5 VA  |      |
| 0050A | 50 A                  | -                  | 1.5 VA  | 2.5 VA  |      |
| 0060A | 60 A                  | -                  | 1.5 VA  | 2.5 VA  |      |
| 0075A | 75 A                  | -                  | 2.5 VA  | 3.75 VA |      |
| 0080A | 80 A                  | 1 VA               | 2.5 VA  | 3.75 VA |      |
| 0100A | 100 A                 | 1.5 VA             | 3.75 VA | 3.75 VA | 5    |
| 0120A | 120 A                 | 1.5 VA             | 3.75 VA | 5 VA    |      |
| 0125A | 125 A                 | 2.5 VA             | 3.75 VA | 5 VA    |      |
| 0150A | 150 A                 | 2.5 VA             | 5 VA    | 5 VA    |      |
| 0200A | 200 A                 | 3.75 VA            | 7.5 VA  | 7.5 VA  |      |
| 0250A | 250 A                 | 5 VA               | 7.5 VA  | 10 VA   |      |
| 0300A | 300 A                 | 5 VA               | 10 VA   | 12.5 VA |      |

Secondary current

Code

x/5A 5

x/1A 1

Transformer type

LCTR 50/14 (30)

Accuracy class

0.5

1

3

| Code  | Rated primary current | Transformer burden |         |        | Code |
|-------|-----------------------|--------------------|---------|--------|------|
| 0040A | 40 A                  | -                  | 1 VA    | 1.5 VA | 1    |
| 0050A | 50 A                  | -                  | 1.5 VA  | 2 VA   |      |
| 0060A | 60 A                  | -                  | 1.5 VA  | 2 VA   |      |
| 0075A | 75 A                  | -                  | 1.5 VA  | 2.5 VA |      |
| 0080A | 80 A                  | -                  | 1.5 VA  | 2.5 VA |      |
| 0100A | 100 A                 | 2.5 VA             | 3.75 VA | 5 VA   |      |
| 0120A | 120 A                 | 2.5 VA             | 3.75 VA | 5 VA   | 5    |
| 0125A | 125 A                 | 2.5 VA             | 3.75 VA | 5 VA   |      |
| 0150A | 150 A                 | 3.75 VA            | 5 VA    | 7.5 VA |      |
| 0200A | 200 A                 | 3.75 VA            | 5 VA    | 7.5 VA |      |
| 0250A | 250 A                 | 5 VA               | 7.5 VA  | 7.5 VA |      |
| 0300A | 300 A                 | 7.5 VA             | 7.5 VA  | 7.5 VA |      |

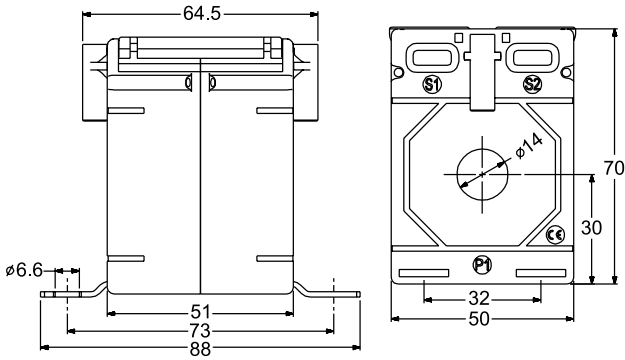
**Ordering example:** Order code LCTR 4514400100A55 means the transformer LCTR 45/14(40) 100/5A meeting the requirements of the class:

- kl. 0.5 1.5 VA
- kl. 1 3.75 VA
- kl. 3 3.75 VA

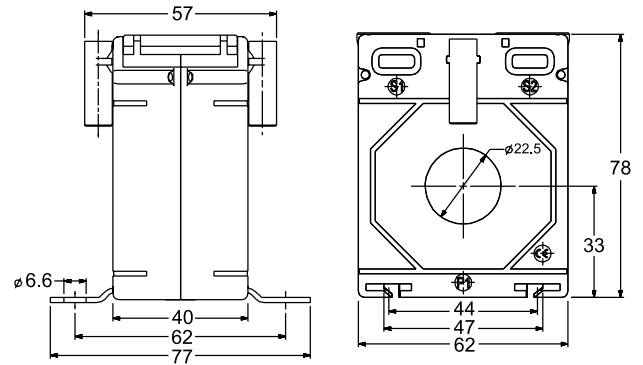
# LCTR - ROUND CONDUCTOR SERIES

## DIMENSIONS

### LCTR 50/14 (50)



### LCTR 62/R (40)



## ORDERING CODES

LCTR 501450

LCTR 62R040

| Secondary current | Code |
|-------------------|------|
| x/5A              | 5    |
| x/1A              | 1    |

| Secondary current | Code |
|-------------------|------|
| x/5A              | 5    |
| x/1A              | 1    |

| Transformer type | LCTR 50/14 (50) |   |   |
|------------------|-----------------|---|---|
| Accuracy class   | 0.5             | 1 | 3 |

| Transformer type | LCTR 62/R (40) |     |      |     |   |   |
|------------------|----------------|-----|------|-----|---|---|
| Accuracy class   | 0.2S           | 0.2 | 0.5S | 0.5 | 1 | 3 |
| Code             | S              | 2   | R    | -   | - | - |

| Code  | Rated primary current | Transformer burden |         |         | Code |
|-------|-----------------------|--------------------|---------|---------|------|
| 0030A | 30 A                  | -                  | 1 VA    | 1 VA    | 1    |
| 0040A | 40 A                  | -                  | 1 VA    | 1 VA    |      |
| 0050A | 50 A                  | 1.5 VA             | 1.5 VA  | 2 VA    |      |
| 0060A | 60 A                  | 1.5 VA             | 1.5 VA  | 2.5 VA  |      |
| 0075A | 75 A                  | 2.5 VA             | 5 VA    | 5 VA    |      |
| 0080A | 80 A                  | 2.5 VA             | 5 VA    | 7.5 VA  |      |
| 0100A | 100 A                 | 3.75 VA            | 5 VA    | 7.5 VA  |      |
| 0120A | 120 A                 | 3.75 VA            | 5 VA    | 7.5 VA  |      |
| 0125A | 125 A                 | 3.75 VA            | 5 VA    | 7.5 VA  |      |
| 0150A | 150 A                 | 5 VA               | 7.5 VA  | 10 VA   |      |
| 0200A | 200 A                 | 7.5 VA             | 10 VA   | 12.5 VA | 5    |
| 0250A | 250 A                 | 10 VA              | 12.5 VA | 15 VA   |      |
| 0300A | 300 A                 | 10 VA              | 12.5 VA | 15 VA   |      |

| Code  | Rated primary current | Transformer burden |        |        |         |        |         | Code |       |         |
|-------|-----------------------|--------------------|--------|--------|---------|--------|---------|------|-------|---------|
| 0050A | 50 A                  | -                  | -      | -      | -       | 1.5 VA | 2.5 VA  | 1    |       |         |
| 0060A | 60 A                  | -                  | -      | -      | -       | 2.5 VA | 3.75 VA |      |       |         |
| 0075A | 75 A                  | -                  | -      | -      | 1.5 VA  | 2.5 VA | 3.75 VA |      |       |         |
| 0080A | 80 A                  | -                  | -      | -      | 2.5 VA  | 2.5 VA | 3.75 VA |      |       |         |
| 0100A | 100 A                 | -                  | 1.5 VA | -      | 2.5 VA  | 5 VA   | 7.5 VA  |      |       |         |
| 0120A | 120 A                 | -                  | 1.5 VA | -      | 3.75 VA | 5 VA   | 7.5 VA  |      |       |         |
| 0125A | 125 A                 | -                  | 1.5 VA | -      | 3.75 VA | 5 VA   | 7.5 VA  |      |       |         |
| 0150A | 150 A                 | 2.5 VA             | 2.5 VA | 2.5 VA | 5 VA    | 5 VA*  | 7.5 VA  |      | 10 VA |         |
| 0200A | 200 A                 | 5 VA               | 5 VA   | 5 VA   | 5 VA*   | 7.5 VA | 5 VA*   |      | 10 VA | 12.5 VA |
| 0250A | 250 A                 | 5 VA               | 5 VA   | 5 VA   | 10 VA   | 15 VA  | 15 VA   |      |       |         |
| 0300A | 300 A                 | 5 VA               | 5 VA   | 5 VA   | 10 VA   | 15 VA  | 15 VA   |      |       |         |
| 0400A | 400 A                 | 5 VA               | 7.5 VA | 5 VA   | 15 VA   | 15 VA  | 20 VA   |      |       |         |
| 0500A | 500 A                 | 10 VA              | 10 VA  | 10 VA  | 15 VA   | 15 VA  | 20 VA   |      |       |         |
| 0600A | 600 A                 | 10 VA              | 10 VA  | 10 VA  | 15 VA   | 15 VA  | 20 VA   |      |       |         |

**Ordering example:** Order code LCTR 5014500100A55 means the transformer LCTR 50/14(50) 100/5A meeting the requirements of the class:

- kl. 0.5 3.75 VA
- kl. 1 5 VA
- kl. 3 7.5 VA

\* The custom value of the nominal power, which should be given when ordering the transformer.

**ACCESSORIES:**  
DIN rail mounting base  
- for details see page 46

3 YEAR WARRANTY

ePLAN



# LCTB 45 - BUSBAR SERIES

| LCTB 45/21 (40)   |              |
|-------------------|--------------|
| Hole diameter     | ∅ 20 mm      |
| Busbar            | 20 x 10 mm   |
| Depth             | 40 mm        |
| Width             | 45 mm        |
| Primary current   | 50 A...400 A |
| Secondary current | 1 A, 5 A     |
| Accuracy class    | 0.5; 1; 3    |

INPUT:

50 A  
...  
400 A

OUTPUTS:

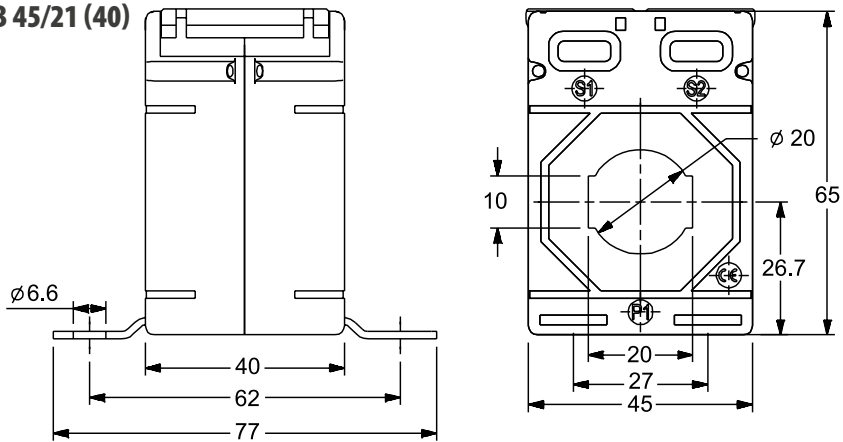
5 A 1 A



3 YEAR WARRANTY

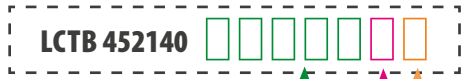
## DIMENSIONS

LCTB 45/21 (40)



ePLAN

## ORDERING CODES



| Secondary current | Code |
|-------------------|------|
| x/5A              | 5    |
| x/1A              | 1    |

| Transformer type | LCTB 45/21(40)         |                           |   |   |
|------------------|------------------------|---------------------------|---|---|
|                  | Accuracy class         | 0.5                       | 1 | 3 |
| <b>Code</b>      | <b>Primary current</b> | <b>Transformer burden</b> |   |   |

|       |       |         |         |         |   |
|-------|-------|---------|---------|---------|---|
| 0050A | 50 A  | -       | 1.5 VA  | 2 VA    | 1 |
| 0060A | 60 A  | -       | 1.5 VA  | 2 VA    |   |
| 0075A | 75 A  | -       | 2.5 VA  | 3 VA    |   |
| 0080A | 80 A  | 1 VA    | 2.5 VA  | 3 VA    | 5 |
| 0100A | 100 A | 1.5 VA  | 3.75 VA | 3.75 VA |   |
| 0120A | 120 A | 1.5 VA  | 3.75 VA | 3.75 VA |   |
| 0125A | 125 A | 2.5 VA  | 3.75 VA | 5 VA    |   |
| 0150A | 150 A | 2.5 VA  | 5 VA    | 5 VA    |   |
| 0200A | 200 A | 3.75 VA | 5 VA    | 5 VA    |   |
| 0250A | 250 A | 3.75 VA | 5 VA    | 7.5 VA  |   |
| 0300A | 300 A | 5 VA    | 5 VA    | 7.5 VA  |   |
| 0400A | 400 A | 5 VA    | 5 VA    | 7.5 VA  |   |

**Ordering example:** Order code LCTB 4521400100A55 means the transformer LCTB 45/21(40) 100/5A meeting the requirements of the class:

- kl. 0.5 1.5 VA
- kl. 1 3.75 VA
- kl. 3 3.75 VA

**ACCESSORIES:**

DIN rail mounting base

Order code: LH000-0904-130-002

# LCTB 50 - BUSBAR SERIES



INPUT:

40 A  
...  
600 A

OUTPUTS:

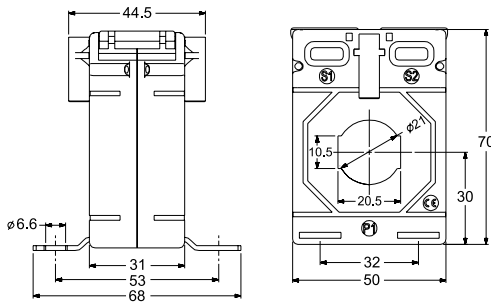
5 A 1 A



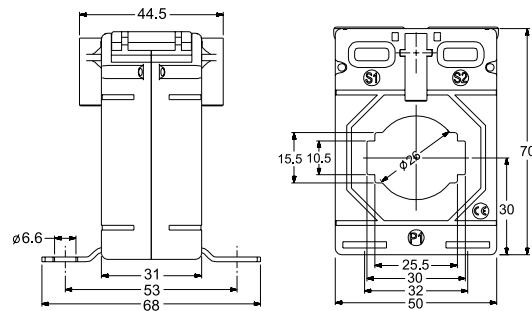
|                   | LCTB 50/21 (30) | LCTB 50/30 (30) | LCTB 50/21 (50) | LCTB 50/30 (50) |
|-------------------|-----------------|-----------------|-----------------|-----------------|
| Hole diameter     | ∅ 21 mm         | ∅ 26 mm         | ∅ 21 mm         | ∅ 26 mm         |
| Busbar            | 20 x 10 mm      | 30 x 10 mm      | 20 x 10 mm      | 30 x 10 mm      |
| Depth             | 31 mm           | 31 mm           | 51 mm           | 51 mm           |
| Width             | 50 mm           | 50 mm           | 50 mm           | 50 mm           |
| Primary current   | 40 A...400 A    | 75 A...600 A    | 50 A...400 A    | 50 A... 600 A   |
| Secondary current |                 |                 |                 | 1 A, 5 A        |
| Accuracy class    |                 |                 |                 | 0.5; 1; 3       |

## DIMENSIONS

LCTB 50/21 (30)



LCTB 50/30 (30)



## ORDERING CODES

LCTB 502130

LCTB 503030

| Secondary current | Code |
|-------------------|------|
| x/5A              | 5    |
| x/1A              | 1    |

| Secondary current | Code |
|-------------------|------|
| x/5A              | 5    |
| x/1A              | 1    |

| Transformer type | LCTB 50/21 (30) |   |   |
|------------------|-----------------|---|---|
| Accuracy class   | 0.5             | 1 | 3 |

| Transformer type | LCTB 50/30 (30) |   |   |
|------------------|-----------------|---|---|
| Accuracy class   | 0.5             | 1 | 3 |

| Code  | Rated primary current | Transformer burden |         |         | Code |
|-------|-----------------------|--------------------|---------|---------|------|
| 0040A | 40 A                  | -                  | -       | 1 VA    | 3    |
| 0050A | 50 A                  | -                  | 1 VA    | 2 VA    | 1    |
| 0060A | 60 A                  | -                  | 1 VA    | 2 VA    |      |
| 0075A | 75 A                  | -                  | 1.5 VA  | 2.5 VA  | 5    |
| 0080A | 80 A                  | 1 VA               | 2.5 VA  | 3.75 VA |      |
| 0100A | 100 A                 | 1.5 VA             | 2.5 VA  | 3.75 VA | 5    |
| 0120A | 120 A                 | 2.5 VA             | 2.5 VA  | 3.75 VA |      |
| 0125A | 125 A                 | 2.5 VA             | 3.75 VA | 5 VA    |      |
| 0150A | 150 A                 | 2.5 VA             | 5 VA    | 5 VA    |      |
| 0200A | 200 A                 | 3.75 VA            | 5 VA    | 5 VA    |      |
| 0250A | 250 A                 | 5 VA               | 5 VA    | 5 VA    |      |
| 0300A | 300 A                 | 5 VA               | 7.5 VA  | 7.5 VA  |      |
| 0400A | 400 A                 | 5 VA               | 7.5 VA  | 7.5 VA  |      |

| Code  | Rated primary current | Transformer burden |                  |         | Code |
|-------|-----------------------|--------------------|------------------|---------|------|
| 0075A | 75 A                  | -                  | 1 VA             | 1.5 VA  | 1    |
| 0080A | 80 A                  | -                  | 1.5 VA           | 2 VA    |      |
| 0100A | 100 A                 | 1 VA               | 2.5 VA           | 2.5 VA  | 5    |
| 0120A | 120 A                 | 1 VA               | 2.5 VA           | 3 VA    |      |
| 0125A | 125 A                 | 1 VA               | 2.5 VA           | 3 VA    |      |
| 0150A | 150 A                 | 2.5 VA             | 3.75 VA          | 3.75 VA |      |
| 0200A | 200 A                 | 2.5 VA             | 5 VA             | 5 VA    |      |
| 0250A | 250 A                 | 5 VA               | 5 VA             | 6.25 VA |      |
| 0300A | 300 A                 | 5 VA               | 5 VA             | 6.25 VA |      |
| 0400A | 400 A                 | 5 VA               | 5 VA *   6.25 VA | 6.25 VA |      |
| 0500A | 500 A                 | 5 VA               | 6.25 VA          | 7.5 VA  |      |
| 0600A | 600 A                 | 5 VA               | 7.5 VA           | 10 VA   |      |

Ordering example: Order code LCTB 5021300100A55 means the transformer LCTB 50/21(30) 100/5A meeting the requirements of the class: kl. 0.5 1.5 VA; kl. 1 2.5 VA; kl. 3 3.75 VA

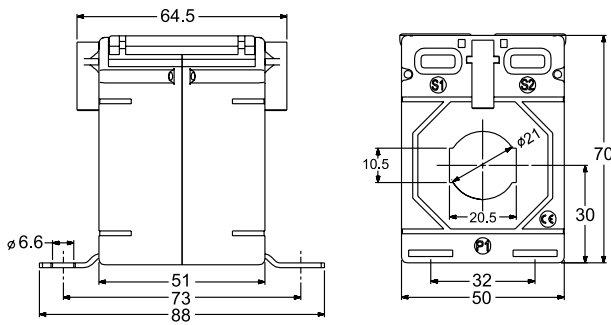
\* The custom value of the nominal power, which should be given when ordering the transformer.



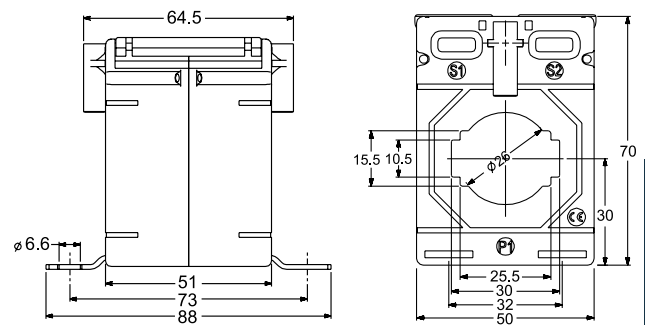
# LCTB 50 - BUSBAR SERIES

## DIMENSIONS

### LCTB50/21 (50)



### LCTB 50/30 (50)



## ORDERING CODES

LCTB 502150

LCTB 503050

| Secondary current | Code |
|-------------------|------|
| x/5A              | 5    |
| x/1A              | 1    |

| Secondary current | Code |
|-------------------|------|
| x/5A              | 5    |
| x/1A              | 1    |

| Transformer type | LCTB 50/21 (50) |     |   |
|------------------|-----------------|-----|---|
|                  | Accuracy class  | 0.5 | 1 |

| Transformer type | LCTB 50/30 (50) |     |   |
|------------------|-----------------|-----|---|
|                  | Accuracy class  | 0.5 | 1 |

| Code  | Rated primary current | Transformer burden |         |         | Code |
|-------|-----------------------|--------------------|---------|---------|------|
|       |                       | 0.5                | 1       | 3       |      |
| 0050A | 50 A                  | 1 VA               | 2.5 VA  | 3 VA    | 5    |
| 0060A | 60 A                  | 1 VA               | 2.5 VA  | 3.75 VA |      |
| 0075A | 75 A                  | 1.5 VA             | 2.5 VA  | 3.75 VA |      |
| 0080A | 80 A                  | 2.5 VA             | 5 VA    | 5 VA    |      |
| 0100A | 100 A                 | 2.5 VA             | 5 VA    | 7.5 VA  |      |
| 0120A | 120 A                 | 3.75 VA            | 5 VA    | 7.5 VA  |      |
| 0125A | 125 A                 | 5 VA               | 5 VA    | 7.5 VA  |      |
| 0150A | 150 A                 | 5 VA               | 10 VA   | 10 VA   |      |
| 0200A | 200 A                 | 7.5 VA             | 10 VA   | 12.5 VA |      |
| 0250A | 250 A                 | 7.5 VA             | 10 VA   | 15 VA   |      |
| 0300A | 300 A                 | 7.5 VA             | 12.5 VA | 15 VA   |      |
| 0400A | 400 A                 | 10 VA              | 15 VA   | 15 VA   |      |

| Code  | Rated primary current | Transformer burden |         |         | Code |
|-------|-----------------------|--------------------|---------|---------|------|
|       |                       | 0.5                | 1       | 3       |      |
| 0050A | 50 A                  | -                  | 1.5 VA  | 1.5 VA  | 1    |
| 0060A | 60 A                  | -                  | 1.5 VA  | 2 VA    |      |
| 0075A | 75 A                  | -                  | 2.5 VA  | 2.5 VA  |      |
| 0080A | 80 A                  | -                  | 2.5 VA  | 3.75 VA |      |
| 0100A | 100 A                 | 1 VA               | 3.75 VA | 3.75 VA | 5    |
| 0120A | 120 A                 | 2.5 VA             | 5 VA    | 5 VA    |      |
| 0125A | 125 A                 | 2.5 VA             | 5 VA    | 5 VA    |      |
| 0150A | 150 A                 | 5 VA               | 5 VA    | 7.5 VA  |      |
| 0200A | 200 A                 | 5 VA               | 7.5 VA  | 10 VA   |      |
| 0250A | 250 A                 | 5 VA               | 10 VA   | 10 VA   |      |
| 0300A | 300 A                 | 5 VA               | 10 VA   | 10 VA   |      |
| 0400A | 400 A                 | 10 VA              | 12.5 VA | 12.5 VA |      |
| 0500A | 500 A                 | 10 VA              | 12.5 VA | 15 VA   |      |
| 0600A | 600 A                 | 10 VA              | 15 VA   | 15 VA   |      |

**Ordering example:** Order code LCTB 5021500100A55 means the transformer LCTB 50/21(50) 100/5A meeting the requirements of the class:

- kl. 0.5 2.5 VA
- kl. 1 5 VA
- kl. 3 7.5 VA

### ACCESSORIES:

DIN rail mounting base  
- for details see page 46

3 YEAR WARRANTY

ePLAN

# LCTB 62 - BUSBAR SERIES



INPUT:

40 A

... 800 A

OUTPUTS:

5 A

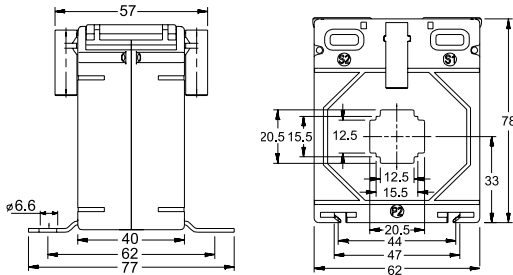
1 A



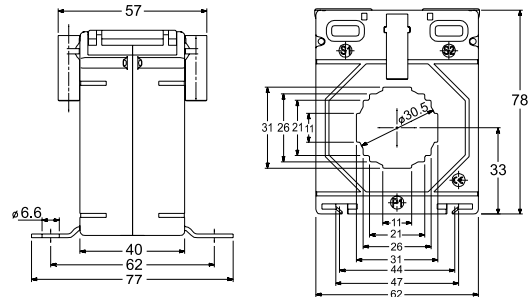
|                   | LCTB 62/20 (40)            | LCTB 62/30 (40)       | LCTB 62/30 (50) | LCTB 62/40 (40)          |
|-------------------|----------------------------|-----------------------|-----------------|--------------------------|
| Hole diameter     | -                          | ∅ 30 mm               | ∅ 28 mm         | ∅ 31 mm                  |
| Busbar            | 20x12 mm                   | 30x10 mm, 2x25 x10 mm | 30x10 mm        | 40x10 mm, 2 x 30 x 10 mm |
| Depth             | 40 mm                      | 40 mm                 | 50 mm           | 40 mm                    |
| Width             | 62 mm                      | 62 mm                 | 62 mm           | 62 mm                    |
| Primary current   | 50A...400A                 | 50 A...800 A          | 40 A...800 A    | 100 A...800 A            |
| Secondary current | 1 A, 5 A                   |                       |                 |                          |
| Accuracy class    | 0.2S; 0.2; 0.5S; 0.5; 1; 3 |                       |                 |                          |

## DIMENSIONS

LCTB 62/20 (40)



LCTB 62/30 (40)



## ORDERING CODES

LCTB 622040

LCTB 623040

| Secondary current | Code |
|-------------------|------|
| x/5A              | 5    |
| x/1A              | 1    |

| Secondary current | Code |
|-------------------|------|
| x/5A              | 5    |
| x/1A              | 1    |

| Transformer type | LCTB 62/20 (40) |     |      |     |   |   |
|------------------|-----------------|-----|------|-----|---|---|
| Accuracy class   | 0.2S            | 0.2 | 0.5S | 0.5 | 1 | 3 |
| Code             | S               | 2   | R    |     |   |   |

| Transformer type | LCTB 62/30 (40) |     |      |     |   |   |
|------------------|-----------------|-----|------|-----|---|---|
| Accuracy class   | 0.2S            | 0.2 | 0.5S | 0.5 | 1 | 3 |
| Code             | S               | 2   | R    |     |   |   |

| Code  | Rated primary current | Transformer burden |        |         |         |         |         | Code |
|-------|-----------------------|--------------------|--------|---------|---------|---------|---------|------|
| 0050A | 50 A                  | -                  | -      | -       | -       | 1.5 VA  | 2.5 VA  | 1    |
| 0060A | 60 A                  | -                  | -      | -       | -       | 2.5 VA  | 3.75 VA |      |
| 0075A | 75 A                  | -                  | -      | -       | 1.5 VA  | 3.75 VA | 3.75 VA |      |
| 0080A | 80 A                  | -                  | -      | -       | 2.5 VA  | 3.75 VA | 3.75 VA |      |
| 0100A | 100 A                 | 1.5 VA             | 1.5 VA | 1.5 VA  | 2.5 VA  | 5 VA    | 7.5 VA  | 5    |
| 0120A | 120 A                 | 1.5 VA             | 1.5 VA | 1.5 VA  | 3.75 VA | 5 VA    | 7.5 VA  |      |
| 0125A | 125 A                 | 1.5 VA             | 1.5 VA | 1.5 VA  | 3.75 VA | 5 VA    | 7.5 VA  |      |
| 0150A | 150 A                 | 2 VA               | 2.5 VA | 2.0 VA  | 5 VA    | 7.5 VA  | 10 VA   |      |
| 0200A | 200 A                 | 3.75 VA            | 5 VA   | 3.75 VA | 7.5 VA  | 10 VA   | 12.5 VA |      |
| 0250A | 250 A                 | 3.75 VA            | 5 VA   | 3.75 VA | 10 VA   | 15 VA   | 15 VA   |      |
| 0300A | 300 A                 | 3.75 VA            | 5 VA   | 3.75 VA | 10 VA   | 15 VA   | 15 VA   |      |
| 0400A | 400 A                 | 5 VA               | 7.5 VA | 5 VA    | 15 VA   | 15 VA   | 20 VA   |      |
| 0500A | 500 A                 | 5 VA               | 10 VA  | 5 VA    | 15 VA   | 15 VA   | 20 VA   |      |

| Code  | Rated primary current | Transformer burden |         |        |         |         |         | Code |
|-------|-----------------------|--------------------|---------|--------|---------|---------|---------|------|
| 0050A | 50 A                  | -                  | -       | -      | -       | 1.25 VA | 2 VA    | 1    |
| 0060A | 60 A                  | -                  | -       | -      | -       | 1.5 VA  | 2 VA    |      |
| 0075A | 75 A                  | -                  | -       | -      | -       | 1.5 VA  | 2 VA    |      |
| 0080A | 80 A                  | -                  | -       | -      | -       | 2 VA    | 2.5 VA  |      |
| 0100A | 100 A                 | 1 VA               | 1 VA    | 1 VA   | 1.5 VA  | 2.5 VA  | 3.75 VA | 5    |
| 0120A | 120 A                 | 1 VA               | 1 VA    | 1 VA   | 2.5 VA  | 3.75 VA | 5 VA    |      |
| 0125A | 125 A                 | 1 VA               | 1 VA    | 1 VA   | 2.5 VA  | 3.75 VA | 5 VA    |      |
| 0150A | 150 A                 | 2.5 VA             | 1.5 VA  | 2.5 VA | 3.75 VA | 5 VA    | 7.5 VA  |      |
| 0200A | 200 A                 | 5 VA               | 2.5 VA  | 5 VA   | 5 VA    | 7.5 VA  | 10 VA   |      |
| 0250A | 250 A                 | 5 VA               | 3.75 VA | 5 VA   | 5 VA    | 10 VA   | 15 VA   |      |
| 0300A | 300 A                 | 5 VA               | 3.75 VA | 5 VA   | 10 VA   | 10 VA   | 15 VA   |      |
| 0400A | 400 A                 | 5 VA               | 5 VA    | 5 VA   | 12.5 VA | 12.5 VA | 15 VA   |      |
| 0500A | 500 A                 | 5 VA               | 7.5 VA  | 5 VA   | 12.5 VA | 12.5 VA | 15 VA   |      |
| 0600A | 600 A                 | 7.5 VA             | 7.5 VA  | 7.5 VA | 15 VA   | 15 VA   | 20 VA   |      |
| 0750A | 750 A                 | 10 VA              | 10 VA   | 10 VA  | 15 VA   | 15 VA   | 20 VA   |      |
| 0800A | 800 A                 | 10 VA              | 10 VA   | 10 VA  | 15 VA   | 15 VA   | 20 VA   |      |

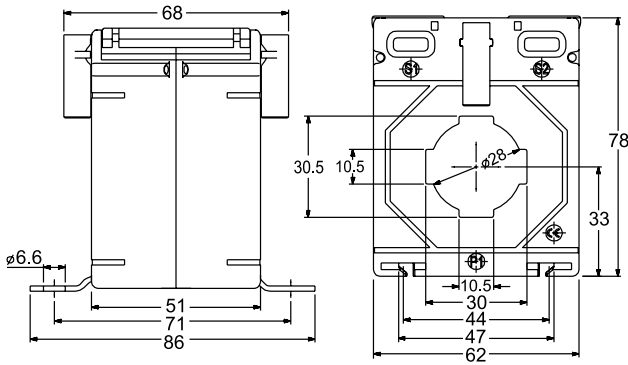
Ordering example: Order code LCTB 6220400100A55 means the transformer LCTB 62/20(40) 100/5A meeting the requirements of the class: kl. 0.5 - 2.5 VA; kl. 1 - 5 VA; kl. 3 - 7.5 VA



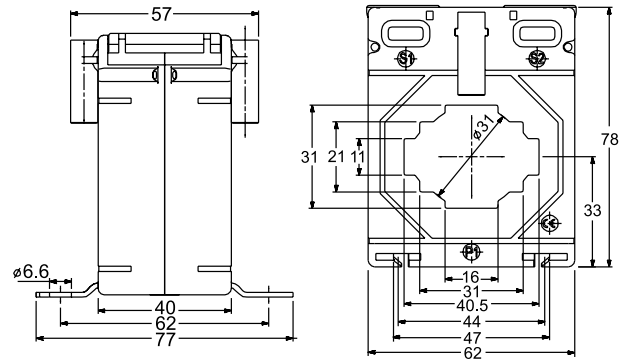
# LCTB 62 - BUSBAR SERIES

## DIMENSIONS

### LCTB 62/30 (50)



### LCTB 62/40 (40)



## ORDERING CODES

LCTB 623050

LCTB 624040

| Secondary current | Code |
|-------------------|------|
| x/5A              | 5    |
| x/1A              | 1    |

| Secondary current | Code |
|-------------------|------|
| x/5A              | 5    |
| x/1A              | 1    |

| Transformer type | LCTB 62/30 (50) |     |      |     |   |   |
|------------------|-----------------|-----|------|-----|---|---|
| Accuracy class   | 0.2S            | 0.2 | 0.5S | 0.5 | 1 | 3 |
| Code             | S               | 2   | R    |     |   |   |

| Transformer type | LCTB 62/40 (40) |     |      |     |   |   |
|------------------|-----------------|-----|------|-----|---|---|
| Accuracy class   | 0.2S            | 0.2 | 0.5S | 0.5 | 1 | 3 |
| Code             | S               | 2   | R    | -   | - | - |

| Code  | Rated primary current | Transformer burden |         |         |        |         |         | Code |
|-------|-----------------------|--------------------|---------|---------|--------|---------|---------|------|
| 0040A | 40 A                  | -                  | -       | -       | -      | -       | 1 VA    | 3    |
| 0050A | 50 A                  | -                  | -       | -       | -      | 1.5 VA  | 2.5 VA  | 1    |
| 0060A | 60 A                  | -                  | -       | -       | -      | 2.5 VA  | 3.75 VA |      |
| 0075A | 75 A                  | -                  | -       | -       | 2.5 VA | 2.5 VA  | 3.75 VA | 5    |
| 0080A | 80 A                  | -                  | -       | -       | 2.5 VA | 3.75 VA | 5 VA    |      |
| 0100A | 100 A                 | 1.25 VA            | 1.25 VA | 1.25 VA | 2.5 VA | 5 VA    | 7.5 VA  |      |
| 0120A | 120 A                 | 1.25 VA            | 1.25 VA | 1.25 VA | 5 VA   | 5 VA    | 7.5 VA  |      |
| 0125A | 125 A                 | 1.25 VA            | 1.25 VA | 1.25 VA | 5 VA   | 5 VA    | 7.5 VA  |      |
| 0150A | 150 A                 | 2 VA               | 2 VA    | 2 VA    | 5 VA   | 7.5 VA  | 10 VA   |      |
| 0200A | 200 A                 | 5 VA               | 3.75 VA | 5 VA    | 10 VA  | 15 VA   | 15 VA   |      |
| 0250A | 250 A                 | 5 VA               | 5 VA    | 5 VA    | 15 VA  | 15 VA   | 20 VA   |      |
| 0300A | 300 A                 | 5 VA               | 5 VA    | 5 VA    | 15 VA  | 15 VA   | 20 VA   |      |
| 0400A | 400 A                 | 10 VA              | 6.25 VA | 10 VA   | 15 VA  | 30 VA   | 30 VA   |      |
| 0500A | 500 A                 | 5 VA               | 7.5 VA  | 5 VA    | 15 VA  | 30 VA   | 30 VA   |      |
| 0600A | 600 A                 | 6.25 VA            | 10 VA   | 6.25 VA | 20 VA  | 30 VA   | 30 VA   |      |
| 0750A | 750 A                 | 6.25 VA            | 10 VA   | 6.25 VA | 20 VA  | 30 VA   | 30 VA   |      |
| 0800A | 800 A                 | 6.25 VA            | 10 VA   | 6.25 VA | 20 VA  | 30 VA   | 35 VA   |      |

| Code  | Rated primary current | Transformer burden |        |         |        |         |         | Code |       |
|-------|-----------------------|--------------------|--------|---------|--------|---------|---------|------|-------|
| 0100A | 100 A                 | -                  | -      | -       | -      | 1 VA    | 1.5 VA  | 1    |       |
| 0120A | 120 A                 | -                  | -      | -       | -      | 1.5 VA  | 2.5 VA  |      |       |
| 0125A | 125 A                 | -                  | -      | -       | -      | 1.5 VA  | 2.5 VA  |      |       |
| 0150A | 150 A                 | -                  | -      | -       | -      | 2.5 VA  | 3 VA    | 5    |       |
| 0200A | 200 A                 | 1 VA               | 1 VA   | 1 VA    | 1.5 VA | 3.75 VA | 3.75 VA |      |       |
| 0250A | 250 A                 | 1.5 VA             | 1.5 VA | 1.5 VA  | 2.5 VA | 5 VA    | 5 VA    |      |       |
| 0300A | 300 A                 | 1.5 VA             | 1.5 VA | 1.5 VA  | 5 VA   | 5 VA    | 5 VA    |      |       |
| 0400A | 400 A                 | 2.5 VA             | 2.5 VA | 2.5 VA  | 5 VA   | 5 VA    | 7.5 VA  |      |       |
| 0500A | 500 A                 | 2.5 VA             | 5 VA   | 3.75 VA | 5 VA   | 5 VA*   | 7.5 VA  |      | 10 VA |
| 0600A | 600 A                 | 2.5 VA             | 7.5 VA | 2.5 VA  | 7.5 VA | 10 VA   | 12.5 VA |      |       |
| 0750A | 750 A                 | 5 VA               | 10 VA  | 5 VA    | 10 VA  | 10 VA   | 12.5 VA |      |       |
| 0800A | 800 A                 | 5 VA               | 10 VA  | 5 VA    | 10 VA  | 10 VA   | 12.5 VA |      |       |

\* The custom value of the nominal power, which should be given when ordering the transformer.

**Ordering example:** Order code LCTB 6230500100A55 means the transformer LCTB 62/30(50) 100/5A meeting the requirements of the class:

- kl. 0.5 2.5 VA
- kl. 1 5 VA
- kl. 3 7.5 VA

### ACCESSORIES:

- DIN rail mounting base
- for details see page 46

3 YEAR WARRANTY

ePLAN



# LCTB 74 - BUSBAR SERIES



INPUT:

**30 A**  
...  
**1000 A**

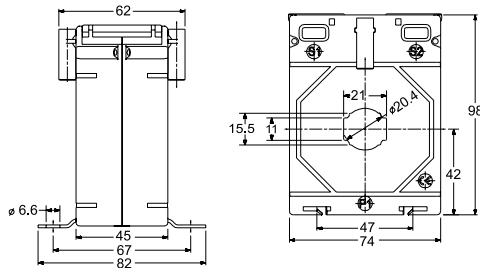
OUTPUTS:

**5 A** **1 A**

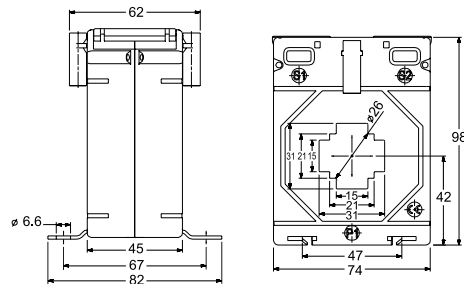
|                   | LCTB 74/20 (45)            | LCTB 74/30 (45)         | LCTB 74/40 (45)          | LCTB 74/50 (45)          |
|-------------------|----------------------------|-------------------------|--------------------------|--------------------------|
| Hole diameter     | ∅ 20 mm                    | ∅26 mm                  | ∅35 mm                   | ∅ 41 mm                  |
| Busbar            | 20x10 mm                   | 30x15 mm,<br>2x20x10 mm | 40x12 mm,<br>2x30 x15 mm | 50x12 mm,<br>2 x40x10 mm |
| Depth             | 45 mm                      | 45 mm                   | 45 mm                    | 45 mm                    |
| Width             | 74 mm                      | 74 mm                   | 74 mm                    | 74 mm                    |
| Primary current   | 30 A...400 A               | 30 A...800 A            | 40 A...1000 A            | 100 A...1000 A           |
| Secondary current | 1 A, 5 A                   |                         |                          |                          |
| Accuracy class    | 0.2S; 0.2; 0.5S; 0.5; 1; 3 |                         |                          |                          |

## DIMENSIONS

LCTB 74/20 (45)



LCTB 74/30 (45)



## ORDERING CODES

LCTB 742045

LCTB 743045

| Secondary current | Code |
|-------------------|------|
| x/5A              | 5    |
| x/1A              | 1    |

| Secondary current | Code |
|-------------------|------|
| x/5A              | 5    |
| x/1A              | 1    |

| Transformer type | LCTB 74/20 (45) |     |      |     |   |   |
|------------------|-----------------|-----|------|-----|---|---|
| Accuracy class   | 0.2S            | 0.2 | 0.5S | 0.5 | 1 | 3 |
| Code             | S               | 2   | R    | -   | - | - |

| Transformer type | LCTB 74/30 (45) |     |      |     |   |   |
|------------------|-----------------|-----|------|-----|---|---|
| Accuracy class   | 0.2S            | 0.2 | 0.5S | 0.5 | 1 | 3 |
| Code             | S               | 2   | R    | -   | - | - |

| Code  | Rated primary current | Transformer burden |        |        |        |         |         | Code |
|-------|-----------------------|--------------------|--------|--------|--------|---------|---------|------|
| 0030A | 30 A                  | -                  | -      | -      | -      | -       | 1.5 VA  | 3    |
| 0040A | 40 A                  | -                  | -      | -      | -      | 1.5 VA  | 2 VA    | 1    |
| 0050A | 50 A                  | -                  | -      | -      | -      | 2.5 VA  | 3.75 VA | 5    |
| 0060A | 60 A                  | -                  | -      | -      | -      | 3.75 VA | 5 VA    |      |
| 0075A | 75 A                  | -                  | -      | -      | 1.5 VA | 5 VA    | 7.5 VA  | 5    |
| 0080A | 80 A                  | -                  | -      | -      | 1.5 VA | 5 VA    | 7.5 VA  |      |
| 0100A | 100 A                 | 1.5 VA             | 1.5 VA | 1.5 VA | 5 VA   | 7.5 VA  | 10 VA   |      |
| 0120A | 120 A                 | 1.5 VA             | 1.5 VA | 1.5 VA | 5 VA   | 10 VA   | 12.5 VA |      |
| 0125A | 125 A                 | 1.5 VA             | 1.5 VA | 1.5 VA | 5 VA   | 10 VA   | 12.5 VA |      |
| 0150A | 150 A                 | 2.5 VA             | 2.5 VA | 2.5 VA | 7.5 VA | 12.5 VA | 15 VA   |      |
| 0200A | 200 A                 | 5 VA               | 5 VA   | 5 VA   | 10 VA  | 15 VA   | 20 VA   |      |
| 0250A | 250 A                 | 5 VA               | 5 VA   | 5 VA   | 10 VA  | 15 VA   | 20 VA   |      |
| 0300A | 300 A                 | 5 VA               | 7.5 VA | 5 VA   | 15 VA  | 15 VA   | 20 VA   |      |
| 0400A | 400 A                 | 5 VA               | 10 VA  | 5 VA   | 15 VA  | 20 VA   | 25 VA   |      |

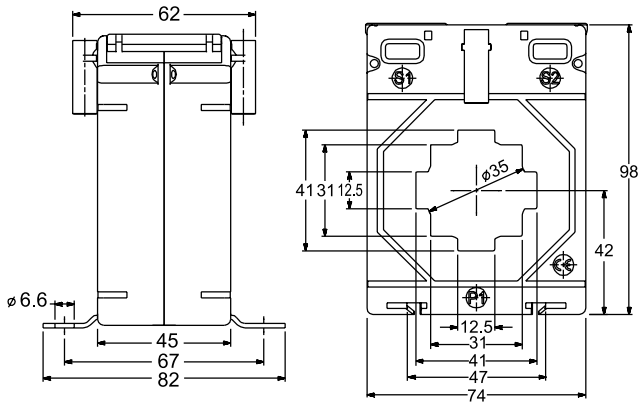
| Code  | Rated primary current | Transformer burden |        |        |        |         |         | Code |
|-------|-----------------------|--------------------|--------|--------|--------|---------|---------|------|
| 0030A | 30 A                  | -                  | -      | -      | -      | -       | 1 VA    | 3    |
| 0040A | 40 A                  | -                  | -      | -      | -      | 1.5 VA  | 1.5 VA  | 1    |
| 0050A | 50 A                  | -                  | -      | -      | -      | 1.5 VA  | 2.5 VA  |      |
| 0060A | 60 A                  | -                  | -      | -      | -      | 2.5 VA  | 3.75 VA | 5    |
| 0075A | 75 A                  | -                  | -      | -      | 1.5 VA | 2.5 VA  | 3.75 VA |      |
| 0080A | 80 A                  | -                  | -      | -      | 1.5 VA | 3.75 VA | 5 VA    |      |
| 0100A | 100 A                 | 1.5 VA             | 1.5 VA | 1.5 VA | 2.5 VA | 5 VA    | 7.5 VA  |      |
| 0120A | 120 A                 | 1.5 VA             | 1.5 VA | 1.5 VA | 2.5 VA | 5 VA    | 7.5 VA  |      |
| 0125A | 125 A                 | 1.5 VA             | 1.5 VA | 1.5 VA | 2.5 VA | 5 VA    | 7.5 VA  |      |
| 0150A | 150 A                 | 1.5 VA             | 1.5 VA | 1.5 VA | 5 VA   | 7.5 VA  | 10 VA   |      |
| 0200A | 200 A                 | 2.5 VA             | 2.5 VA | 2.5 VA | 10 VA  | 15 VA   | 15 VA   |      |
| 0250A | 250 A                 | 2.5 VA             | 2.5 VA | 2.5 VA | 10 VA  | 15 VA   | 15 VA   |      |
| 0300A | 300 A                 | 2.5 VA             | 5 VA   | 2.5 VA | 10 VA  | 15 VA   | 15 VA   |      |
| 0400A | 400 A                 | 5 VA               | 7.5 VA | 5 VA   | 15 VA  | 20 VA   | 25 VA   |      |
| 0500A | 500 A                 | 5 VA               | 10 VA  | 5 VA   | 15 VA  | 20 VA   | 25 VA   |      |
| 0600A | 600 A                 | 5 VA               | 15 VA  | 5 VA   | 15 VA  | 20 VA   | 25 VA   |      |
| 0750A | 750 A                 | 7.5 VA             | 20 VA  | 7.5 VA | 20 VA  | 30 VA   | 30 VA   |      |
| 0800A | 800 A                 | 10 VA              | 30 VA  | 10 VA  | 30 VA  | 30 VA   | 35 VA   |      |

Ordering example: Order code LCTB 7420450100A55 means the transformer LCTB 74/20(45) 100/5A meeting the requirements of the class: kl. 0.5 - 5 VA; kl. 1 - 7.5 VA; kl. 3 - 10 VA

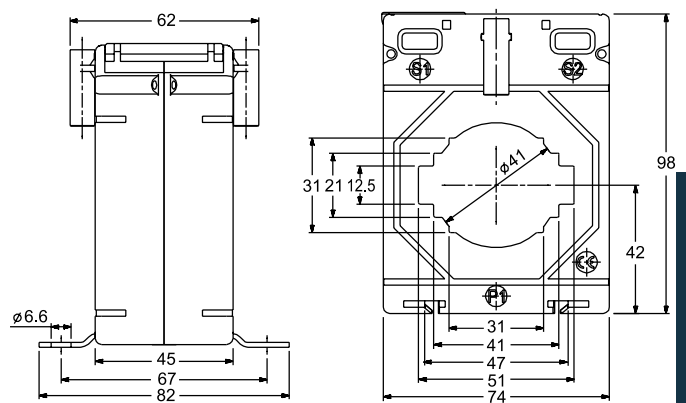
# LCTB 74 - BUSBAR SERIES

## DIMENSIONS

### LCTB 74/40 (45)



### LCTB 74/50 (45)



3 YEAR WARRANTY

## ORDERING CODES

LCTB 744045

LCTB 745045

| Secondary current | Code |
|-------------------|------|
| x/5A              | 5    |
| x/1A              | 1    |

| Secondary current | Code |
|-------------------|------|
| x/5A              | 5    |
| x/1A              | 1    |

| Transformer type | LCTB 74/40 (45) |      |     |      |     |   |   |
|------------------|-----------------|------|-----|------|-----|---|---|
|                  | Accuracy class  | 0.2S | 0.2 | 0.5S | 0.5 | 1 | 3 |
| Code             | S               | 2    | R   | -    | -   | - | - |

| Transformer type | LCTB 74/50 (45) |      |     |      |     |   |   |
|------------------|-----------------|------|-----|------|-----|---|---|
|                  | Accuracy class  | 0.2S | 0.2 | 0.5S | 0.5 | 1 | 3 |
| Code             | S               | 2    | R   | -    | -   | - | - |

| Code  | Rated primary current | Transformer burden |        |        |         |         |         | Code |
|-------|-----------------------|--------------------|--------|--------|---------|---------|---------|------|
|       |                       | 0.2S               | 0.2    | 0.5S   | 0.5     | 1       | 3       |      |
| 0040A | 40 A                  | -                  | -      | -      | -       | 1 VA    | 1 VA    | 1    |
| 0050A | 50 A                  | -                  | -      | -      | -       | 1 VA    | 1.5 VA  |      |
| 0060A | 60 A                  | -                  | -      | -      | -       | 1 VA    | 1.5 VA  |      |
| 0075A | 75 A                  | -                  | -      | -      | -       | 1.5 VA  | 2.5 VA  |      |
| 0080A | 80 A                  | -                  | -      | -      | -       | 1.5 VA  | 2.5 VA  |      |
| 0100A | 100 A                 | 1 VA               | -      | 1 VA   | 1.5 VA  | 2.5 VA  | 3.75 VA |      |
| 0120A | 120 A                 | 1 VA               | -      | 1 VA   | 1.5 VA  | 2.5 VA  | 3.75 VA |      |
| 0125A | 125 A                 | 1 VA               | -      | 1 VA   | 1.5 VA  | 2.5 VA  | 3.75 VA |      |
| 0150A | 150 A                 | 1.5 VA             | -      | 1.5 VA | 2.5 VA  | 3.75 VA | 5 VA    |      |
| 0200A | 200 A                 | 2.5 VA             | 2.5 VA | 2.5 VA | 3.75 VA | 5 VA    | 7.5 VA  |      |
| 0250A | 250 A                 | 5 VA               | 2.5 VA | 5 VA   | 5 VA    | 7.5 VA  | 10 VA   |      |
| 0300A | 300 A                 | 5 VA               | 2.5 VA | 5 VA   | 5 VA    | 7.5 VA  | 10 VA   |      |
| 0400A | 400 A                 | 5 VA               | 5 VA   | 5 VA   | 5 VA*   | 7.5 VA  | 12.5 VA |      |
| 0500A | 500 A                 | 5 VA               | 7.5 VA | 5 VA   | 10 VA   | 15 VA   | 15 VA   |      |
| 0600A | 600 A                 | 5 VA               | 10 VA  | 5 VA   | 15 VA   | 20 VA   | 20 VA   |      |
| 0750A | 750 A                 | 5 VA               | 10 VA  | 5 VA   | 15 VA   | 20 VA   | 20 VA   |      |
| 0800A | 800 A                 | 7.5 VA             | 15 VA  | 7.5 VA | 15 VA   | 20 VA   | 25 VA   |      |
| 1000A | 1000 A                | 10 VA              | 15 VA  | 10 VA  | 15 VA   | 20 VA   | 25 VA   |      |

| Code  | Rated primary current | Transformer burden |        |        |         |         |         | Code |
|-------|-----------------------|--------------------|--------|--------|---------|---------|---------|------|
|       |                       | 0.2S               | 0.2    | 0.5S   | 0.5     | 1       | 3       |      |
| 0100A | 100 A                 | -                  | -      | -      | -       | 1.5 VA  | 2 VA    | 1    |
| 0120A | 120 A                 | -                  | -      | -      | -       | 1.5 VA  | 2.5 VA  |      |
| 0125A | 125 A                 | -                  | -      | -      | -       | 1.5 VA  | 2.5 VA  |      |
| 0150A | 150 A                 | -                  | -      | -      | -       | 2.5 VA  | 3.75 VA |      |
| 0200A | 200 A                 | -                  | -      | -      | 1.5 VA  | 3.75 VA | 5 VA    |      |
| 0250A | 250 A                 | 1.5 VA             | 1.5 VA | 1.5 VA | 2.5 VA  | 5 VA    | 7.5 VA  |      |
| 0300A | 300 A                 | 1.5 VA             | 1.5 VA | 1.5 VA | 5 VA    | 7.5 VA  | 7.5 VA  |      |
| 0400A | 400 A                 | 2.5 VA             | 2.5 VA | 2.5 VA | 5 VA    | 7.5 VA  | 10 VA   |      |
| 0500A | 500 A                 | 5 VA               | 5 VA   | 5 VA   | 7.5 VA  | 10 VA   | 12.5 VA |      |
| 0600A | 600 A                 | 5 VA               | 5 VA*  | 7.5 VA | 5 VA    | 10 VA   | 12.5 VA |      |
| 0750A | 750 A                 | 5 VA               | 10 VA  | 5 VA   | 12.5 VA | 15 VA   | 20 VA   |      |
| 0800A | 800 A                 | 5 VA               | 10 VA  | 5 VA   | 12.5 VA | 15 VA   | 20 VA   |      |
| 1000A | 1000 A                | 5 VA               | 10 VA  | 5 VA   | 12.5 VA | 15 VA   | 20 VA   |      |

\*The custom value of the nominal power, which should be given when ordering the transformer.

\*The custom value of the nominal power, which should be given when ordering the transformer.

**Ordering example:** Order code LCTB 7450450300A55 means the transformer LCTB 74/50(45) 300/5A meeting the requirements of the class: kl. 0.5 - 5 VA; kl. 1 - 7.5 VA; kl. 3 - 7.5 VA

### ACCESSORIES:

DIN rail mounting base

Order code: LH000-0904-130-124

# LCTB 86 - BUSBAR SERIES



INPUT:

**50 A**  
...  
**1600 A**

OUTPUTS:

**5 A** **1 A**



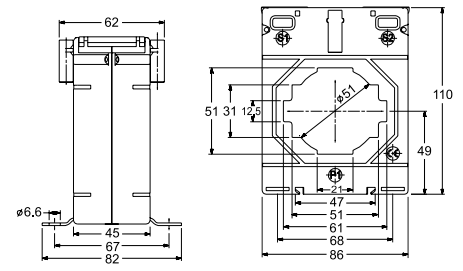
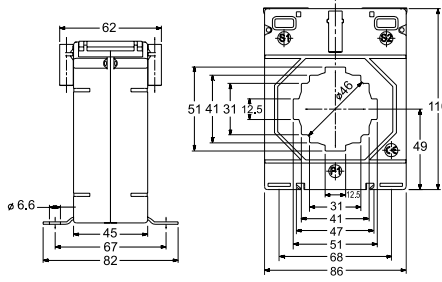
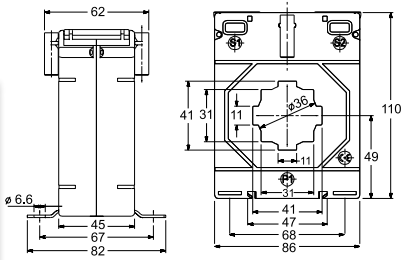
|                   | LCTB 86/40 (45)            | LCTB 86/50 (45)               | LCTB 86/60 (45)               |
|-------------------|----------------------------|-------------------------------|-------------------------------|
| Hole diameter     | ∅ 36 mm                    | ∅ 46 mm                       | ∅ 51 mm                       |
| Busbar            | 40 x 10 mm,<br>2x30x15mm   | 50 x 12 mm,<br>2 x 40 x 15 mm | 60 x 12 mm,<br>2 x 50 x 15 mm |
| Depth             | 45 mm                      | 45 mm                         | 45 mm                         |
| Width             | 86 mm                      | 86 mm                         | 86 mm                         |
| Primary current   | 50 A...1000 A              | 100 A...1250 A                | 100 A...1600 A                |
| Secondary current | 1 A, 5 A                   |                               |                               |
| Accuracy class    | 0.25; 0.2; 0.55; 0.5; 1; 3 |                               |                               |

## DIMENSIONS

LCTB 86/40 (45)

LCTB 86/50 (45)

LCTB 86/60 (45)



## ORDERING CODES

**LCTB 864045** □ □ □ □ □ □ □ □

| Secondary current | Code     |
|-------------------|----------|
| x/5A              | <b>5</b> |
| x/1A              | <b>1</b> |

| Transformer type | LCTB 86/40 (45) |          |          |      |     |   |   |
|------------------|-----------------|----------|----------|------|-----|---|---|
|                  | Accuracy class  | 0.25     | 0.2      | 0.55 | 0.5 | 1 | 3 |
| <b>Code</b>      | <b>S</b>        | <b>2</b> | <b>R</b> | -    | -   | - | - |

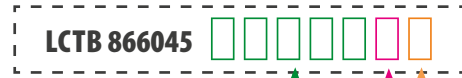
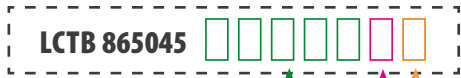
| Code  | Primary current | Transformer burden |         |        |         |         |         | Code     |
|-------|-----------------|--------------------|---------|--------|---------|---------|---------|----------|
|       |                 | 0.25               | 0.2     | 0.55   | 0.5     | 1       | 3       |          |
| 0050A | 50 A            | -                  | -       | -      | -       | 1.5 VA  | 1.5 VA  | <b>1</b> |
| 0060A | 60 A            | -                  | -       | -      | -       | 1.5 VA  | 2 VA    |          |
| 0075A | 75 A            | -                  | -       | -      | -       | 2.5 VA  | 3.75 VA |          |
| 0080A | 80 A            | -                  | -       | -      | -       | 2.5 VA  | 3.75 VA |          |
| 0100A | 100 A           | 1.5 VA             | 1.5 VA  | 1.5 VA | 1.5 VA  | 3.75 VA | 5 VA    | <b>5</b> |
| 0120A | 120 A           | 1.5 VA             | 1.5 VA  | 1.5 VA | 2.5 VA  | 5 VA    | 7.5 VA  |          |
| 0125A | 125 A           | 1.5 VA             | 1.5 VA  | 1.5 VA | 2.5 VA  | 5 VA    | 7.5 VA  |          |
| 0150A | 150 A           | 2.5 VA             | 2.5 VA  | 2.5 VA | 3.75 VA | 5 VA    | 7.5 VA  |          |
| 0200A | 200 A           | 5 VA               | 2.5 VA  | 5 VA   | 5 VA    | 7.5 VA  | 10 VA   |          |
| 0250A | 250 A           | 10 VA              | 3.75 VA | 10 VA  | 7.5 VA  | 12.5 VA | 15 VA   |          |
| 0300A | 300 A           | 10 VA              | 5 VA    | 10 VA  | 10 VA   | 15 VA   | 20 VA   |          |
| 0400A | 400 A           | 10 VA              | 7.5 VA  | 10 VA  | 15 VA   | 20 VA   | 25 VA   |          |
| 0500A | 500 A           | 5 VA               | 10 VA   | 5 VA   | 20 VA   | 30 VA   | 35 VA   |          |
| 0600A | 600 A           | 7.5 VA             | 15 VA   | 7.5 VA | 30 VA   | 30 VA   | 35 VA   |          |
| 0750A | 750 A           | 7.5 VA             | 15 VA   | 7.5 VA | 30 VA   | 30 VA   | 35 VA   |          |
| 0800A | 800 A           | 10 VA              | 15 VA   | 15 VA  | 30 VA   | 30 VA   | 35 VA   |          |
| 1000A | 1000 A          | 10 VA              | 15 VA   | 15 VA  | 30 VA   | 30 VA   | 35 VA   |          |

**Ordering example:** Order code LCTB 8640450100A55 means the transformer LCTB 86/40(45) 100/5A meeting the requirements of the class:

- kl. 0.5    1.5 VA
- kl. 1     3.75 VA
- kl. 3     5 VA



## ORDERING CODES



| Secondary current | Code |
|-------------------|------|
| x/5A              | 5    |
| x/1A              | 1    |

| Secondary current | Code |
|-------------------|------|
| x/5A              | 5    |
| x/1A              | 1    |

| Transformer type | LCTB 86/50 (45) |     |      |     |   |   |
|------------------|-----------------|-----|------|-----|---|---|
| Accuracy class   | 0.2S            | 0.2 | 0.5S | 0.5 | 1 | 3 |
| Code             | S               | 2   | R    | -   | - | - |

| Transformer type | LCTB 86/60 (45) |     |      |     |   |   |
|------------------|-----------------|-----|------|-----|---|---|
| Accuracy class   | 0.2S            | 0.2 | 0.5S | 0.5 | 1 | 3 |
| Code             | S               | 2   | R    | -   | - | - |

| Code  | Primary current | Transformer burden |         |         |        |        |         | Code |
|-------|-----------------|--------------------|---------|---------|--------|--------|---------|------|
|       |                 | 0.2S               | 0.2     | 0.5S    | 0.5    | 1      | 3       |      |
| 0100A | 100 A           | -                  | -       | -       | 1 VA   | 1.5 VA | 2.5 VA  | 5    |
| 0120A | 120 A           | -                  | -       | -       | 1.5 VA | 2.5 VA | 3.75 VA |      |
| 0125A | 125 A           | -                  | -       | -       | 1.5 VA | 2.5 VA | 3.75 VA |      |
| 0150A | 150 A           | -                  | -       | -       | 2.5 VA | 5 VA   | 7.5 VA  |      |
| 0200A | 200 A           | -                  | -       | -       | 5 VA   | 7.5 VA | 10 VA   |      |
| 0250A | 250 A           | -                  | -       | -       | 7.5 VA | 10 VA  | 12.5 VA |      |
| 0300A | 300 A           | 5 VA               | 1.5 VA  | 5 VA    | 7.5 VA | 10 VA  | 15 VA   |      |
| 0400A | 400 A           | 7.5 VA             | 2.5 VA  | 7.5 VA  | 15 VA  | 15 VA  | 20 VA   |      |
| 0500A | 500 A           | 7.5 VA             | 5 VA    | 7.5 VA  | 15 VA  | 20 VA  | 20 VA   |      |
| 0600A | 600 A           | 10 VA              | 7.5 VA  | 10 VA   | 15 VA  | 20 VA  | 20 VA   |      |
| 0750A | 750 A           | 7.5 VA             | 10 VA   | 7.5 VA  | 15 VA  | 20 VA  | 25 VA   |      |
| 0800A | 800 A           | 10 VA              | 12.5 VA | 10 VA   | 20 VA  | 30 VA  | 30 VA   |      |
| 1000A | 1000 A          | 12.5 VA            | 20 VA   | 12.5 VA | 30 VA  | 30 VA  | 35 VA   |      |
| 1200A | 1200 A          | 12.5 VA            | 20 VA   | 12.5 VA | 30 VA  | 30 VA  | 35 VA   |      |
| 1250A | 1250 A          | 12.5 VA            | 20 VA   | 12.5 VA | 30 VA  | 30 VA  | 35 VA   |      |

| Code  | Primary current | Transformer burden |         |         |        |         |         | Code |
|-------|-----------------|--------------------|---------|---------|--------|---------|---------|------|
|       |                 | 0.2S               | 0.2     | 0.5S    | 0.5    | 1       | 3       |      |
| 0100A | 100 A           | -                  | -       | -       | -      | 1 VA    | 1.5 VA  | 1    |
| 0120A | 120 A           | -                  | -       | -       | -      | 1.5 VA  | 2.5 VA  |      |
| 0125A | 125 A           | -                  | -       | -       | -      | 2.5 VA  | 3.75 VA |      |
| 0150A | 150 A           | -                  | -       | -       | -      | 2.5 VA  | 3.75 VA |      |
| 0200A | 200 A           | -                  | -       | -       | 1.5 VA | 3.75 VA | 5 VA    |      |
| 0250A | 250 A           | -                  | -       | -       | 2.5 VA | 5 VA    | 7.5 VA  |      |
| 0300A | 300 A           | 1.5 VA             | 1.5 VA  | 1.5 VA  | 5 VA   | 7.5 VA  | 10 VA   |      |
| 0400A | 400 A           | 2.5 VA             | 2.5 VA  | 3.75 VA | 10 VA  | 12.5 VA | 15 VA   |      |
| 0500A | 500 A           | 2.5 VA             | 3.75 VA | 2.5 VA  | 10 VA  | 12.5 VA | 15 VA   |      |
| 0600A | 600 A           | 5 VA               | 5 VA    | 5 VA    | 15 VA  | 15 VA   | 20 VA   |      |
| 0750A | 750 A           | 5 VA               | 10 VA   | 5 VA    | 15 VA  | 20 VA   | 25 VA   |      |
| 0800A | 800 A           | 7.5 VA             | 12.5 VA | 7.5 VA  | 20 VA  | 20 VA   | 25 VA   |      |
| 1000A | 1000 A          | 10 VA              | 15 VA   | 10 VA   | 20 VA  | 20 VA   | 25 VA   |      |
| 1200A | 1200 A          | 10 VA              | 15 VA   | 10 VA   | 20 VA  | 20 VA   | 25 VA   |      |
| 1250A | 1250 A          | 10 VA              | 15 VA   | 10 VA   | 20 VA  | 20 VA   | 25 VA   |      |
| 1500A | 1500 A          | 10 VA              | 15 VA   | 10 VA   | 20 VA  | 20 VA   | 25 VA   |      |
| 1600A | 1600 A          | 10 VA              | 15 VA   | 10 VA   | 20 VA  | 20 VA   | 25 VA   |      |

**Ordering example:** Order code LCTB 8650450300A55 means the transformer LCTB 86/50(45) 300/5A meeting the requirements of the class:

- kl. 0.5 7.5 VA
- kl. 1 10 VA
- kl. 3 15 VA

**ACCESSORIES:**  
DIN rail mounting base  
Order code: LH000-0904-130-124

3 YEAR WARRANTY

ePLAN





# LCTB 140 - BUSBAR SERIES



INPUT:

200 A  
...  
5000 A

OUTPUTS:

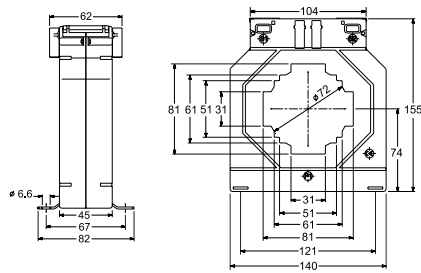
5 A 1 A



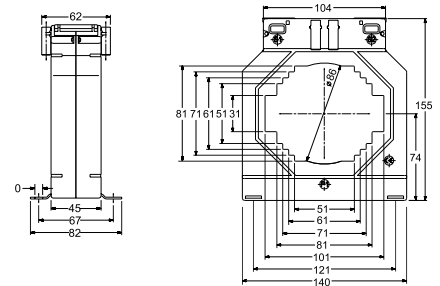
|                   | LCTB 140/80 (45)              | LCTB 140/100H (45)                                | LCTB 140/100V (45)                                | LCTB 140/130V (45) |
|-------------------|-------------------------------|---|---|--------------------|
| Hole diameter     | Ø 72 mm                       | Ø 86 mm   | Ø 86 mm   | -                  |
| Busbar            | 80 x 30 mm,<br>2 x 60 x 25 mm | 100 x 30 mm,<br>2 x 80 x 25 mm,<br>2 x 70 x 30 mm | 100 x 30 mm,<br>2 x 80 x 25 mm,<br>2 x 70 x 30 mm | 70 x 130 mm        |
| Depth             | 45 mm                         | 45 mm   | 45 mm   | 45 mm              |
| Width             | 140 mm                        | 140 mm  | 140 mm  | 140 mm             |
| Primary current   | 200 A...2000 A                | 200 A...4000 A                                    | 200 A...3000 A                                    | 400 A...5000 A     |
| Secondary current | 1 A, 5 A                      |   |   |                    |
| Accuracy class    | 0.2S; 0.2; 0.5S; 0.5; 1       |   |   | 0.2; 0.5; 1        |

## DIMENSIONS

LCTB 140/80 (45)



LCTB 140/100H (45)



## ORDERING CODES

LCTB 140804

LCTB 14010H

| Secondary current | Code |
|-------------------|------|
| x/5A              | 5    |
| x/1A              | 1    |

| Secondary current | Code |
|-------------------|------|
| x/5A              | 5    |
| x/1A              | 1    |

| Transformer type | LCTB 140/80 (45) |     |      |     |   |   |
|------------------|------------------|-----|------|-----|---|---|
| Accuracy class   | 0.2S             | 0.2 | 0.5S | 0.5 | 1 | 3 |
| Code             | S                | 2   | R    | -   | - | - |

| Transformer type | LCTB 140/100H (45) |     |      |     |   |   |
|------------------|--------------------|-----|------|-----|---|---|
| Accuracy class   | 0.2S               | 0.2 | 0.5S | 0.5 | 1 | 3 |
| Code             | S                  | 2   | R    | -   | - | - |

| Code  | Rated primary current | Transformer burden |        |         |        |       |         | Code |
|-------|-----------------------|--------------------|--------|---------|--------|-------|---------|------|
| 0200A | 200 A                 | -                  | -      | -       | 2.5 VA | 5 VA  | 7.5 VA  | 5    |
| 0250A | 250 A                 | -                  | -      | -       | 5 VA   | 10 VA | 12.5 VA |      |
| 0300A | 300 A                 | -                  | 1.5 VA | -       | 7.5 VA | 15 VA | 15 VA   |      |
| 0400A | 400 A                 | -                  | 2.5 VA | -       | 10 VA  | 20 VA | 25 VA   |      |
| 0500A | 500 A                 | 2.5 VA             | 5 VA   | 2.5 VA  | 15 VA  | 30 VA | 30 VA   |      |
| 0600A | 600 A                 | 3.75 VA            | 7.5 VA | 3.75 VA | 15 VA  | 30 VA | 35 VA   |      |
| 0750A | 750 A                 | 5 VA               | 10 VA  | 5 VA    | 15 VA  | 45 VA | 45 VA   |      |
| 0800A | 800 A                 | 5 VA               | 10 VA  | 5 VA    | 15 VA  | 45 VA | 50 VA   |      |
| 1000A | 1000 A                | 10 VA              | 15 VA  | 10 VA   | 30 VA  | 60 VA | 60 VA   |      |
| 1200A | 1200 A                | 12.5 VA            | 15 VA  | 12.5 VA | 30 VA  | 60 VA | 60 VA   |      |
| 1250A | 1250 A                | 12.5 VA            | 30 VA  | 12.5 VA | 60 VA  | 60 VA | 60 VA   |      |
| 1500A | 1500 A                | 15 VA              | 30 VA  | 15 VA   | 60 VA  | 60 VA | 60 VA   |      |
| 1600A | 1600 A                | 15 VA              | 30 VA  | 15 VA   | 60 VA  | 60 VA | 60 VA   |      |
| 2000A | 2000 A                | 15 VA              | 30 VA  | 15 VA   | 60 VA  | 60 VA | 60 VA   |      |

| Code  | Rated primary current | Transformer burden |         |        |         |         |         | Code |
|-------|-----------------------|--------------------|---------|--------|---------|---------|---------|------|
| 0200A | 200 A                 | -                  | -       | -      | 1.5 VA  | 3.75 VA | 5 VA    | 5    |
| 0250A | 250 A                 | -                  | -       | -      | 2.5 VA  | 5 VA    | 7.5 VA  |      |
| 0300A | 300 A                 | -                  | -       | -      | 3.75 VA | 7.5 VA  | 10 VA   |      |
| 0400A | 400 A                 | -                  | 1.5 VA  | -      | 7.5 VA  | 10 VA   | 12.5 VA |      |
| 0500A | 500 A                 | -                  | 2.5 VA  | -      | 10 VA   | 12.5 VA | 12.5 VA |      |
| 0600A | 600 A                 | 2.5 VA             | 3.75 VA | 2.5 VA | 10 VA   | 15 VA   | 15 VA   |      |
| 0750A | 750 A                 | 5 VA               | 5 VA    | 5 VA   | 15 VA   | 20 VA   | 20 VA   |      |
| 0800A | 800 A                 | 5 VA               | 5 VA    | 5 VA   | 15 VA   | 20 VA   | 25 VA   |      |
| 1000A | 1000 A                | 5 VA               | 10 VA   | 5 VA   | 15 VA   | 20 VA   | 25 VA   |      |
| 1200A | 1200 A                | 10 VA              | 15 VA   | 10 VA  | 15 VA   | 30 VA   | 30 VA   |      |
| 1250A | 1250 A                | 10 VA              | 15 VA   | 10 VA  | 15 VA   | 30 VA   | 35 VA   |      |
| 1500A | 1500 A                | 15 VA              | 20 VA   | 15 VA  | 20 VA   | 30 VA   | 40 VA   |      |
| 1600A | 1600 A                | 15 VA              | 20 VA   | 15 VA  | 20 VA   | 45 VA   | 45 VA   |      |
| 2000A | 2000 A                | 15 VA              | 30 VA   | 15 VA  | 45 VA   | 45 VA   | 45 VA   |      |
| 2500A | 2500 A                | 15 VA              | 30 VA   | 15 VA  | 45 VA   | 45 VA   | 45 VA   |      |
| 3000A | 3000 A                | 15 VA              | 30 VA   | 15 VA  | 60 VA   | 60 VA   | 60 VA   |      |
| 4000A | 4000 A                | 15 VA              | 30 VA   | 15 VA  | 60 VA   | 60 VA   | 60 VA   |      |

Ordering example: Order code LCTB 1408041500A55 means the transformer LCTB 140/80(45) 1500/5A meeting the requirements of the class: kl. 0.5 - 60 VA; kl. 1 - 60 VA; kl. 3 - 60 VA

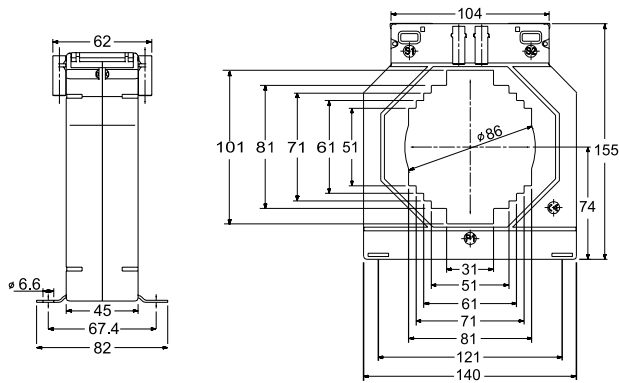
3 YEAR WARRANTY

ePLAN

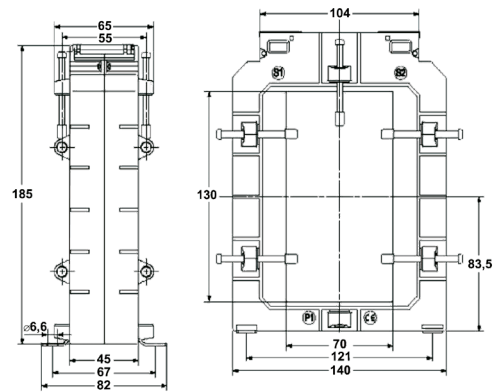


## DIMENSIONS

### LCTB 140/100V (45)



### LCTB 140/130V (45)



## ORDERING CODES

LCTB 14010V                        

| Secondary current | Code |
|-------------------|------|
| x/5A              | 5    |
| x/1A              | 1    |

| Transformer type | LCTB 140/100V (45) |      |     |      |     |   |   |
|------------------|--------------------|------|-----|------|-----|---|---|
|                  | Accuracy class     | 0.2S | 0.2 | 0.5S | 0.5 | 1 | 3 |
| Code             | S                  | 2    | R   | -    | -   | - | - |

LCTB 140130                        

| Secondary current | Code |
|-------------------|------|
| x/5A              | 5    |
| x/1A              | 1    |

| Transformer type | LCTB 140/130V (45) |     |     |   |   |
|------------------|--------------------|-----|-----|---|---|
|                  | Accuracy class     | 0.2 | 0.5 | 1 | 3 |
| Code             | 2                  | -   | -   | - | - |

| Code  | Rated primary current | Transformer burden |         |        |         |         |         | Code |
|-------|-----------------------|--------------------|---------|--------|---------|---------|---------|------|
| 0200A | 200 A                 | -                  | -       | -      | 1.5 VA  | 3.75 VA | 5 VA    | 5    |
| 0250A | 250 A                 | -                  | -       | -      | 2.5 VA  | 5 VA    | 5 VA    |      |
| 0300A | 300 A                 | -                  | -       | -      | 3.75 VA | 7.5 VA  | 10 VA   |      |
| 0400A | 400 A                 | -                  | 1.5 VA  | -      | 10 VA   | 10 VA   | 12.5 VA |      |
| 0500A | 500 A                 | -                  | 2.5 VA  | -      | 10 VA   | 12.5 VA | 12.5 VA |      |
| 0600A | 600 A                 | 2.5VA              | 3.75 VA | 2.5 VA | 12.5 VA | 15 VA   | 15 VA   |      |
| 0750A | 750 A                 | 5 VA               | 5 VA    | 5 VA   | 15 VA   | 20 VA   | 20 VA   |      |
| 0800A | 800 A                 | 5 VA               | 5 VA    | 5 VA   | 15 VA   | 20 VA   | 20 VA   |      |
| 1000A | 1000 A                | 5 VA               | 10 VA   | 5 VA   | 15 VA   | 20 VA   | 20 VA   |      |
| 1200A | 1200 A                | 10 VA              | 15VA    | 10 VA  | 15 VA   | 30 VA   | 30 VA   |      |
| 1250A | 1250 A                | 10 VA              | 15 VA   | 10 VA  | 15 VA   | 30 VA   | 30 VA   |      |
| 1500A | 1500 A                | 15VA               | 20 VA   | 15 VA  | 30 VA   | 30 VA   | 35 VA   |      |
| 1600A | 1600 A                | 15VA               | 20 VA   | 15 VA  | 45 VA   | 45 VA   | 45 VA   |      |
| 2000A | 2000 A                | 15VA               | 30 VA   | 15 VA  | 45 VA   | 45 VA   | 45 VA   |      |
| 2500A | 2500 A                | 15VA               | 30VA    | 15 VA  | 45 VA   | 45VA    | 45 VA   |      |
| 3000A | 3000 A                | 15VA               | 30 VA   | 15 VA  | 60 VA   | 60 VA   | 60 VA   |      |

| Code  | Rated primary current | Transformer burden |         |        |         | Code |
|-------|-----------------------|--------------------|---------|--------|---------|------|
| 0400A | 400 A                 | -                  | 3.75 VA | 5 VA   | 6.25 VA | 5    |
| 0500A | 500 A                 | -                  | 3.75 VA | 5VA    | 7.5 VA  |      |
| 0600A | 600 A                 | -                  | 3.75 VA | 5 VA   | 7.5 VA  |      |
| 0750A | 750 A                 | -                  | 5 VA    | 7.5 VA | 10 VA   |      |
| 0800A | 800 A                 | -                  | 5 VA    | 7.5 VA | 10 VA   |      |
| 1000A | 1000 A                | 5 VA               | 10 VA   | 10 VA  | 15 VA   |      |
| 1200A | 1200 A                | 7.5 VA             | 10 VA   | 15 VA  | 20 VA   |      |
| 1250A | 1250 A                | 7.5 VA             | 10 VA   | 15 VA  | 20 VA   |      |
| 1500A | 1500 A                | 10VA               | 15 VA   | 15 VA  | 20 VA   |      |
| 1600A | 1600 A                | 10 VA              | 15 VA   | 15 VA  | 20 VA   |      |
| 2000A | 2000 A                | 15 VA              | 20 VA   | 20 VA  | 20 VA   |      |
| 2500A | 2500 A                | 15 VA              | 20 VA   | 20 VA  | 25 VA   |      |
| 3000A | 3000 A                | 15 VA              | 20 VA   | 20 VA  | 25 VA   |      |
| 4000A | 4000 A                | 15 VA              | 20 VA   | 20 VA  | 35 VA   |      |
| 5000A | 5000 A                | 15 VA              | 20 VA   | 20 VA  | 35 VA   |      |

Ordering example: Order code LCTB 14010V1000A55 means the transformer LCTB 140/100V(45) 1000/5A meeting the requirements of the class:

- kl. 0.5 15 VA
- kl. 1 20 VA
- kl. 3 20 VA

3 YEAR WARRANTY

ePLAN



# LCTS - SPLIT CORE SERIES

|                       | LCTS 93/30SC (40) | LCTS 125/50SC (40) | LCTS 155/80SC (40) | LCTS 195/80SC (64) |
|-----------------------|-------------------|--------------------|--------------------|--------------------|
| Window dimensions     | 23 x 33 mm        | 85 x 54 mm         | 85 x 125 mm        | 82 x 162 mm        |
| Depth                 | 40 mm             | 40 mm              | 40 mm              | 64 mm              |
| Width                 | 93 mm             | 125 mm             | 155 mm             | 195 mm             |
| Rated primary current | 100 A...400 A     | 250 A...1000 A     | 250 A...3000 A     | 500 A...5000 A     |
| Secondary current     | 1 A, 5 A          |                    |                    |                    |
| Accuracy class        | 0.5; 1            |                    |                    |                    |

INPUT:

100 A  
...  
5000 A



OUTPUTS:

5 A 1 A

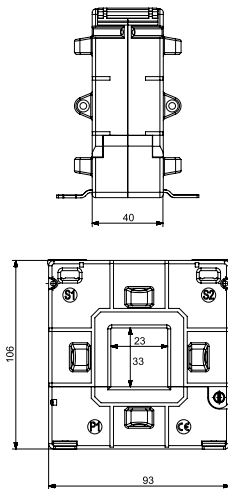


3 YEAR WARRANTY

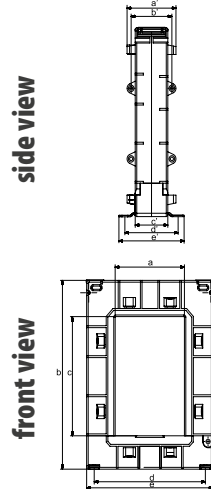
ePLAN

## DIMENSIONS

### LCTS 93/30SC (40)



### LCTS 125/50SC, 155/80SC, 195/80SC

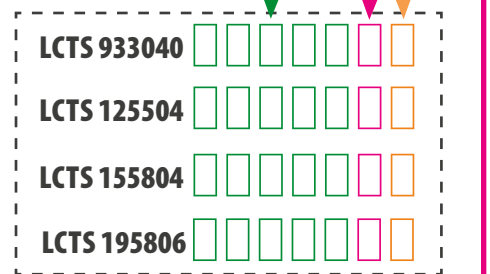


| Type          | a' | b' | c' | d' | e'  |
|---------------|----|----|----|----|-----|
| 125/50SC (40) | 60 | 50 | 40 | 65 | 80  |
| 155/80SC (40) | 60 | 50 | 40 | 65 | 80  |
| 195/80SC (64) | 84 | 74 | 64 | 80 | 100 |

| Type          | a  | b   | c   | d   | e   |
|---------------|----|-----|-----|-----|-----|
| 125/50SC (40) | 54 | 158 | 85  | 106 | 125 |
| 155/80SC (40) | 85 | 198 | 125 | 136 | 155 |
| 195/80SC (64) | 80 | 245 | 160 | 179 | 195 |

## ORDERING CODES

| Code  | Primary current | Transformer burden |         |                    |         |                    |         |                    |       |
|-------|-----------------|--------------------|---------|--------------------|---------|--------------------|---------|--------------------|-------|
|       |                 | LCTS 93/30SC (40)  |         | LCTS 125/50SC (40) |         | LCTS 155/80SC (40) |         | LCTS 195/80SC (64) |       |
| 0100A | 100 A           | -                  | 1.5 VA  | -                  | -       | -                  | -       | -                  | -     |
| 0150A | 150 A           | -                  | 1.75 VA | -                  | -       | -                  | -       | -                  | -     |
| 0200A | 200 A           | -                  | 2.5 VA  | -                  | -       | -                  | -       | -                  | -     |
| 0250A | 250 A           | -                  | 3.75 VA | 1 VA               | 2.5 VA  | 1 VA               | 2.5 VA  | -                  | -     |
| 0300A | 300 A           | 2.5 VA             | 5 VA    | 2.5 VA             | 3.75 VA | 1.5 VA             | 3.75 VA | -                  | -     |
| 0400A | 400 A           | 3.75 VA            | 6.25 VA | 2.5 VA             | 3.75 VA | 2.5 VA             | 3.75 VA | -                  | -     |
| 0500A | 500 A           | -                  | -       | 3.75 VA            | 5 VA    | 3.75 VA            | 5 VA    | 1.25 VA            | 5 VA  |
| 0600A | 600 A           | -                  | -       | 5 VA               | 7.5 VA  | 5 VA               | 7.5 VA  | 1.25 VA            | 5 VA  |
| 0750A | 750 A           | -                  | -       | 7.5 VA             | 10 VA   | 7.5 VA             | 10 VA   | 5 VA               | 10 VA |
| 0800A | 800 A           | -                  | -       | 7.5 VA             | 10 VA   | 7.5 VA             | 10 VA   | 7.5 VA             | 10 VA |
| 1000A | 1000 A          | -                  | -       | 10 VA              | 15 VA   | 10 VA              | 15 VA   | 10 VA              | 20 VA |
| 1200A | 1200 A          | -                  | -       | -                  | -       | 15 VA              | 30 VA   | 15 VA              | 20 VA |
| 1250A | 1250 A          | -                  | -       | -                  | -       | 15 VA              | 30 VA   | 15 VA              | 20 VA |
| 1500A | 1500 A          | -                  | -       | -                  | -       | 20 VA              | 45 VA   | 20 VA              | 30 VA |
| 1600A | 1600 A          | -                  | -       | -                  | -       | 20 VA              | 45 VA   | 20 VA              | 30 VA |
| 2000A | 2000 A          | -                  | -       | -                  | -       | 20 VA              | 45 VA   | 25 VA              | 30 VA |
| 2500A | 2500 A          | -                  | -       | -                  | -       | 25 VA              | 45 VA   | 25 VA              | 30 VA |
| 3000A | 3000 A          | -                  | -       | -                  | -       | 30 VA              | 45 VA   | 30 VA              | 45 VA |
| 4000A | 4000 A          | -                  | -       | -                  | -       | -                  | -       | 30 VA              | 45 VA |
| 5000A | 5000 A          | -                  | -       | -                  | -       | -                  | -       | 30 VA              | 45 VA |



| Secondary current | Code |
|-------------------|------|
| x/5A              | 5    |
| x/1A              | 1    |

Ordering example: Order code LCTS 9330400300A55 means the transformer LCTS 93/30SC(40) 300/5A ; Class 0.5; power 2.5VA

# LCTS - SPLIT CORE SERIES | COMPACT VERSION

NEW



INPUT:

150 A  
...  
500 A

OUTPUTS:

5 A 1 A



|                   | LCTS 50/18SC  | LCTS 50/32SC  |
|-------------------|---------------|---------------|
| Hole diameter     | 18.5 mm       | 32.5 mm       |
| Depth             | 65.2 mm       | 65.2 mm       |
| Width             | 61.4 mm       | 61.4 mm       |
| Primary current   | 150 A...250 A | 250 A...500 A |
| Secondary current | 1 A, 5 A      |               |
| Accuracy class    | 1             |               |

3 YEAR WARRANTY

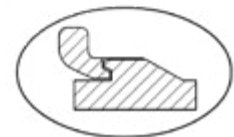
## GENERAL SPECIFICATION:

|  |                        |
|--|------------------------|
| Applicable standards:                                      | IEC 61869-1/2          |
| Thermal nominal continuous rated current ( $I_{cth}$ ):    | 1.2 x $I_n$            |
| Thermal nominal short time current ( $I_{dyn}$ ):          | 60 x $I_n$ , 1 sek     |
| Maximum Operating Voltage:                                 | 0.72 kV                |
| Rated Frequency:   | 50/60 Hz               |
| Insulation Test Voltage:                                   | 3 kV, 1 Min.           |
| Insulation Class:  | E                      |
| Ambient temperature range:                                 | -20°C ... +45°C        |
| Storage temperature range:                                 | -30°C ... +60°C        |
| Ratios ranging:  | from 150/1 up to 500/5 |
| Accuracy Class:  | 1                      |
| Suitable only for mounting on insulated primary conductor. |                        |
| To be used in weather protected & dry location.            |                        |



## FEATURES:

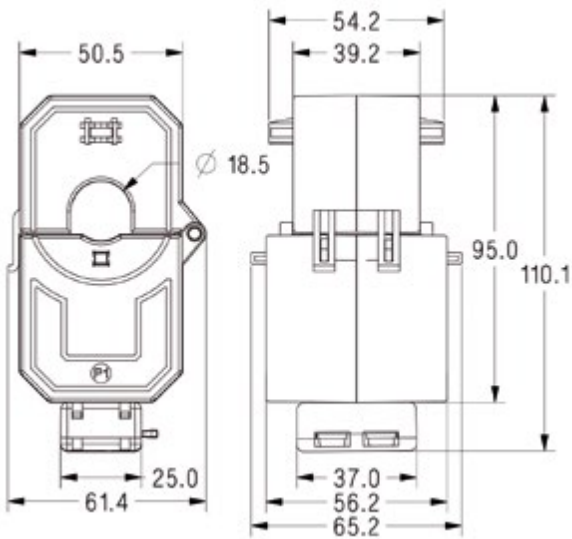
- Hinged Split Core.
- Swing open for ease of installation.
- Compact size.
- Two options for Bus Bar Mounting.
- Cable Tie provision for faster installation.
- Safety Plug in shorting link.
- Available with M4 Size Terminals.
- Provided with 3 Meter wire for 1A Output.
- Provided with 1 Meter wire for 5A Output.
- Wide range of system current ratings.
- Assured Core contact with Latching Type Snap fitment.
- Vibration Resistant Design.



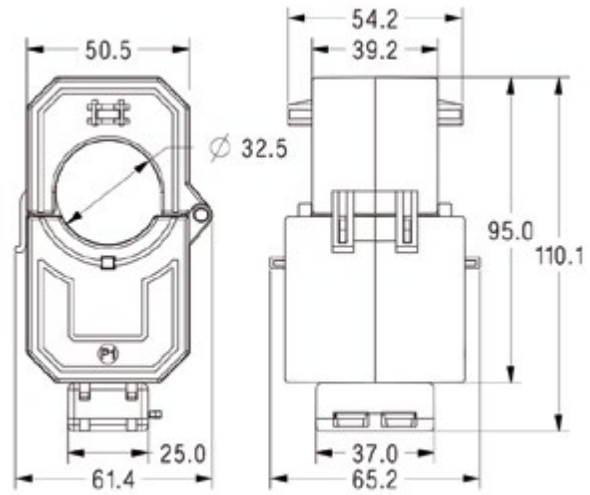
Locking Profile to avoid Accidental Opening.

## DIMENSIONS

### LCTS 50/18SC



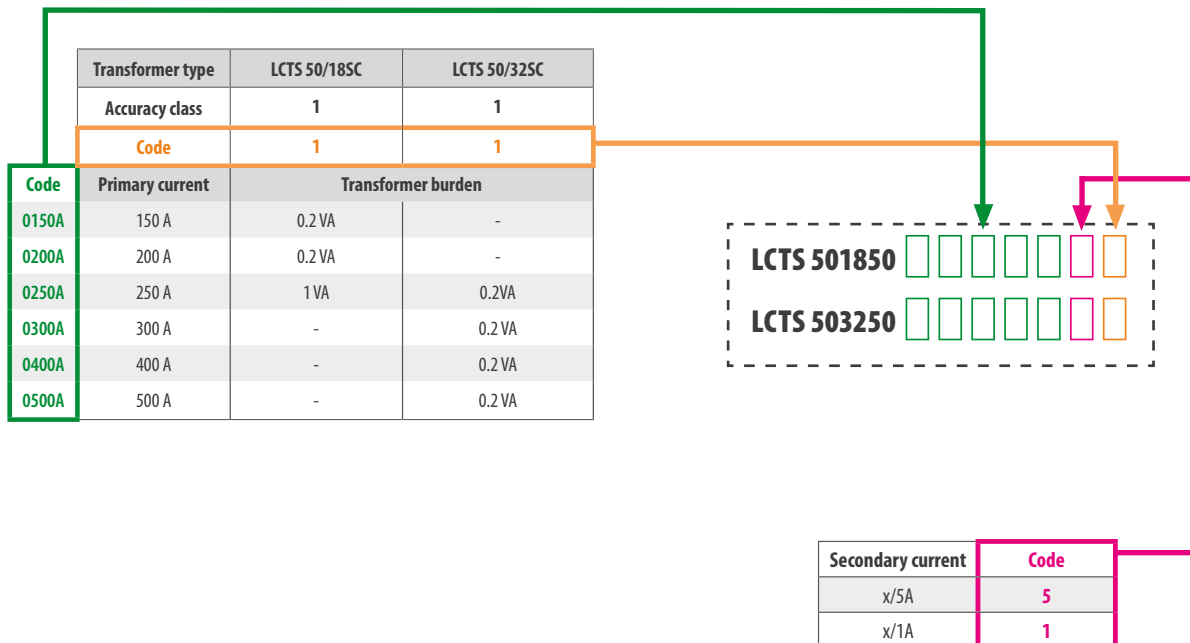
### LCTS 50/32SC



3 YEAR WARRANTY

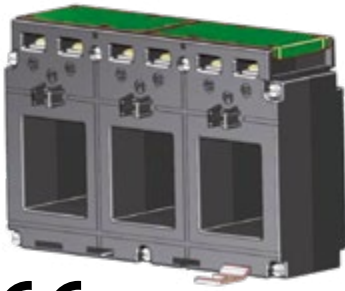
ePLAN

## ORDERING CODES



**Ordering example:** Order code a LCTS 5032500500A5 means the transformer LCTS 50/32SC 500/5A ; Class 1; power 0.2VA

# LCTP - 3-PHASE BUSBAR SERIES



INPUT:

100 A  
...  
500 A

OUTPUT:

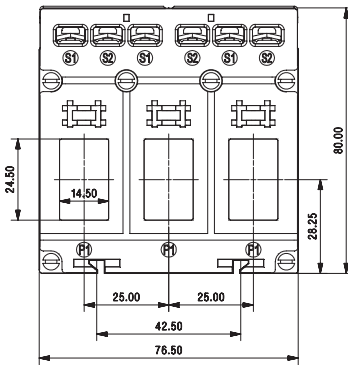
5 A 1 A



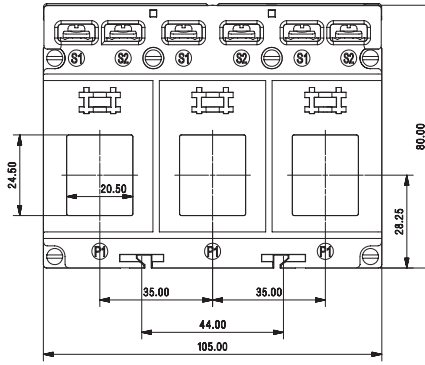
|                   | LCTP 75/15 (60) | LCTP 105/21 (40) | LCTP 140/31 (40) |
|-------------------|-----------------|------------------|------------------|
| Busbar            | 14 x 24 mm      | 20 x 24 mm       | 31 x 36 mm       |
| Depth             | 60 mm           | 40 mm            | 40 mm            |
| Width             | 76.5 mm         | 105 mm           | 140 mm           |
| Primary current   | 100...160 A     | 100...250 A      | 250...500 A      |
| Secondary current | 5 A; 1 A        |                  |                  |
| Accuracy class    | 0.5; 1          |                  |                  |

## DIMENSIONS

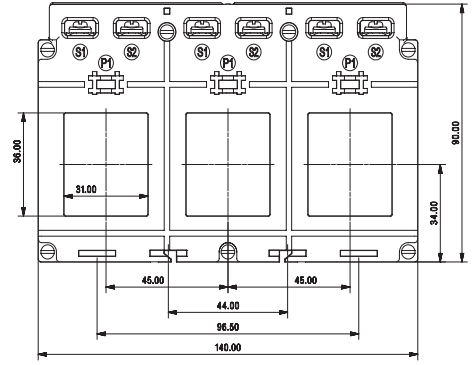
LCTP 75/15 (60)



LCTP 105/21 (40)



LCTP 140/31 (40)



3 YEAR WARRANTY

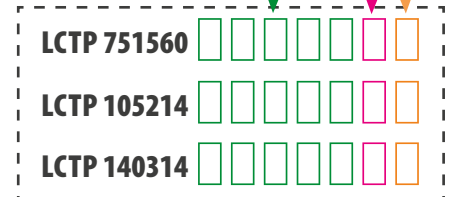
ePLAN

## ORDERING CODES

| Transformer type | LCTP 75/15 (60) |   | LCTP 105/21 (40) |   | LCTP 140/31 (40) |   |
|------------------|-----------------|---|------------------|---|------------------|---|
| Accuracy class   | 0.5             | 1 | 0.5              | 1 | 0.5              | 1 |
| Code             | 5               | 1 | 5                | 1 | 5                | 1 |

| Code  | Primary current | Transformer burden |        |        |        |        |        |
|-------|-----------------|--------------------|--------|--------|--------|--------|--------|
| 0100A | 100 A           | -                  | 1 VA   | -      | 1 VA   | -      | -      |
| 0125A | 125 A           | -                  | 1.5 VA | -      | 1.5 VA | -      | -      |
| 0150A | 150 A           | 1.5 VA             | 1.5 VA | -      | 1.5 VA | -      | -      |
| 0160A | 160 A           | 1.5 VA             | 1.5 VA | 1.5 VA | 1.5 VA | -      | -      |
| 0200A | 200 A           | -                  | -      | 1.5 VA | 1.5 VA | -      | -      |
| 0250A | 250 A           | -                  | -      | 1.5 VA | 1.5 VA | 1.5 VA | 1.5 VA |
| 0300A | 300 A           | -                  | -      | -      | -      | 2.5 VA | 2.5 VA |
| 0400A | 400 A           | -                  | -      | -      | -      | 2.5 VA | 2.5 VA |
| 0500A | 500 A           | -                  | -      | -      | -      | 2.5 VA | 2.5 VA |
| 0600A | 600 A           | -                  | -      | -      | -      | 2.5 VA | 2.5 VA |
| 0630A | 630 A           | -                  | -      | -      | -      | 2.5 VA | 2.5 VA |

| Secondary current | Code |
|-------------------|------|
| x/5A              | 5    |
| x/1A              | 1    |



Ordering example: Order code LCTP 7515600150A55 means the transformer LCTP 75/15(60) 150/5A; Class 0.5; power 1.5VA

ACCESSORIES:  
DIN rail mounting base  
Order code: LH000-0904-130-124

# LCTP - 3-PHASE BUSBAR SERIES

|                   | LCTP 185/27 (45) | LCTP 185/37 (45) |
|-------------------|------------------|------------------|
| Hole diameter     | ∅ 27 mm          | ∅ 37 mm          |
| Depth             | 45 mm            | 45 mm            |
| Width             | 185 mm           | 185 mm           |
| Primary current   | 100...500 A      | 300...800 A      |
| Secondary current | 5A; 1 A          |                  |
| Accuracy class    | 1                |                  |

INPUT:

100 A  
...  
800 A

OUTPUT:

5 A 1 A

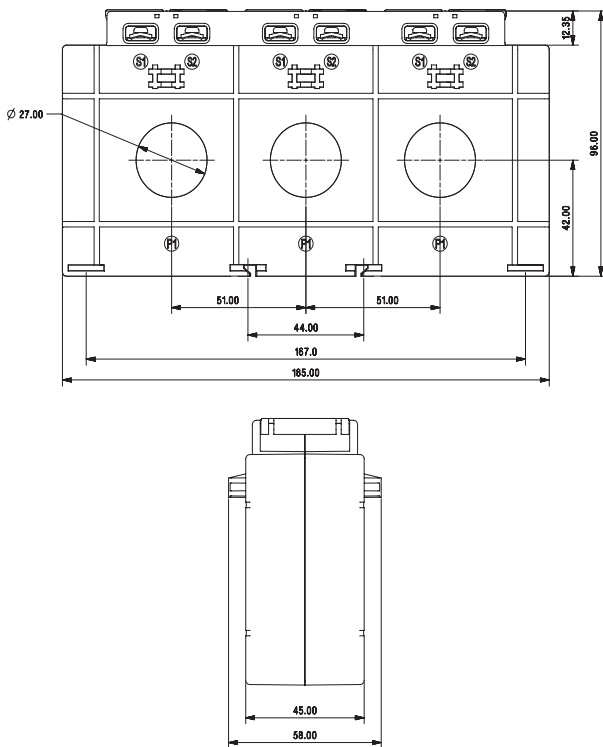


3 YEAR WARRANTY

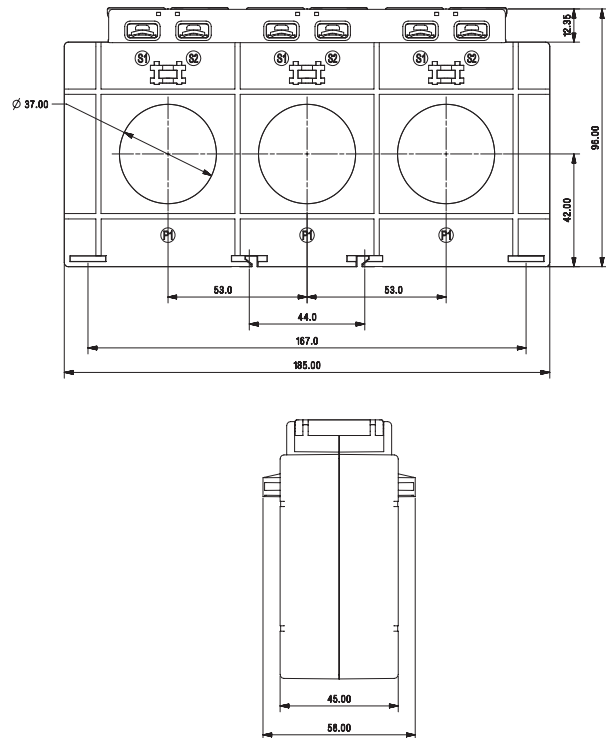
ePLAN

## DIMENSIONS

LCTP 185/27 (45)



LCTP 185/37 (45)



## ORDERING CODES

| Transformer type | LCTP 185/27 (45) | LCTP 185/37 (45) |
|------------------|------------------|------------------|
| Accuracy class   | 1                | 1                |
| Code             | 1                | 1                |

| Code  | Primary current | Transformer burden |        |
|-------|-----------------|--------------------|--------|
| 0100A | 100 A           | 1.5 VA             | -      |
| 0150A | 150 A           | 1.5 VA             | -      |
| 0200A | 200 A           | 2.5 VA             | -      |
| 0250A | 250 A           | 2.5 VA             | -      |
| 0300A | 300 A           | 5 VA               | 2.5 VA |
| 0400A | 400 A           | 5 VA               | 5 VA   |
| 0500A | 500 A           | 5 VA               | 5 VA   |
| 0600A | 600 A           | -                  | 5 VA   |
| 0800A | 800 A           | -                  | 5 VA   |

| Secondary current | Code |
|-------------------|------|
| x/5A              | 5    |
| x/1A              | 1    |

LCTP 185274

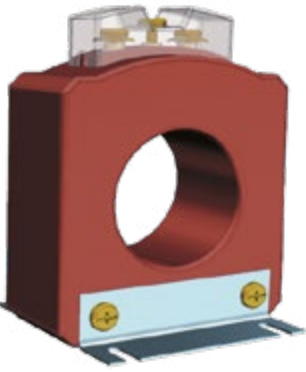
LCTP 185374

Ordering example: Order code LCTP 1852740150A51 means the transformer LCTP 185/27(45) 150/5A; Class 1; power 1.5VA

ACCESSORIES:  
DIN rail mounting base  
Order code: LH000-0904-130-124



# LRC - RESIN CAST SERIES



INPUT:

60 A  
...  
320 A

OUTPUT:

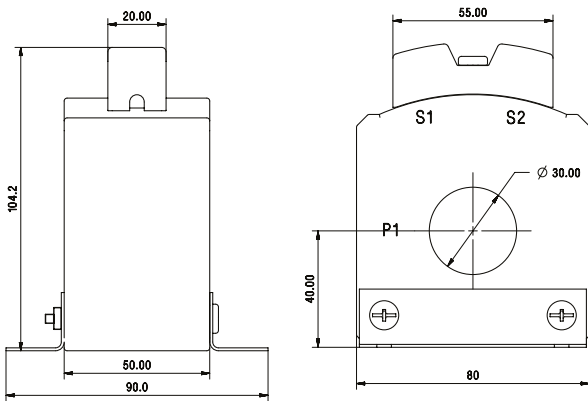
5 A 1 A



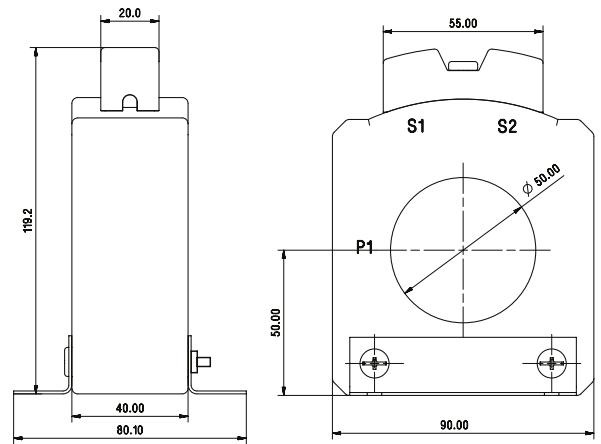
|                   | LRC1 80/30(50) | LRC2 90/50(40) |
|-------------------|----------------|----------------|
| Hole diameter     | ∅ 30 mm        | ∅ 50 mm        |
| Depth             | 50 mm          | 40 mm          |
| Width             | 80 mm          | 90 mm          |
| Primary current   | 60 A...160 A   | 200 A...320 A  |
| Secondary current | 1 A, 5 A       |                |
| Accuracy class    | 0.5, 1         |                |

## DIMENSIONS

LRC1 80/30(50)



LRC2 90/50(40)

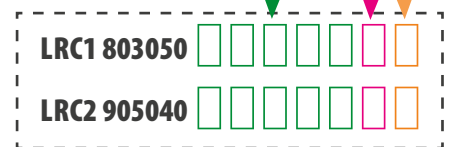


## ORDERING CODES

| Transformer type | LRC1 80/30(50) |   | LRC2 90/50(40) |   |
|------------------|----------------|---|----------------|---|
| Accuracy class   | 0.5            | 1 | 0.5            | 1 |
| Code             | 5              | 1 | 5              | 1 |

| Code  | Primary current | Transformer burden |         |       |   |
|-------|-----------------|--------------------|---------|-------|---|
| 0060A | 60 A            | -                  | 1.5 VA  | -     | - |
| 0075A | 75 A            | 2.5 VA             | 1.5 VA  | -     | - |
| 0100A | 100 A           | 2.5 VA             | 5 VA    | -     | - |
| 0125A | 125 A           | 3.75 VA            | 5 VA    | -     | - |
| 0150A | 150 A           | 3.75 VA            | 5 VA    | -     | - |
| 0160A | 160 A           | 3.75 VA            | 5 VA    | -     | - |
| 0200A | 200 A           | -                  | 3.75 VA | 5 VA  | - |
| 0250A | 250 A           | -                  | 3.75 VA | 10 VA | - |
| 0300A | 300 A           | -                  | 5 VA    | 10 VA | - |
| 0320A | 320 A           | -                  | 5 VA    | 10 VA | - |

| Secondary current | Code |
|-------------------|------|
| x/5A              | 5    |
| x/1A              | 1    |



**Ordering example:** Order code LRC1 8030500150A51 means the transformer LRC1 80/30(50) 150/5A; Class 1; power 5VA

3 YEAR WARRANTY

ePLAN

# LRC - RESIN CAST SERIES

|                   | LRC3 110/72(40) | LRC4 135/85(40) |
|-------------------|-----------------|-----------------|
| Hole diameter     | Ø 72 mm         | Ø 85 mm         |
| Depth             | 40 mm           | 40 mm           |
| Width             | 110 mm          | 135 mm          |
| Primary current   | 400 A...630 A   | 800 A...1250 A  |
| Secondary current | 1 A, 5 A        |                 |
| Accuracy class    | 0.5, 1          |                 |

INPUT:

400 A  
...  
1250 A

OUTPUTS:

5 A 1 A

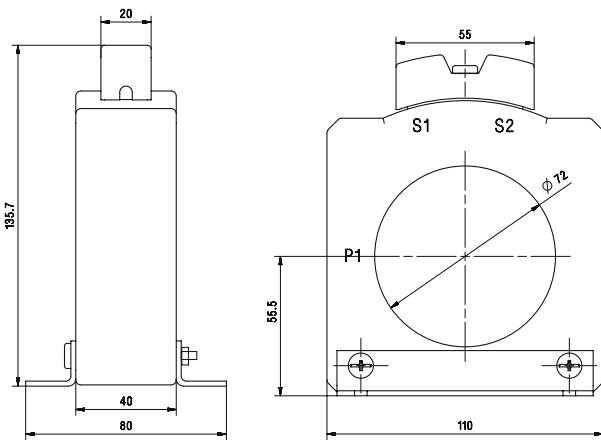


3 YEAR WARRANTY

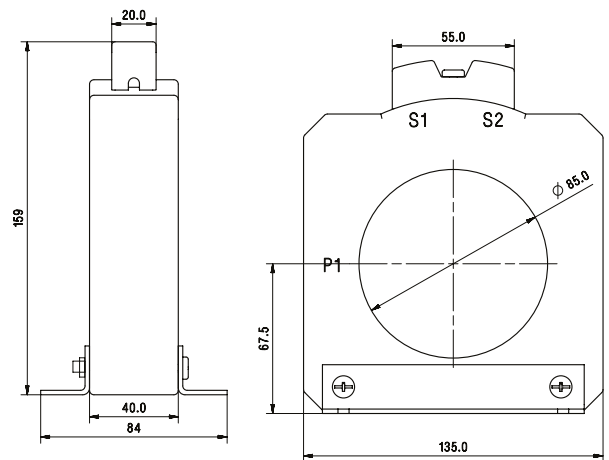
ePLAN

## DIMENSIONS

LRC3 110/72(40)



LRC4 135/85(40)



## ORDERING CODES

| Transformer type | LRC3 110/72(40) |                    | LRC4 135/85(40) |       |       |
|------------------|-----------------|--------------------|-----------------|-------|-------|
| Accuracy class   | 0.5             | 1                  | 0.5             | 1     |       |
| Code             | 5               | 1                  | 5               | 1     |       |
| Code             | Primary current | Transformer burden |                 |       |       |
| 0400A            | 400 A           | 5 VA               | 10 VA           | -     | -     |
| 0500A            | 500 A           | 7.5 VA             | 15 VA           | -     | -     |
| 0600A            | 600 A           | 15 VA              | 15 VA           | -     | -     |
| 0630A            | 630 A           | 15 VA              | 15 VA           | -     | -     |
| 0800A            | 800 A           | -                  | -               | 15 VA | 15 VA |
| 1000A            | 1000 A          | -                  | -               | 15 VA | 15 VA |
| 1200A            | 1200 A          | -                  | -               | 15 VA | 15 VA |
| 1250A            | 1250 A          | -                  | -               | 15 VA | 15 VA |

| Secondary current | Code |
|-------------------|------|
| x/5A              | 5    |
| x/1A              | 1    |

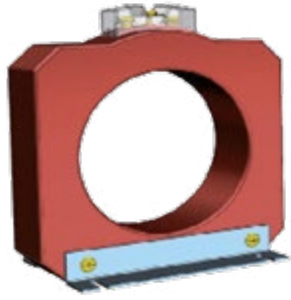
LRC3 110724

LRC4 135854

**Ordering example:** Order code LRC3 1107240500A51 means the transformer LRC3 110/72(40) 500/5A; Class 1; power 15VA

# LRC - RESIN CAST SERIES

3 YEAR WARRANTY



INPUT:

1500 A  
...  
3200 A

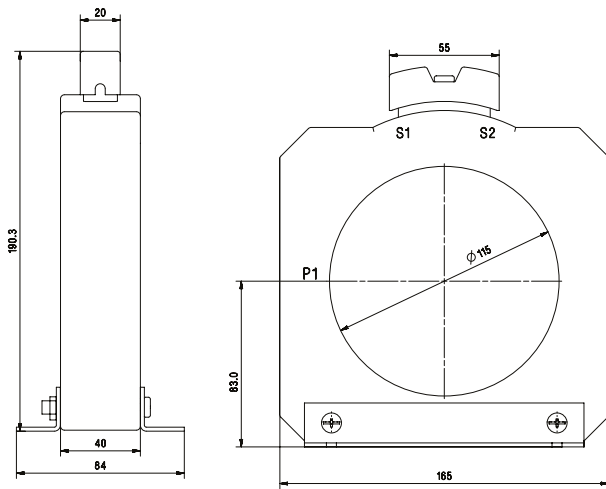
OUTPUTS:

5 A 1 A

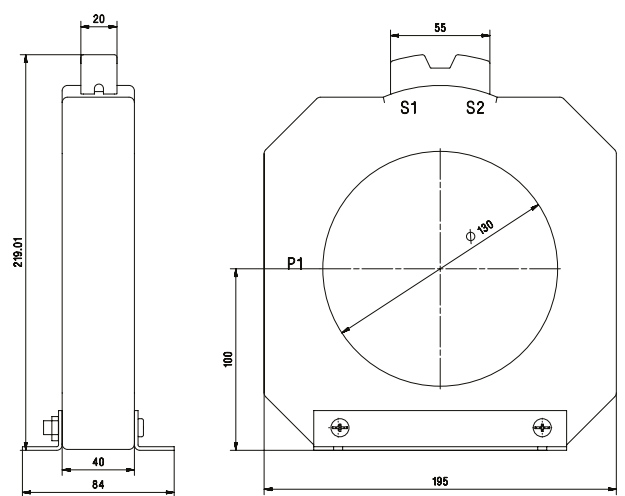
|                   | LRC5 165/115(40) | LRC6 195/130(40) |
|-------------------|------------------|------------------|
| Hole diameter     | ∅ 115 mm         | ∅ 130 mm         |
| Depth             | 40 mm            | 40 mm            |
| Width             | 165 mm           | 195 mm           |
| Primary current   | 1500 A...2000 A  | 2500 A...3200 A  |
| Secondary current | 1 A, 5 A         |                  |
| Accuracy class    | 0.5, 1           |                  |

## DIMENSIONS

LRC5 165/115(40)



LRC6 195/130(40)



## ORDERING CODES

| Transformer type | LRC5 165/115(40) |   | LRC6 195/130(40) |   |
|------------------|------------------|---|------------------|---|
| Accuracy class   | 0.5              | 1 | 0.5              | 1 |
| Code             | 5                | 1 | 5                | 1 |

| Code  | Primary current | Transformer burden |       |       |       |
|-------|-----------------|--------------------|-------|-------|-------|
| 1500A | 1500 A          | 15 VA              | 15 VA | -     | -     |
| 1600A | 1600 A          | 15 VA              | 15 VA | -     | -     |
| 2000A | 2000 A          | 15 VA              | 15 VA | -     | -     |
| 2500A | 2500 A          | -                  | -     | 15 VA | 15 VA |
| 3000A | 3000 A          | -                  | -     | 15 VA | 15 VA |
| 3200A | 3200 A          | -                  | -     | 15 VA | 15 VA |

| Secondary current | Code |
|-------------------|------|
| x/5A              | 5    |
| x/1A              | 1    |

LRC5 165115

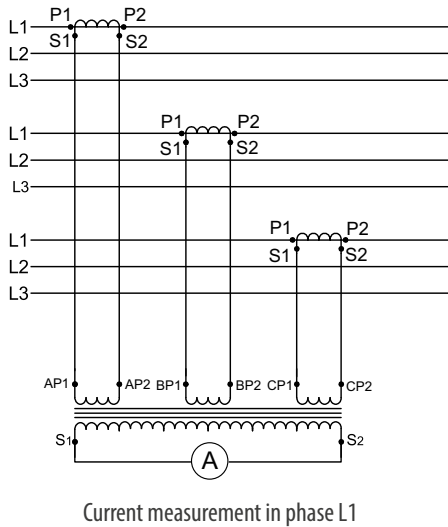
LRC6 195130

Ordering example: Order code LRC5 1651151500A51 means the transformer LRC5 165/115(40) 1500/5A; Class 1; power 15VA



# LU01 - SUMMATION CURRENT TRANSFORMERS

**SUMMATION CURRENT TRANSFORMER** are designed to summarize several synchronous alternating currents of equal phase relation with any angle of phase difference. They are used to add secondary currents of several main c.t.'s in order to measure with the CT only.



## AN EXAMPLE OF POWER SELECTION FOR MAIN TRANSFORMERS WITH DIFFERENT TRANSMISSIONS

Main Transformer ratio:

$$\begin{array}{r} 500/5A \\ 400/5A \\ \hline 300/5A \\ \hline \text{Total current} = 1200/5A \end{array}$$

Burden - 1 Ammeter

Required Active performance of the Current Transformer:

|                             |               |
|-----------------------------|---------------|
| Ammeter                     | 1.5 VA        |
| Measurement Conductor Loss  | 1.5 VA        |
| Consumption in Summation CT | 4.0 VA        |
| <b>Total VA</b>             | <b>7.0 VA</b> |

The individual main transformer must provide it's VA share from this 7.0 VA.

1. Main transformer 500/ 5A (500/ 1200) x 7 = 2.92 VA + additional losses ≈ 3.75 VA\*
2. Main transformer 400/ 5A (400/ 1200) x 7 = 2.33 VA + additional losses ≈ 2.5 VA\*
3. Main transformer 300/ 5A (300/ 1200) x 7 = 1.75 VA + additional losses ≈ 2.5 VA\*

\* The VA values of the main transformer are to be rounded up to the corresponding values in our chart.

**Note:** If using unequal main c.t.'s than ration of lowest primary main c.t. current to the highest one should not exceed 1:8.

## FEATURES:

- Available current transformers versions with 2 to 8 primary windings.
- Nickel plated secondary terminals with +/- screws.
- Multiple mounting methods, including wall mounting, DIN rail 35mm.
- Terminal protection IP10.

## GENERAL SPECIFICATION

|   |   |
|---|---|
| <b>Applicable standard:</b>                             | IEC 61869-1/2   |
| <b>Case:</b>  | self-extinguishing plastic  |
| <b>Connection:</b>                                      | Two connection on each side. M4 screws with self lifting clamp strap. |
| <b>Insulation class:</b>                                | E (max 120°C)   |
| <b>Maximum system voltage:</b>                          | 0.72 kV   |
| <b>Operating frequency:</b>                             | 50/60 Hz  |
| <b>Test voltage:</b>                                    | 3 kV, 50 Hz, 1 min  |
| <b>Rated primary rating:</b>                            | (2...8) x 5A  |
| <b>Rated secondary output:</b>                          | 5A  |
| <b>Rated burden:</b>                                    | 5; 10; 15; 20; 25 VA  |
| <b>Accuracy class:</b>                                  | 0.5; 1  |
| <b>Ambient temperature:</b>                             | -25°C ... +40°C   |
| <b>Storage temperature:</b>                             | -50°C ... +80°C   |
| <b>Thermal short circuit current (I<sub>th</sub>):</b>  | 60 x I <sub>n</sub>   |
| <b>Dynamic short circuit current (I<sub>dyn</sub>):</b> | 2,5 x I <sub>th</sub>   |
| <b>Instrument security factor (FS):</b>                 | 5,10  |

FEATURES:

720 V

Class  
0.5  
1

OUTPUTS:

5 A

3 YEAR WARRANTY

ePLAN

# LU01 - SUMMATION CURRENT TRANSFORMERS

|                   | LU01 (75)                          |
|-------------------|------------------------------------|
| Depth             | 70 mm                              |
| Width             | 75 mm                              |
| Inputs            | 2 x 1A...4 x 1A or 2 x 5A...4 x 5A |
| Secondary current | 1 A, 5 A                           |
| Accuracy class    | 0.5; 1                             |

INPUTS:

2 x 1A  
...  
4 x 1A

2 x 5A  
...  
4 x 5A

OUTPUTS:

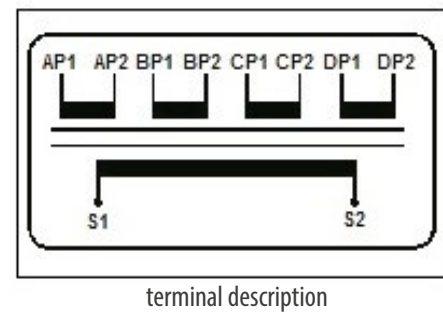
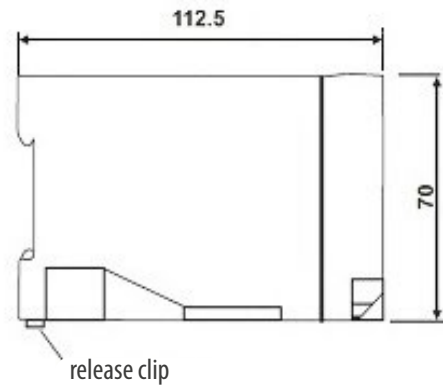
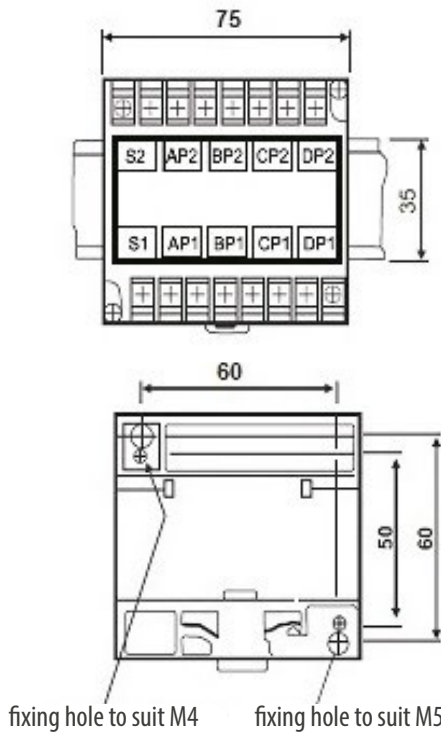
1 A

5 A



## DIMENSIONS

LU01 (75)



## ORDERING CODES

| Code | Inputs | Transformer type |       | Code |  |
|------|--------|------------------|-------|------|--|
|      |        | LU01 (75)        |       |      |  |
|      |        | Accuracy class   |       |      |  |
|      |        | 0.5              | 1     |      |  |
|      |        | Code             | 5     | 1    |  |
| 0255 | 2 x 5A | 5 VA             | 5 VA  | 08   |  |
|      |        | 10 VA            | 10 VA | 11   |  |
|      |        | 15 VA            | 15 VA | 13   |  |
|      |        | -                | 20 VA | 14   |  |
|      |        | -                | 25 VA | 17   |  |
| 0211 | 2 x 1A | 5 VA             | 5 VA  | 08   |  |
|      |        | 10 VA            | 10 VA | 11   |  |
|      |        | 15 VA            | 15 VA | 13   |  |
|      |        | -                | -     | 14   |  |
|      |        | -                | 25 VA | 17   |  |
| 0355 | 3 x 5A | 5 VA             | 5 VA  | 08   |  |
|      |        | 10 VA            | 10 VA | 11   |  |
|      |        | 15 VA            | 15 VA | 13   |  |
|      |        | -                | 20 VA | 14   |  |
|      |        | -                | 25 VA | 17   |  |
| 0311 | 3 x 1A | -                | 5 VA  | 08   |  |
|      |        | 10 VA            | -     | 11   |  |
|      |        | 15 VA            | -     | 13   |  |
| 0455 | 4 x 5A | 5 VA             | 5 VA  | 08   |  |
|      |        | 10 VA            | 10 VA | 11   |  |
|      |        | 15 VA            | 15 VA | 13   |  |
|      |        | -                | 20 VA | 14   |  |
|      |        | -                | 25 VA | 17   |  |
| 0411 | 4 x 1A | 15 VA            | -     | 13   |  |



Ordering example: Order code LU01 0255111L00000 means the summation transformer LU01 (75), INPUTS: 2x 5A, Class 1, 10 VA

3 YEAR WARRANTY

ePLAN

# LU01 - SUMMATION CURRENT TRANSFORMERS



INPUTS:

5 x 1A  
8 x 1A

5 x 5A  
8 x 5A

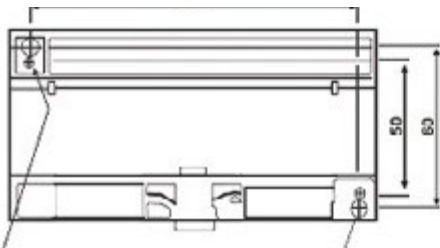
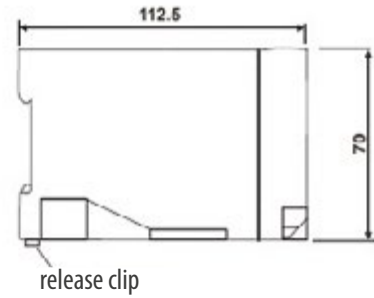
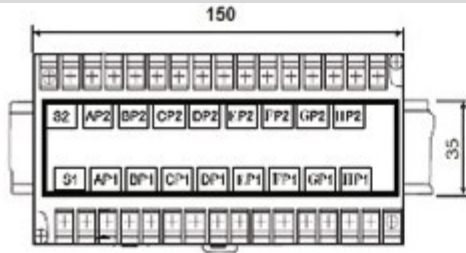
OUTPUTS:

1 A  
5 A

|                   | LU01 (150)                         |
|-------------------|------------------------------------|
| Depth             | 70 mm                              |
| Width             | 150 mm                             |
| Inputs            | 5 x 1A...8 x 1A or 5 x 5A...8 x 5A |
| Secondary current | 1 A, 5 A                           |
| Accuracy class    | 0.5; 1                             |

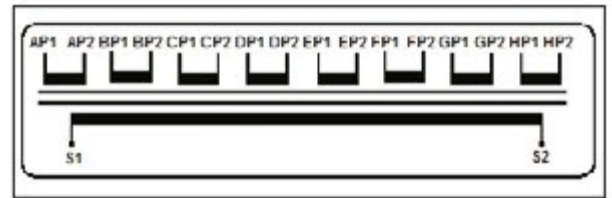
## DIMENSIONS

LU01 (150)



fixing hole to suit M4

fixing hole to suit M5



terminal description

## ORDERING CODES

| Code | Inputs | Transformer burden |       | Code |
|------|--------|--------------------|-------|------|
|      |        | 5                  | 1     |      |
| 0555 | 5 x 5A | 5 VA               | 5 VA  | 08   |
|      |        | 10 VA              | 10 VA | 11   |
|      |        | 15 VA              | 15 VA | 13   |
|      |        | -                  | 20 VA | 14   |
|      |        | -                  | 25 VA | 17   |
| 0511 | 5 x 1A | 10 VA              | 10 VA | 11   |
|      |        | 15 VA              | 15 VA | 13   |
|      |        | 15 VA              | 15 VA | 13   |
| 0655 | 6 x 5A | 5 VA               | 5 VA  | 08   |
|      |        | 10 VA              | 10 VA | 11   |
|      |        | 15 VA              | 15 VA | 13   |
|      |        | -                  | 20 VA | 14   |
|      |        | -                  | 25 VA | 17   |
| 0611 | 6 x 1A | 5 VA               | 5 VA  | 08   |
|      |        | 10 VA              | 10 VA | 11   |
|      |        | 15 VA              | 15 VA | 13   |
| 0755 | 7 x 5A | 5 VA               | 5 VA  | 08   |
|      |        | 10 VA              | 10 VA | 11   |
|      |        | 15 VA              | 15 VA | 13   |
|      |        | -                  | 20 VA | 14   |
|      |        | -                  | 25 VA | 17   |
| 0711 | 7 x 1A | 15 VA              | -     | 13   |
| 0855 | 8 x 5A | 5 VA               | 5 VA  | 08   |
|      |        | 10 VA              | 10 VA | 11   |
|      |        | 15 VA              | 15 VA | 13   |
|      |        | -                  | 20 VA | 14   |
|      |        | -                  | 25 VA | 17   |
| 0811 | 8 x 1A | 15 VA              | 15 VA | 13   |



Ordering example: Order code LU01 0555111L00000 means the summation transformer LU01 (150), INPUTS: 5x 5A, Class 1, 10 VA

3 YEAR WARRANTY





# LW - ROUND CURRENT TRANSFORMERS

|                   | LW01         | LW02              |
|-------------------|--------------|-------------------|
| Hole diameter     | ∅ 30 mm      | ∅ 30 mm           |
| Depth             | 40 mm        | 50 mm             |
| Outer diameter    | ∅ 73 mm      | ∅ 73 mm           |
| Primary current   | 50 A...200 A | 50 A...200 A      |
| Secondary current | 1 A, 5 A     |                   |
| Accuracy class    | 0.5; 1       | 0.2; 0.5S; 0.5; 1 |

INPUT:

50 A  
...  
200 A

OUTPUTS:

5 A 1 A

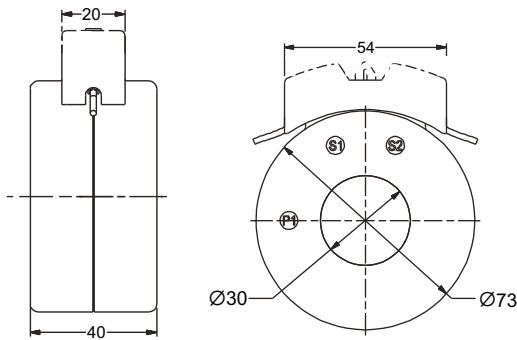


3 YEAR WARRANTY

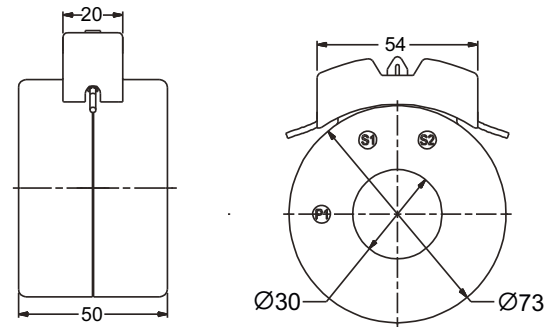
ePLAN

## DIMENSIONS

LW01



LW02



## ORDERING CODES

| Code | Rated primary current | LW01   |     | LW02    |      |        |     |        |      |        |     |        |     |
|------|-----------------------|--------|-----|---------|------|--------|-----|--------|------|--------|-----|--------|-----|
|      |                       | 0.5    | 1   | 0.2     | 0.5S | 0.5    | 1   | 0.2    | 0.5S | 0.5    | 1   |        |     |
| 13   | 50 A                  | -      | -   | 1.5 VA  | 031  | -      | -   | -      | -    | -      | -   | 1.5 VA | 031 |
| 14   | 60 A                  | -      | -   | 1.5 VA  | 031  | -      | -   | -      | -    | -      | -   | 1.5 VA | 031 |
| 16   | 75 A                  | -      | -   | 1.5 VA  | 031  | -      | -   | -      | -    | 1.5 VA | 035 | 2.5 VA | 051 |
| 18   | 100A                  | 1.5 VA | 035 | 2.5 VA  | 051  | -      | -   | -      | -    | 2.5 VA | 055 | 5 VA   | 081 |
| 19   | 120A                  | 1.5 VA | 035 | 2.5 VA  | 051  | -      | -   | -      | -    | 2.5 VA | 055 | 5 VA   | 081 |
| 20   | 125 A                 | 2.5 VA | 055 | 3.75 VA | 071  | -      | -   | -      | -    | 2.5 VA | 055 | 5 VA   | 081 |
| 22   | 150 A                 | 2.5 VA | 055 | 5 VA    | 081  | -      | -   | 2.5 VA | 056  | 5 VA   | 085 | 10 VA  | 111 |
| 24   | 200 A                 | 5 VA   | 085 | 10 VA   | 111  | 2.5 VA | 052 | 5 VA   | 086  | 10 VA  | 115 | 15 VA  | 131 |

| Transformer type | Code |
|------------------|------|
| LW01             | 01   |
| LW02             | 02   |

| Secondary current | Code |
|-------------------|------|
| x/5A              | 5    |
| x/1A              | 1    |

Code: LW [ ] [ ] [ ] [ ] [ ] [ ] [ ] [ ] L000000

Ordering example: Order code LW 01185035L000000 means the transformer LW01 100/5A; Class 0,5; power 1.5VA

# LW - ROUND CURRENT TRANSFORMERS



INPUT:

75 A  
...  
600 A

OUTPUTS:

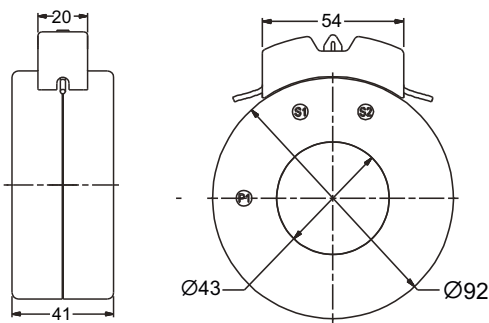
5 A 1 A



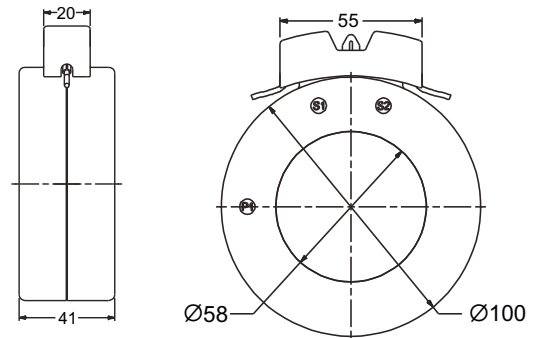
|                   | LW03              | LW04          |
|-------------------|-------------------|---------------|
| Hole diameter     | ∅ 43 mm           | ∅ 58 mm       |
| Depth             | 41 mm             | 41 mm         |
| Outer diameter    | ∅ 92 mm           | ∅ 100 mm      |
| Primary current   | 75 A...300 A      | 120 A...600 A |
| Secondary current | 1 A, 5 A          |               |
| Accuracy class    | 0.2; 0.5S; 0.5; 1 |               |

## DIMENSIONS

LW03



LW04



## ORDERING CODES

| Code | Transformer type | Rated primary current | LW03               |        |     |        | LW04   |         |     |        |     |         |     |        |        |        |     |
|------|------------------|-----------------------|--------------------|--------|-----|--------|--------|---------|-----|--------|-----|---------|-----|--------|--------|--------|-----|
|      |                  |                       | 0.2                | 0.5S   | 0.5 | 1      | 0.2    | 0.5S    | 0.5 | 1      |     |         |     |        |        |        |     |
|      |                  |                       | Transformer burden |        |     |        |        |         |     |        |     |         |     |        |        |        |     |
| 16   | 75 A             | -                     | -                  | -      | -   | -      | 1 VA   | 011     | -   | -      | -   | -       | -   | -      | -      | -      |     |
| 17   | 80 A             | -                     | -                  | -      | -   | -      | 1.5 VA | 031     | -   | -      | -   | -       | -   | -      | -      | -      |     |
| 18   | 100A             | -                     | -                  | -      | -   | 1 VA   | 015    | 2.5 VA  | 051 | -      | -   | -       | -   | -      | -      | -      |     |
| 19   | 120A             | -                     | -                  | -      | -   | 1 VA   | 015    | 2.5 VA  | 051 | -      | -   | -       | -   | -      | 1 VA   | 011    |     |
| 20   | 125 A            | -                     | -                  | -      | -   | 1 VA   | 015    | 2.5 VA  | 051 | -      | -   | -       | -   | -      | 1.5 VA | 031    |     |
| 22   | 150 A            | -                     | -                  | -      | -   | 1.5 VA | 035    | 3.75 VA | 071 | -      | -   | -       | -   | 1 VA   | 015    | 2.5 VA | 051 |
| 24   | 200 A            | 1.5 VA                | 032                | 5 VA   | 086 | 5 VA   | 085    | 10 VA   | 111 | -      | -   | 1.5 VA  | 036 | 2.5 VA | 055    | 5 VA   | 081 |
| 27   | 250 A            | 2.5 VA                | 052                | 7.5 VA | 106 | 7.5 VA | 105    | 15 VA   | 131 | -      | -   | 2.5 VA  | 056 | 3.75   | 075    | 7.5 VA | 101 |
| 28   | 300 A            | 3.75 VA               | 072                | 10 VA  | 116 | 10 VA  | 115    | 20 VA   | 141 | -      | -   | 3.75 VA | 076 | 5 VA   | 085    | 10 VA  | 111 |
| 31   | 400 A            | -                     | -                  | -      | -   | -      | -      | -       | -   | 5 VA   | 082 | 7.5 VA  | 106 | 10 VA  | 115    | 20 VA  | 141 |
| 32   | 500 A            | -                     | -                  | -      | -   | -      | -      | -       | -   | 7.5 VA | 102 | 10 VA   | 116 | 15 VA  | 135    | 25 VA  | 201 |
| 33   | 600 A            | -                     | -                  | -      | -   | -      | -      | -       | -   | 10 VA  | 112 | 15 VA   | 136 | 15 VA  | 135    | 25 VA  | 201 |

Code

LW                      L000000

| Transformer type | Code |
|------------------|------|
| LW03             | 03   |
| LW04             | 04   |

| Secondary current | Code |
|-------------------|------|
| x/5A              | 5    |
| x/1A              | 1    |

Ordering example: Order code LW 03185015L000000 means the transformer LW03 100/5A; Class 0.5; power 1VA



# LW - ROUND CURRENT TRANSFORMERS

|                   | LW05              | LW06           |
|-------------------|-------------------|----------------|
| Hole diameter     | Ø 72 mm           | Ø 113 mm       |
| Depth             | 41 mm             | 40 mm          |
| Outer diameter    | Ø 110 mm          | Ø 159 mm       |
| Primary current   | 200 A...1000 A    | 600 A...3200 A |
| Secondary current | 1 A, 5 A          |                |
| Accuracy class    | 0.2; 0.5S; 0.5; 1 |                |

INPUT:

200 A  
...  
3200 A

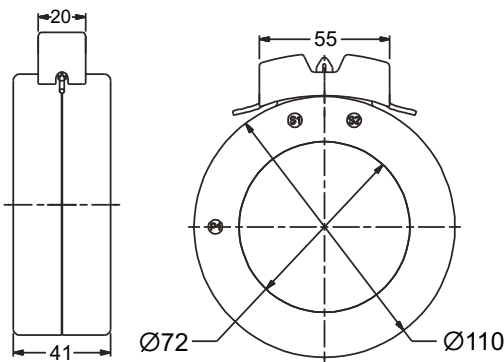
OUTPUTS:

5 A 1 A

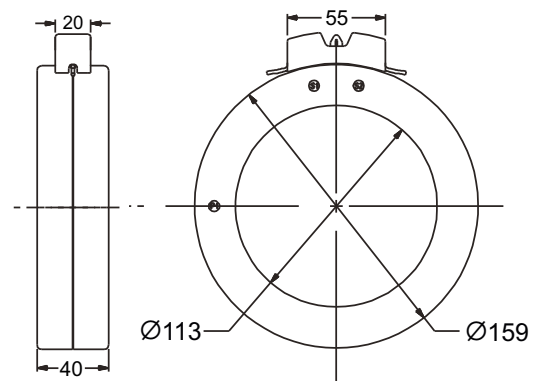


## DIMENSIONS

LW05



LW06



3 YEAR WARRANTY

ePLAN

## ORDERING CODES

| Code | Rated primary current | LW05    |      |        |        | LW06   |        |         |     |         |     |         |     |       |     |       |     |
|------|-----------------------|---------|------|--------|--------|--------|--------|---------|-----|---------|-----|---------|-----|-------|-----|-------|-----|
|      |                       | 0.2     | 0.5S | 0.5    | 1      | 0.2    | 0.5S   | 0.5     | 1   |         |     |         |     |       |     |       |     |
| 24   | 200 A                 | -       | -    | -      | 1.5 VA | 031    | -      | -       | -   | -       | -   | -       | -   | -     | -   | -     | -   |
| 27   | 250 A                 | -       | -    | -      | 1.5 VA | 035    | 2.5 VA | 051     | -   | -       | -   | -       | -   | -     | -   | -     | -   |
| 28   | 300 A                 | -       | -    | -      | 2.5 VA | 055    | 5 VA   | 081     | -   | -       | -   | -       | -   | -     | -   | -     | -   |
| 31   | 400 A                 | 2.5 VA  | 052  | 5 VA   | 086    | 7.5 VA | 105    | 12.5 VA | 121 | -       | -   | -       | -   | -     | -   | -     | -   |
| 32   | 500 A                 | 3.75 VA | 072  | 7.5 VA | 106    | 10 VA  | 115    | 15 VA   | 131 | -       | -   | -       | -   | -     | -   | -     | -   |
| 33   | 600 A                 | 5 VA    | 082  | 7.5 VA | 106    | 10 VA  | 115    | 15 VA   | 131 | 1.5 VA  | 032 | 3.75 VA | 076 | 5 VA  | 085 | 10 VA | 111 |
| 37   | 800 A                 | 10 VA   | 112  | 15 VA  | 136    | 15 VA  | 135    | 30 VA   | 151 | 2.5 VA  | 052 | 7.5 VA  | 106 | 10 VA | 115 | 15 VA | 131 |
| 39   | 1000 A                | 10 VA   | 112  | 15 VA  | 136    | 15 VA  | 135    | 30 VA   | 151 | 3.75 VA | 072 | 7.5 VA  | 106 | 10 VA | 115 | 15 VA | 131 |
| 40   | 1200 A                | -       | -    | -      | -      | -      | -      | -       | -   | 15 VA   | 132 | 15 VA   | 136 | 20 VA | 145 | 30 VA | 151 |
| 41   | 1250 A                | -       | -    | -      | -      | -      | -      | -       | -   | 15 VA   | 132 | 15 VA   | 136 | 20 VA | 145 | 30 VA | 151 |
| 42   | 1500 A                | -       | -    | -      | -      | -      | -      | -       | -   | 15 VA   | 132 | 15 VA   | 136 | 20 VA | 145 | 30 VA | 151 |
| 43   | 1600 A                | -       | -    | -      | -      | -      | -      | -       | -   | 15 VA   | 132 | 15 VA   | 136 | 20 VA | 145 | 30 VA | 151 |
| 44   | 2000 A                | -       | -    | -      | -      | -      | -      | -       | -   | 15 VA   | 132 | 20 VA   | 146 | 25 VA | 205 | 45 VA | 161 |
| 46   | 2500 A                | -       | -    | -      | -      | -      | -      | -       | -   | 15 VA   | 132 | 20 VA   | 146 | 25 VA | 205 | 45 VA | 161 |
| 48   | 3000 A                | -       | -    | -      | -      | -      | -      | -       | -   | 15 VA   | 132 | 25 VA   | 206 | 30 VA | 155 | 45 VA | 161 |
| 49   | 3200 A                | -       | -    | -      | -      | -      | -      | -       | -   | 15 VA   | 132 | 25 VA   | 206 | 30 VA | 155 | 45 VA | 161 |

Code

LW                L000000

| Transformer type | Code |
|------------------|------|
| LW05             | 05   |
| LW06             | 06   |

| Secondary current | Code |
|-------------------|------|
| x/5A              | 5    |
| x/1A              | 1    |

Ordering example: Order code LW 05285055L000000 means the transformer LW05 300/5A; Class 0.5; power 2.5VA

# LE - ROUND CURRENT TRANSFORMERS



INPUT:

50 A  
...  
600 A

OUTPUTS:

5 A 1 A



|                   | LE 73/30 (50) | LE 92/43 (41) | LE 95/50 (40) | LE 100/58 (41) |
|-------------------|---------------|---------------|---------------|----------------|
| Hole diameter     | ∅ 30 mm       | ∅ 43 mm       | ∅ 50 mm       | ∅ 58 mm        |
| Depth             | 50 mm         | 41 mm         | 40 mm         | 41 mm          |
| Outer diameter    | ∅ 73 mm       | ∅ 92 mm       | ∅ 95 mm       | ∅ 100 mm       |
| Primary current   | 50 A...200 A  | 200 A...400 A | 200 A...300 A | 400 A...600 A  |
| Secondary current | 1 A, 5 A      |               |               |                |
| Accuracy class    | 1; 5          | 1             |               |                |

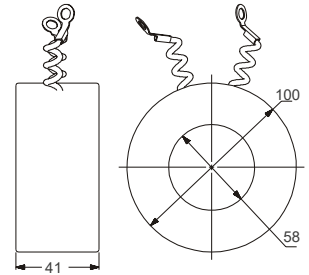
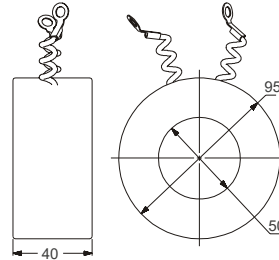
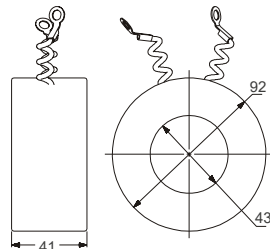
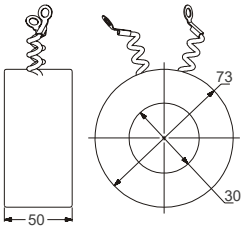
## DIMENSIONS

LE 73/30 (50)

LE 92/43 (41)

LE 95/50 (40)

LE 100/58 (41)



## ORDERING CODES

| Code | Rated primary current | LE 73/30 (50) |     | LE 92/43 (41) |     |      |     | LE 95/50 (40) |     |       |     | LE 100/58 (41) |     |      |     |       |     |       |     |       |     |
|------|-----------------------|---------------|-----|---------------|-----|------|-----|---------------|-----|-------|-----|----------------|-----|------|-----|-------|-----|-------|-----|-------|-----|
|      |                       | 1             | 5   | 1             | 5   | 1    | 5   | 1             | 5   | 1     | 5   | 1              | 5   |      |     |       |     |       |     |       |     |
| 13   | 50 A                  | -             | -   | -             | -   | 5 VA | 087 | -             | -   | -     | -   | -              | -   | -    | -   | -     | -   | -     |     |       |     |
| 14   | 60 A                  | -             | -   | -             | -   | 5 VA | 087 | -             | -   | -     | -   | -              | -   | -    | -   | -     | -   | -     |     |       |     |
| 16   | 75 A                  | -             | -   | -             | -   | 5 VA | 087 | -             | -   | -     | -   | -              | -   | -    | -   | -     | -   | -     |     |       |     |
| 18   | 100 A                 | 5 VA          | 081 | -             | -   | -    | -   | -             | -   | -     | -   | -              | -   | -    | -   | -     | -   | -     |     |       |     |
| 22   | 150 A                 | 5 VA          | 081 | -             | -   | -    | -   | -             | -   | -     | -   | -              | -   | -    | -   | -     | -   | -     |     |       |     |
| 24   | 200 A                 | 5 VA          | 081 | 15            | 131 | -    | -   | 5 VA          | 081 | 10 VA | 111 | 15 VA          | 131 | 5 VA | 081 | 10 VA | 111 | 15 VA | 131 |       |     |
| 27   | 250 A                 | -             | -   | -             | -   | -    | -   | 5 VA          | 081 | 10 VA | 111 | 15 VA          | 131 | 5 VA | 081 | 10 VA | 111 | 15 VA | 131 |       |     |
| 28   | 300 A                 | -             | -   | -             | -   | -    | -   | 5 VA          | 081 | 10 VA | 111 | 15 VA          | 131 | 5 VA | 081 | 10 VA | 111 | 15 VA | 131 |       |     |
| 31   | 400 A                 | -             | -   | -             | -   | -    | -   | 5 VA          | 081 | -     | -   | 15 VA          | 131 | -    | -   | -     | -   | 5 VA  | 081 | 15 VA | 131 |
| 32   | 500 A                 | -             | -   | -             | -   | -    | -   | -             | -   | -     | -   | -              | -   | -    | -   | -     | -   | 5 VA  | 081 | 15 VA | 131 |
| 33   | 600 A                 | -             | -   | -             | -   | -    | -   | -             | -   | -     | -   | -              | -   | -    | -   | -     | -   | 5 VA  | 081 | 15 VA | 131 |

Code

LE [ ] [ ] [ ] [ ] [ ] [ ] [ ] L000000

| Transformer type | Code |
|------------------|------|
| LE 73/30 (50)    | 01   |
| LE 92/43 (41)    | 03   |
| LE 95/50 (40)    | 04   |
| LE 100/58 (41)   | 05   |

| Secondary current | Code |
|-------------------|------|
| x/5A              | 5    |
| x/1A              | 1    |

Ordering example: Order code LE 01185081L000000 means the transformer LE 73/30(50) 100/5A; Class 1; power 5VA



# LE - ROUND CURRENT TRANSFORMERS

|                   | LE 110/72 (41) | LE 135/85 (30) | LE 159/113 (40) | LE 165/130 (30) |
|-------------------|----------------|----------------|-----------------|-----------------|
| Hole diameter     | Ø 72 mm        | Ø 85 mm        | Ø 113 mm        | Ø 130 mm        |
| Depth             | 41 mm          | 30 mm          | 40 mm           | 30 mm           |
| Outer diameter    | Ø 110 mm       | Ø 135 mm       | Ø 159 mm        | Ø 165 mm        |
| Primary current   | 800 A...1000 A | 800 A...1200 A | 1200 A...2000 A | 2400 A...5000 A |
| Secondary current | 1 A, 5 A       |                |                 |                 |
| Accuracy class    | 1              |                |                 |                 |

INPUT:

800 A  
...  
5000 A

OUTPUTS:

5 A 1 A

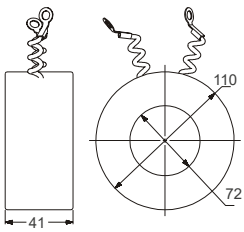


3 YEAR WARRANTY

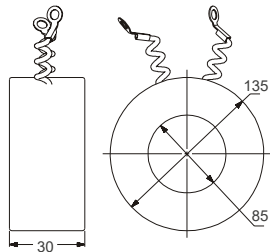
ePLAN

## DIMENSIONS

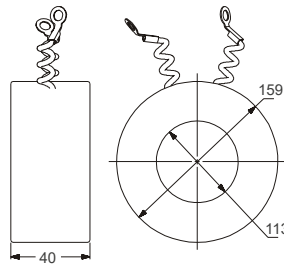
LE 110/72 (41)



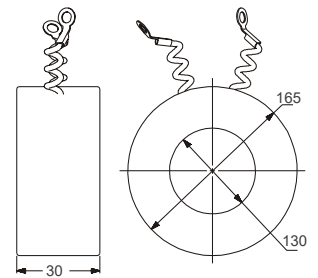
LE 135/85 (30)



LE 159/113 (40)



LE 165/130 (30)



## ORDERING CODES

| Transformer type | LE 110/72 (41)        | LE 135/85 (30)     | LE 159/113 (40) | LE 165/130 (30) |     |      |     |       |     |       |     |       |     |
|------------------|-----------------------|--------------------|-----------------|-----------------|-----|------|-----|-------|-----|-------|-----|-------|-----|
| Accuracy class   | 1                     | 1                  | 1               | 1               |     |      |     |       |     |       |     |       |     |
| Code             | Rated primary current | Transformer burden |                 |                 |     |      |     |       |     |       |     |       |     |
| 37               | 800 A                 | 5 VA               | 081             | 15 VA           | 131 | 5 VA | 081 | 15 VA | 131 | -     | -   | -     | -   |
| 39               | 1000 A                | 5 VA               | 081             | 15 VA           | 131 | 5 VA | 081 | 15 VA | 131 | -     | -   | -     | -   |
| 40               | 1200 A                | -                  | -               | -               | -   | -    | -   | 15 VA | 131 | 15 VA | 131 | -     | -   |
| 42               | 1500 A                | -                  | -               | -               | -   | -    | -   | -     | -   | 15 VA | 131 | -     | -   |
| 43               | 1600 A                | -                  | -               | -               | -   | -    | -   | -     | -   | 15 VA | 131 | -     | -   |
| 44               | 2000 A                | -                  | -               | -               | -   | -    | -   | -     | -   | 15 VA | 131 | -     | -   |
| 45               | 2400 A                | -                  | -               | -               | -   | -    | -   | -     | -   | -     | -   | 15 VA | 131 |
| 46               | 2500 A                | -                  | -               | -               | -   | -    | -   | -     | -   | -     | -   | 15 VA | 131 |
| 48               | 3000 A                | -                  | -               | -               | -   | -    | -   | -     | -   | -     | -   | 15 VA | 131 |
| 51               | 4000 A                | -                  | -               | -               | -   | -    | -   | -     | -   | -     | -   | 15 VA | 131 |
| 52               | 5000 A                | -                  | -               | -               | -   | -    | -   | -     | -   | -     | -   | 15 VA | 131 |

Code

LE [ ] [ ] [ ] [ ] [ ] [ ] L000000

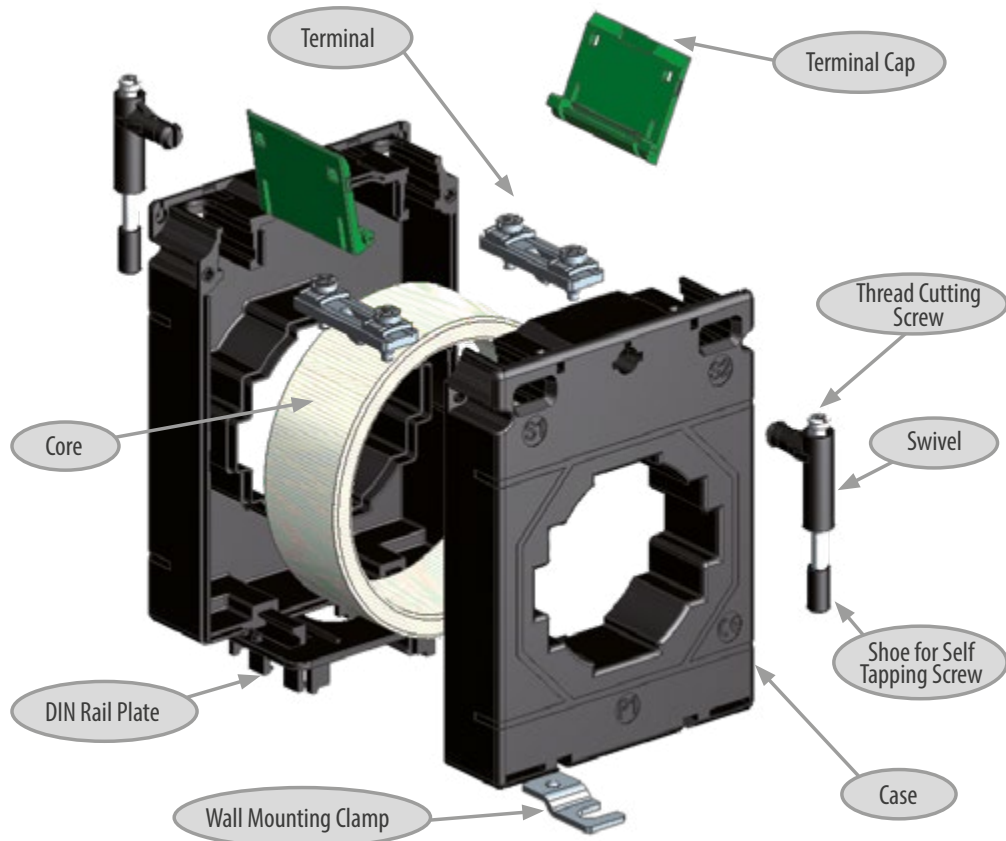
| Transformer type | Code |
|------------------|------|
| LE 110/72 (41)   | 06   |
| LE 135/85 (30)   | 07   |
| LE 159/113 (41)  | 08   |
| LE 165/130 (30)  | 09   |

| Secondary current | Code |
|-------------------|------|
| x/5A              | 5    |
| x/1A              | 1    |

Ordering example: Order code LE 06395081L000000 means the transformer LE 110/72(41) 1000/5A; Class 1; power 5VA

# ACCESSORIES

3 YEAR WARRANTY  
ePLAN



## DIN rail mounting base:

(additional accessories - have to be order separately)

| Order code  | Transformer type  | View |
|---|---|------|
| LH000-0904-130-123  | LCTR 50/xx (30)<br>LCTB 50/xx (30)                                      |      |
| LH000-0904-130-002  | LCTR 45, LCTB 45  |      |
| LH000-0904-130-124  | LCTM<br>LCTR 62,<br>LCTB 62,<br>LCTB 74, LCTB 86,<br>LCTB 104,<br>LCTP  |      |
| LH000-0904-130-128<br>(for vertical or horizontal mounting) | LCTM,<br>LCTR 62,<br>LCTB 62,<br>LCTB 74, LCTB 86,<br>LCTB 104,<br>LCTP |      |

| Accessories                             |                                    |  |
|---|------------------------------------|--|
| Description                             | View                               |  |
| Thread cutting screw<br>4 x 35mm        |                                    |  |
| Thread cutting screw<br>4 x 45mm        |                                    |  |
| Thread cutting screw<br>4 x 75mm        |                                    |  |
| Wall mounting clamp                     |                                    |  |
| Swivel                                  |                                    |  |
| Shoe for self tapping<br>M4 screw       |                                    |  |
| (only for transformers<br>of LCTS type) | Nut of M4 screw                    |  |
|   | Locking pin                        |  |
|   | Thread cutting screw<br>M4 x 45 mm |  |

## Busbar mounting kit:

(delivered with each current transformer)

| Kit order code     | Description                     | No of pcs. | Transformer type                                |
|--------------------|---------------------------------|------------|---|
| LH000-0904-130-140 | Wall mounting clamp             | 2          | LCTR 45, LCTB 45, LCTM 62W, LCTM 74W            |
| LH000-0904-130-141 | Thread cutting screw 4 x 35mm   | 2          | LCTR 50, LCTB 50                                |
|                    | Wall mounting clamp             | 2          |   |
|                    | Swivel                          | 2          |   |
|                    | Shoe for self tapping M4 screw  | 2          |   |
| LH000-0904-130-142 | Thread cutting screw 4 x 45mm   | 2          | LCTR 62, LCTB 62,<br>LCTB 74, LCTB 86           |
|                    | Wall mounting clamp             | 2          |   |
|                    | Swivel                          | 2          |   |
| LH000-0904-130-147 | Thread cutting screw 4 x 35mm   | 6          | LCTB 100/100 V,<br>LCTB 100/130 V               |
|                    | Wall mounting clamp             | 2          |   |
|                    | Shoe for self tapping M4 screw  | 6          |   |
| LH000-0904-130-143 | Thread cutting screw 4 x 45mm   | 4          | LCTB 104  |
|                    | Wall mounting clamp             | 2          |   |
|                    | Swivel                          | 4          |   |
|                    | Shoe for self tapping M4 screw  | 4          |   |
| LH000-0904-130-144 | Thread cutting screw 4 x 75mm   | 4          | LCTB 140/80,<br>LCTB 140/100H,<br>LCTB 140/100V |
|                    | Wall mounting clamp             | 2          |   |
|                    | Swivel                          | 4          |   |
|                    | Shoe for self tapping M4 screw  | 4          |   |
| LH000-0904-130-145 | Thread cutting screw 4 x 75mm   | 1          | LCTB 140/130 V                                  |
|                    | Thread cutting screw 4 x 45mm   | 5          |   |
|                    | Wall mounting clamp             | 2          |   |
|                    | Shoe for self tapping M4 screw  | 6          |   |
| LH000-0904-130-146 | Thread cutting screw 4 x 75mm   | 6          | LCTB 225  |
|                    | Wall mounting clamp             | 2          |   |
|                    | Shoe for self tapping M4 screw  | 6          |   |
| LH000-0904-130-623 | Thread cutting screw M4 x 45mm  | 4          | LCTS 93/30SC                                    |
|                    | Wall mounting clamp             | 2          |   |
|                    | Shoe for self tapping M4 screw  | 4          |   |
|                    | Locking pin                     | 1          |   |
|                    | Nut of M4 screw                 | 4          |   |
| LH000-0904-130-624 | Thread cutting screw M4 x 45 mm | 6          | LCTS 125/50SC                                   |
|                    | Wall mounting clamp             | 2          |   |
|                    | Shoe for self tapping M4 screw  | 6          |   |
|                    | Locking pin                     | 1          |   |
|                    | Nut of M4 screw                 | 6          |   |
| LH000-0904-130-625 | Thread cutting screw M4 x 45 mm | 8          | LCTS 155/80SC                                   |
|                    | Wall mounting clamp             | 2          |   |
|                    | Shoe for self tapping M4 screw  | 8          |   |
|                    | Locking pin                     | 1          |   |
|                    | Nut of M4 screw                 | 8          |   |

3  
YEAR  
WARRANTY

ePLAN





# LUMEL

LUMEL has been known, since 1954, all over the world, as a manufacturer of top quality industrial automation devices. In 2020, international reports listed Lumel as one of the world's leaders in the production of electrical quantity transducers, network parameter analyzers and analog meters.

Lumel offers consists of product categories, such as:

- ▶ Network parameter meters and analyzers
- ▶ Electrical and non-electrical quantity transducers
- ▶ Digital meters
- ▶ Recorders and data loggers
- ▶ Controllers
- ▶ Analog meters
- ▶ Current transformers
- ▶ Shunts

Depending on the needs of the customer, the automation products and systems our offer relay on various data communication protocols (MODBUS, ETHERNET, PROFINET, BACNET or MQTT).

Apart from the products, Lumel specializes in complex systems used for:

- ▶ monitoring and optimizing the cost of electricity and other utilities (water, gas, compressed air)
- ▶ monitoring environmental parameters: temperature, humidity, light intensity, CO<sub>2</sub>, volatile gases
- ▶ solar energy

In addition to its manufacturing activity, Lumel offers also:

- ▶ OEM services in the scope of housing designing, electronics, mechanics, hardware and software. All under one roof.
- ▶ EMS services
- ▶ ODM services

We are a member of an international capital group which consists of the following companies: LUMEL S.A., LUMEL ALUCAST Sp. z o.o., Rishabh Instruments Pvt. Ltd., Sifam Tinsley US, Sifam Tinsley UK.

MAY 2023

## LUMEL S.A.

ul. Stubicka 4  
65-127 Zielona Góra, Poland  
tel.: 68 45 75 100,  
fax. 68 45 75 508  
[www.lumel.com.pl](http://www.lumel.com.pl)

## EXPORT DEPARTMENT:

☎ + 48 68 45 75 130 or + 48 693 290 962  
✉ [export@lumel.com.pl](mailto:export@lumel.com.pl)

## CUSTOMER SERVICE:

☎ + 48 68 45 75 151  
☎ + 48 68 45 75 152  
☎ + 48 68 45 75 153  
☎ + 48 68 45 75 154